

BBVA-2 FTPYME-ICO Fondo de Titulización de Activos

Cartera de Activos Titulizados / Portfolio of Securitized Assets

Análisis de morosidad: Tasa de recuperación de mora 18 meses* (años desde entrada en mora*) - Detalle por trimestres de entrada en mora**

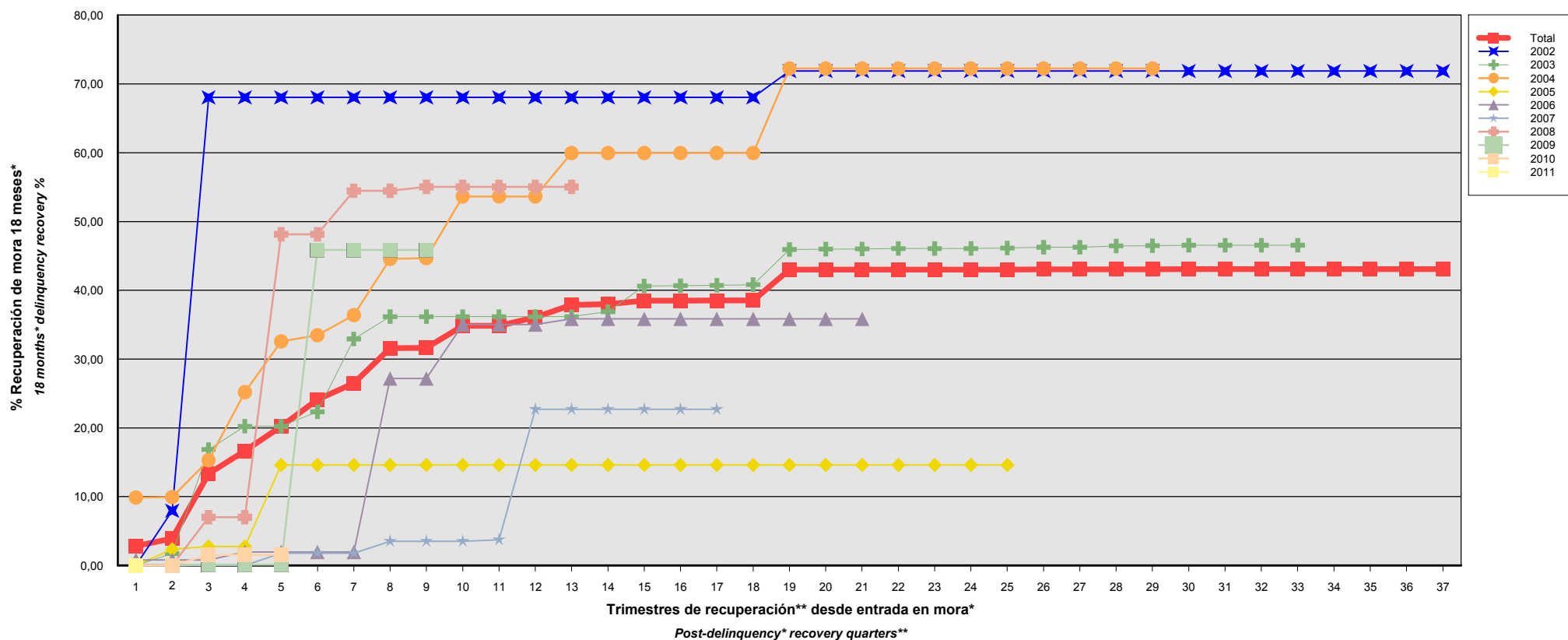
Delinquency analysis: 18 months* delinquency recovery rate (years after delinquency* occurs) - Detailed by quarters of occurrence**

Activos / Assets: Préstamos a PYMES / SME Loans

Fecha / Date: 31/03/2011

Divisa / Currency: EUR

Esta serie histórica calculada a esta fecha puede diferir de las series históricas calculadas con anterioridad a consecuencia de cobros de los activos titulizados comunicados o modificados por el Administrador correspondiente con posterioridad a sus fechas de efectividad / This historical series calculated as at today's date may differ from previously calculated historical series following collections of the securitized assets communicated or modified by the relevant Servicer after their effective dates



*Incluye en su caso los activos titulizados clasificados como dudosos/fallidos por duda razonable sobre reembolso total
 *Includes securitized assets, if any, classified as doubtful or bad debts because there are reasonable doubts as to full repayment

**Sólo se muestran datos de periodos en los que hay entradas en mora analizada
 **Details are only given for periods in which analysed delinquencies occur

BBVA-2 FTPYME-ICO Fondo de Titulización de Activos

Cartera de Activos Titulizados / Portfolio of Securitized Assets

Análisis de morosidad: Tasa de recuperación de mora 18 meses* (años desde entrada en mora*) - Detalle por trimestres de entrada en mora**

Delinquency analysis: 18 months* delinquency recovery rate (years after delinquency* occurs) - Detailed by quarters of occurrence**

Activos / Assets: Préstamos a PYMES / SME Loans

Fecha / Date: 31/03/2011

Divisa / Currency: EUR

Esta serie histórica calculada a esta fecha puede diferir de las series históricas calculadas con anterioridad a consecuencia de cobros de los activos titulizados comunicados o modificados por el Administrador correspondiente con posterioridad a sus fechas de efectividad / This historical series calculated as at today's date may differ from previously calculated historical series following collections of the securitized assets communicated or modified by the relevant Servicer after their effective dates

Entrada en mora* Delinquency*	Total	2002	2003	2004	2005	2006	2007	2008	2009	2010	2011
Σ Saldo Vivo Activos entrada mora* (Ppal.Miles €) Outstanding Balance of Assets upon delinquency* (€ thou. Principal) Σ	7.317,624	659,599	1.002,613	2.035,869	354,356	657,938	464,738	145,819	537,856	1.347,744	111,092
Nº Activos / Nº. of Assets	109	7	22	21	16	11	6	8	9	6	3
1	2,82%	0,00%	0,00%	9,86%	0,00%	0,81%	0,00%	0,00%	0,00%	0,00%	0,00%
2	3,91%	7,94%	1,72%	9,95%	2,34%	0,81%	0,00%	0,00%	0,00%	0,00%	
3	13,33%	68,05%	16,85%	15,29%	2,75%	0,81%	0,00%	7,00%	0,12%	1,51%	
4	16,65%	68,05%	20,23%	25,20%	2,75%	1,96%	0,00%	7,00%	0,12%	1,51%	
5	20,21%	68,05%	20,23%	32,57%	14,61%	1,96%	1,78%	48,14%	0,12%	1,51%	
6	24,11%	68,05%	22,34%	33,48%	14,61%	1,96%	1,78%	48,14%	45,86%		
7	26,50%	68,05%	32,92%	36,39%	14,61%	1,96%	1,78%	54,45%	45,86%		
8	31,59%	68,05%	36,17%	44,56%	14,61%	27,17%	3,51%	54,45%	45,86%		
9	31,63%	68,05%	36,17%	44,66%	14,61%	27,17%	3,51%	55,03%	45,86%		
10	34,84%	68,05%	36,17%	53,65%	14,61%	35,01%	3,51%	55,03%			
11	34,85%	68,05%	36,17%	53,65%	14,61%	35,01%	3,73%	55,03%			
12	36,06%	68,05%	36,17%	53,65%	14,61%	35,01%	22,68%	55,03%			
13	37,89%	68,05%	36,17%	59,97%	14,61%	35,84%	22,68%	55,03%			
14	37,99%	68,05%	36,90%	59,97%	14,61%	35,84%	22,68%				
15	38,50%	68,05%	40,61%	59,97%	14,61%	35,84%	22,68%				
16	38,50%	68,05%	40,67%	59,97%	14,61%	35,84%	22,68%				
17	38,51%	68,05%	40,72%	59,97%	14,61%	35,84%	22,68%				
18	38,53%	68,05%	40,82%	59,97%	14,61%	35,84%					
19	42,99%	71,88%	45,94%	72,24%	14,61%	35,84%					

*Incluye en su caso los activos titulizados clasificados como dudosos/fallidos por duda razonable sobre reembolso total
*Includes securitized assets, if any, classified as doubtful or bad debts because there are reasonable doubts as to full repayment

**Sólo se muestran datos de periodos en los que hay entradas en mora analizada
**Details are only given for periods in which analysed delinquencies occur

BBVA-2 FTPYME-ICO Fondo de Titulización de Activos

Cartera de Activos Titulizados / Portfolio of Securitised Assets

Análisis de morosidad: Tasa de recuperación de mora 18 meses* (años desde entrada en mora*) - Detalle por trimestres de entrada en mora**

Delinquency analysis: 18 months* delinquency recovery rate (years after delinquency* occurs) - Detailed by quarters of occurrence**

Activos / Assets: Préstamos a PYMES / SME Loans

Fecha / Date: 31/03/2011

Divisa / Currency: EUR

Esta serie histórica calculada a esta fecha puede diferir de las series históricas calculadas con anterioridad a consecuencia de cobros de los activos titulizados comunicados o modificados por el Administrador correspondiente con posterioridad a sus fechas de efectividad / This historical series calculated as at today's date may differ from previously calculated historical series following collections of the securitised assets communicated or modified by the relevant Servicer after their effective dates

	Total	2002	2003	2004	2005	2006	2007	2008	2009	2010	2011
20	43,00%	71,88%	45,99%	72,24%	14,61%	35,84%					
21	43,00%	71,88%	46,02%	72,24%	14,61%	35,84%					
22	43,01%	71,88%	46,07%	72,24%	14,61%						
23	43,01%	71,88%	46,07%	72,24%	14,61%						
24	43,01%	71,88%	46,07%	72,24%	14,61%						
25	43,02%	71,88%	46,14%	72,24%	14,61%						
26	43,03%	71,88%	46,26%	72,24%							
27	43,03%	71,88%	46,26%	72,24%							
28	43,06%	71,88%	46,45%	72,24%							
29	43,06%	71,88%	46,49%	72,24%							
30	43,07%	71,88%	46,55%								
31	43,07%	71,88%	46,55%								
32	43,07%	71,88%	46,55%								
33	43,07%	71,88%	46,55%								
34	43,07%	71,88%									
35	43,07%	71,88%									
36	43,07%	71,88%									
37	43,07%	71,88%									

*Incluye en su caso los activos titulizados clasificados como dudosos/fallidos por duda razonable sobre reembolso total
*Includes securitised assets, if any, classified as doubtful or bad debts because there are reasonable doubts as to full repayment

**Sólo se muestran datos de periodos en los que hay entradas en mora analizada
**Details are only given for periods in which analysed delinquencies occur