

## BBVA-8 FTPYME Fondo de Titulización de Activos

### Cartera de Activos Titulizados / Portfolio of Securitised Assets

**Análisis de morosidad: Tasa de morosidad 12 meses\***

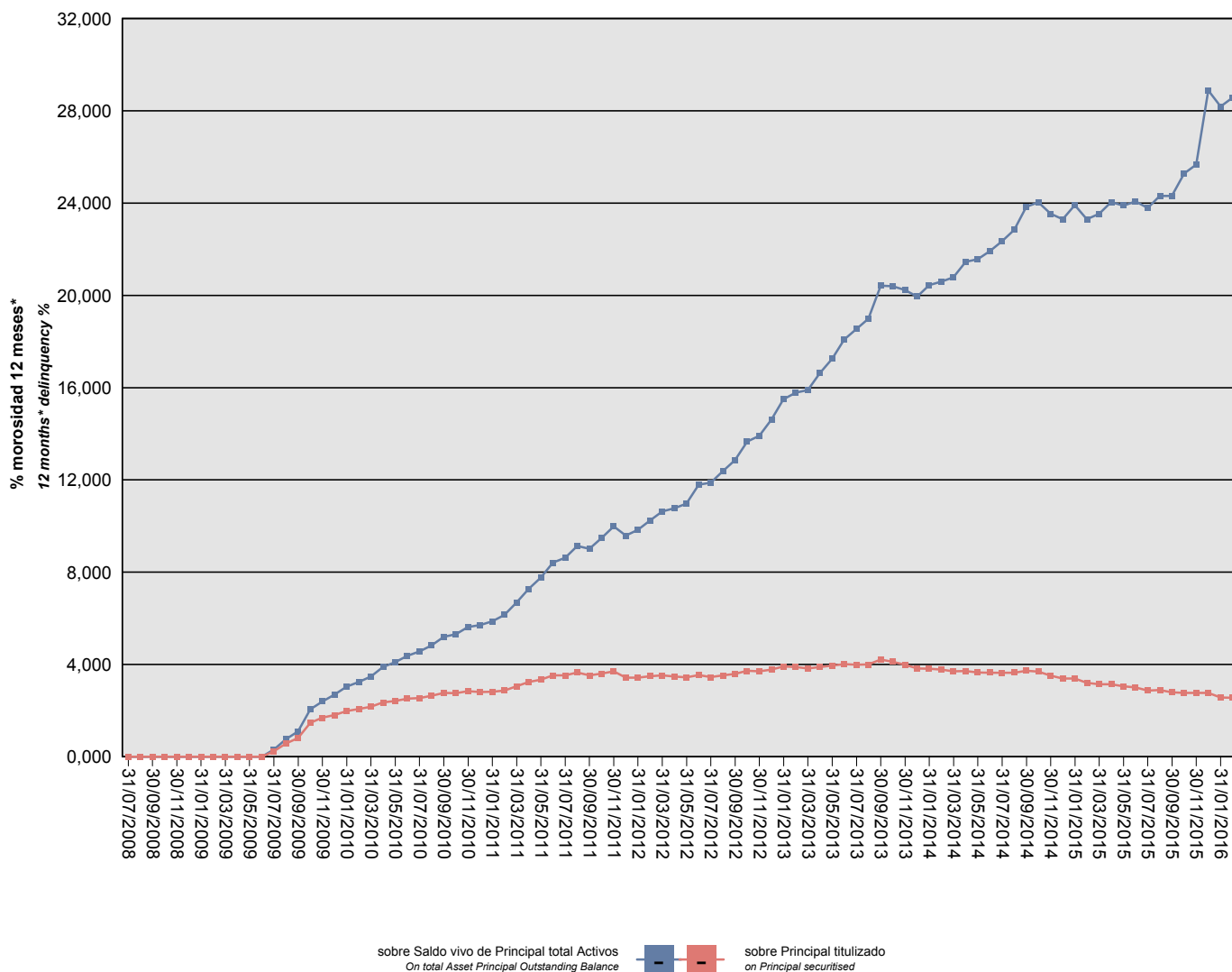
**Delinquency analysis: 12 months\* delinquency rate**

**Activos / Assets: Préstamos a PYMES / SME Loans**

**Fecha / Date: 29/02/2016**

**Divisa / Currency: EUR**

Esta serie histórica calculada a esta fecha puede diferir de las series históricas calculadas con anterioridad a consecuencia de cobros de los activos titulizados comunicados o modificados por el Administrador correspondiente con posterioridad a sus fechas de efectividad / This historical series calculated as at today's date may differ from previously calculated historical series following collections of the securitised assets communicated or modified by the relevant Servicer after their effective dates



\*Incluye en su caso los activos titulizados clasificados como dudosos/fallidos por duda razonable sobre reembolso total.  
\*Includes securitised assets, if any, classified as doubtful or bad debts because there are reasonable doubts as to full repayment.

## BBVA-8 FTPYME Fondo de Titulización de Activos

### Cartera de Activos Titulizados / Portfolio of Securitised Assets

**Análisis de morosidad: Tasa de morosidad 12 meses\***  
**Delinquency analysis: 12 months\* delinquency rate**

**Activos / Assets: Préstamos a PYMES / SME Loans**  
**Fecha / Date: 29/02/2016**  
**Divisa / Currency: EUR**

Esta serie histórica calculada a esta fecha puede diferir de las series históricas calculadas con anterioridad a consecuencia de cobros de los activos titulizados comunicados o modificados por el Administrador correspondiente con posterioridad a sus fechas de efectividad / This historical series calculated as at today's date may differ from previously calculated historical series following collections of the securitised assets communicated or modified by the relevant Servicer after their effective dates

Fecha Date	Saldo vivo de Activos en mora *(Ppal. Miles €) Delinquent *Asset Outstanding Balance (€ thou. Principal)	% morosidad 12 meses* 12 months* delinquency %	
		sobre Saldo vivo de Principal total Activos On total Asset Principal Outstanding Balance	sobre Principal titulizado on Principal securitised
31/07/2008	0,000	0,00%	0,00%
31/08/2008	0,000	0,00%	0,00%
30/09/2008	0,000	0,00%	0,00%
31/10/2008	0,000	0,00%	0,00%
30/11/2008	0,000	0,00%	0,00%
31/12/2008	0,000	0,00%	0,00%
31/01/2009	0,000	0,00%	0,00%
28/02/2009	0,000	0,00%	0,00%
31/03/2009	0,000	0,00%	0,00%
30/04/2009	0,000	0,00%	0,00%
31/05/2009	0,000	0,00%	0,00%
30/06/2009	0,000	0,00%	0,00%
31/07/2009	2.613,869	0,31%	0,24%
31/08/2009	6.276,191	0,76%	0,57%
30/09/2009	8.875,775	1,09%	0,81%
31/10/2009	16.209,670	2,05%	1,47%
30/11/2009	18.576,844	2,40%	1,69%
31/12/2009	19.810,039	2,69%	1,80%
31/01/2010	21.745,095	3,03%	1,98%
28/02/2010	22.761,858	3,24%	2,07%
31/03/2010	23.813,393	3,48%	2,16%
30/04/2010	25.869,941	3,89%	2,35%
31/05/2010	26.638,793	4,11%	2,42%
30/06/2010	27.683,102	4,38%	2,52%
31/07/2010	28.001,125	4,57%	2,55%
31/08/2010	29.010,928	4,82%	2,64%
30/09/2010	30.462,775	5,20%	2,77%
31/10/2010	30.334,864	5,31%	2,76%
30/11/2010	31.211,453	5,62%	2,84%
31/12/2010	30.812,221	5,71%	2,80%
31/01/2011	30.925,414	5,87%	2,81%
28/02/2011	31.583,796	6,15%	2,87%
31/03/2011	33.524,145	6,69%	3,05%
30/04/2011	35.650,893	7,28%	3,24%
31/05/2011	36.779,126	7,77%	3,34%
30/06/2011	38.778,523	8,41%	3,52%
31/07/2011	38.736,747	8,63%	3,52%
31/08/2011	40.205,406	9,14%	3,65%
30/09/2011	38.778,518	9,01%	3,52%

\*Incluye en su caso los activos titulizados clasificados como dudosos/fallidos por duda razonable sobre reembolso total.  
 \*Includes securitised assets, if any, classified as doubtful or bad debts because there are reasonable doubts as to full repayment.

## BBVA-8 FTPYME Fondo de Titulización de Activos

### Cartera de Activos Titulizados / Portfolio of Securitised Assets

**Análisis de morosidad: Tasa de morosidad 12 meses\***  
**Delinquency analysis: 12 months\* delinquency rate**

**Activos / Assets: Préstamos a PYMES / SME Loans**  
**Fecha / Date: 29/02/2016**  
**Divisa / Currency: EUR**

Esta serie histórica calculada a esta fecha puede diferir de las series históricas calculadas con anterioridad a consecuencia de cobros de los activos titulizados comunicados o modificados por el Administrador correspondiente con posterioridad a sus fechas de efectividad / This historical series calculated as at today's date may differ from previously calculated historical series following collections of the securitised assets communicated or modified by the relevant Servicer after their effective dates

Fecha Date	Saldo vivo de Activos en mora *(Ppal. Miles €) Delinquent *Asset Outstanding Balance (€ thou. Principal)	% morosidad 12 meses* 12 months* delinquency %	
		sobre Saldo vivo de Principal total Activos On total Asset Principal Outstanding Balance	sobre Principal titulado on Principal securitised
31/10/2011	39.647,516	9,48%	3,60%
30/11/2011	40.784,720	9,98%	3,71%
31/12/2011	37.773,668	9,58%	3,43%
31/01/2012	37.740,621	9,83%	3,43%
29/02/2012	38.448,506	10,25%	3,49%
31/03/2012	38.758,090	10,63%	3,52%
30/04/2012	38.274,349	10,77%	3,48%
31/05/2012	37.850,661	10,98%	3,44%
30/06/2012	38.910,557	11,80%	3,54%
31/07/2012	37.908,371	11,88%	3,45%
31/08/2012	38.752,116	12,38%	3,52%
30/09/2012	39.431,132	12,86%	3,58%
31/10/2012	40.956,180	13,66%	3,72%
30/11/2012	40.711,415	13,91%	3,70%
31/12/2012	41.531,820	14,62%	3,78%
31/01/2013	43.069,392	15,49%	3,91%
28/02/2013	42.775,757	15,78%	3,89%
31/03/2013	42.141,180	15,90%	3,83%
30/04/2013	42.721,252	16,64%	3,88%
31/05/2013	43.480,044	17,26%	3,95%
30/06/2013	44.087,578	18,09%	4,01%
31/07/2013	43.851,831	18,54%	3,99%
31/08/2013	43.955,681	18,98%	4,00%
30/09/2013	46.347,530	20,43%	4,21%
31/10/2013	45.284,231	20,40%	4,12%
30/11/2013	43.917,218	20,23%	3,99%
31/12/2013	42.077,568	19,95%	3,82%
31/01/2014	41.891,858	20,44%	3,81%
28/02/2014	41.488,114	20,60%	3,77%
31/03/2014	40.786,101	20,78%	3,71%
30/04/2014	40.815,237	21,45%	3,71%
31/05/2014	40.201,882	21,57%	3,65%
30/06/2014	40.068,215	21,92%	3,64%
31/07/2014	39.982,689	22,35%	3,63%
31/08/2014	40.083,165	22,84%	3,64%
30/09/2014	40.998,894	23,84%	3,73%
31/10/2014	40.640,708	24,04%	3,69%
30/11/2014	38.718,064	23,53%	3,52%
31/12/2014	37.350,172	23,30%	3,40%

\*Incluye en su caso los activos titulizados clasificados como dudosos/fallidos por duda razonable sobre reembolso total.  
 \*Includes securitised assets, if any, classified as doubtful or bad debts because there are reasonable doubts as to full repayment.

## BBVA-8 FTPYME Fondo de Titulización de Activos

### Cartera de Activos Titulizados / Portfolio of Securitised Assets

**Análisis de morosidad: Tasa de morosidad 12 meses\***  
**Delinquency analysis: 12 months\* delinquency rate**

**Activos / Assets: Préstamos a PYMES / SME Loans**  
**Fecha / Date: 29/02/2016**  
**Divisa / Currency: EUR**

Esta serie histórica calculada a esta fecha puede diferir de las series históricas calculadas con anterioridad a consecuencia de cobros de los activos titulizados comunicados o modificados por el Administrador correspondiente con posterioridad a sus fechas de efectividad / This historical series calculated as at today's date may differ from previously calculated historical series following collections of the securitised assets communicated or modified by the relevant Servicer after their effective dates

Fecha Date	Saldo vivo de Activos en mora *(Ppal. Miles €) Delinquent *Asset Outstanding Balance (€ thou. Principal)	% morosidad 12 meses* 12 months* delinquency %	
		sobre Saldo vivo de Principal total Activos On total Asset Principal Outstanding Balance	sobre Principal titulado on Principal securitised
31/01/2015	37.285,661	23,92%	3,39%
28/02/2015	35.288,704	23,30%	3,21%
31/03/2015	34.551,584	23,54%	3,14%
30/04/2015	34.529,364	24,05%	3,14%
31/05/2015	33.574,155	23,89%	3,05%
30/06/2015	33.011,806	24,08%	3,00%
31/07/2015	31.501,648	23,79%	2,86%
31/08/2015	31.781,295	24,31%	2,89%
30/09/2015	30.704,308	24,32%	2,79%
31/10/2015	30.426,047	25,28%	2,77%
30/11/2015	30.394,221	25,68%	2,76%
31/12/2015	30.375,048	28,89%	2,76%
31/01/2016	28.299,572	28,19%	2,57%
29/02/2016	28.170,518	28,58%	2,56%

\*Incluye en su caso los activos titulizados clasificados como dudosos/fallidos por duda razonable sobre reembolso total.  
 \*Includes securitised assets, if any, classified as doubtful or bad debts because there are reasonable doubts as to full repayment.