

# BANKINTER 1 Fondo de Titulización Hipotecaria

## Cartera de Activos Titulizados / Portfolio of Securitised Assets

**Análisis de morosidad: Tasa de recuperación de mora +3 meses (años desde entrada en mora) - Detalle por trimestres de entrada en mora\*\***

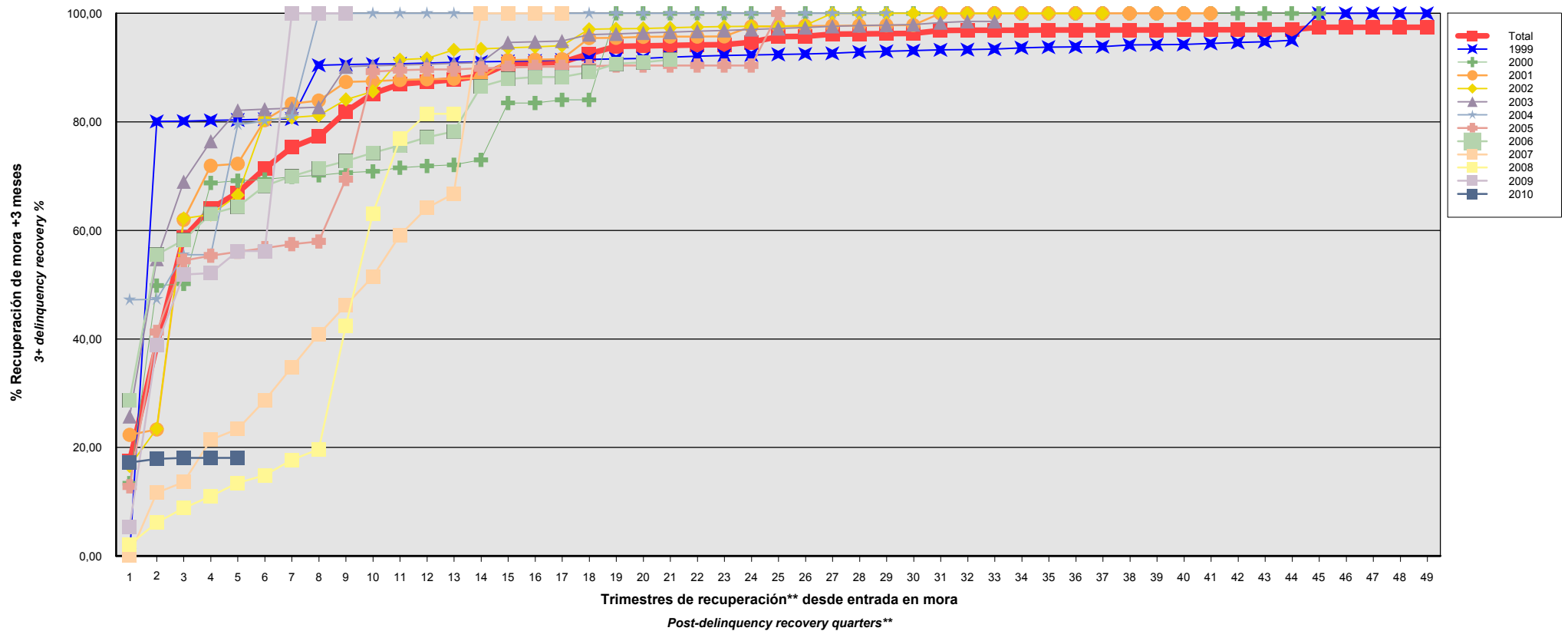
**Delinquency analysis: 3+ months delinquency recovery rate (years after delinquency occurs) - Detailed by quarters of occurrence\*\***

**Activos / Assets: Préstamos hipotecarios vivienda (PHs) / Residential mortgage loans**

**Fecha / Date: 31/03/2011**

**Divisa / Currency: EUR**

Esta serie histórica calculada a esta fecha puede diferir de las series históricas calculadas con anterioridad a consecuencia de cobros de los activos titulizados comunicados o modificados por el Administrador correspondiente con posterioridad a sus fechas de efectividad / This historical series calculated as at today's date may differ from previously calculated historical series following collections of the securitised assets communicated or modified by the relevant Servicer after their effective dates



\*\*Sólo se muestran datos de periodos en los que hay entradas en mora analizada  
 \*\*Details are only given for periods in which analysed delinquencies occur

# BANKINTER 1 Fondo de Titulización Hipotecaria

## Cartera de Activos Titulizados / Portfolio of Securitised Assets

**Análisis de morosidad: Tasa de recuperación de mora +3 meses (años desde entrada en mora) - Detalle por trimestres de entrada en mora\*\***

**Delinquency analysis: 3+ months delinquency recovery rate (years after delinquency occurs) - Detailed by quarters of occurrence\*\***

**Activos / Assets: Préstamos hipotecarios vivienda (PHs) / Residential mortgage loans**

**Fecha / Date: 31/03/2011**

**Divisa / Currency: EUR**

Esta serie histórica calculada a esta fecha puede diferir de las series históricas calculadas con anterioridad a consecuencia de cobros de los activos titulizados comunicados o modificados por el Administrador correspondiente con posterioridad a sus fechas de efectividad / This historical series calculated as at today's date may differ from previously calculated historical series following collections of the securitised assets communicated or modified by the relevant Servicer after their effective dates

Entrada en mora* Delinquency*	Total	1999	2000	2001	2002	2003	2004	2005	2006	2007	2008	2009	2010
Σ Saldo Vivo Activos entrada mora* (Ppal.Miles €) Outstanding Balance of Assets upon delinquency* (€ thou. Principal) Σ	3.610,145	295,207	280,090	818,442	571,029	535,714	130,840	370,034	151,039	23,906	148,439	231,187	54,219
Nº Activos / Nº. of Assets	95	6	7	16	15	13	5	10	6	1	7	6	3
1	17,45%	0,03%	13,40%	22,31%	16,58%	25,69%	47,20%	12,82%	28,71%	0,10%	2,07%	5,40%	17,21%
2	38,88%	80,08%	49,83%	23,31%	23,45%	54,72%	47,31%	41,27%	55,53%	11,68%	6,16%	38,82%	17,87%
3	58,64%	80,15%	50,16%	61,96%	62,20%	68,99%	55,54%	54,42%	58,22%	13,62%	8,82%	51,86%	18,09%
4	64,03%	80,28%	68,75%	71,91%	62,94%	76,44%	55,54%	55,36%	63,08%	21,43%	11,04%	52,15%	18,09%
5	66,94%	80,37%	69,16%	72,30%	66,52%	82,14%	79,51%	56,05%	64,38%	23,42%	13,46%	56,18%	18,09%
6	71,36%	80,49%	69,40%	80,34%	80,41%	82,36%	80,16%	56,74%	68,20%	28,63%	14,86%	56,18%	
7	75,32%	80,54%	69,89%	83,33%	80,81%	82,54%	81,00%	57,45%	69,96%	34,81%	17,73%	100,00%	
8	77,30%	90,46%	70,18%	83,92%	81,20%	82,73%	100,00%	57,98%	71,46%	40,85%	19,65%	100,00%	
9	81,90%	90,59%	70,65%	87,36%	84,14%	90,18%	100,00%	69,47%	72,79%	46,20%	42,46%	100,00%	
10	85,20%	90,66%	70,90%	87,51%	85,63%	90,33%	100,00%	89,28%	74,31%	51,48%	63,10%		
11	86,96%	90,72%	71,54%	87,75%	91,48%	90,49%	100,00%	89,54%	75,65%	59,15%	76,88%		
12	87,38%	90,86%	71,89%	87,86%	91,72%	90,64%	100,00%	89,67%	77,16%	64,16%	81,48%		
13	87,77%	91,00%	72,08%	87,97%	93,29%	90,80%	100,00%	89,69%	78,26%	66,76%	81,48%		
14	88,52%	91,07%	73,01%	88,14%	93,46%	90,96%	100,00%	89,88%	86,52%	100,00%			
15	90,72%	91,18%	83,50%	91,39%	93,64%	94,64%	100,00%	90,01%	87,90%	100,00%			
16	90,84%	91,25%	83,50%	91,50%	93,83%	94,79%	100,00%	90,18%	88,27%	100,00%			
17	90,97%	91,42%	84,08%	91,59%	94,07%	94,90%	100,00%	90,18%	88,27%	100,00%			
18	92,55%	91,54%	84,08%	95,45%	97,06%	96,07%	100,00%	90,26%	89,17%				
19	93,92%	91,63%	100,00%	95,50%	97,17%	96,23%	100,00%	90,40%	90,72%				

## BANKINTER 1 Fondo de Titulización Hipotecaria

### Cartera de Activos Titulizados / Portfolio of Securitised Assets

**Análisis de morosidad: Tasa de recuperación de mora +3 meses (años desde entrada en mora) - Detalle por trimestres de entrada en mora\*\***

**Delinquency analysis: 3+ months delinquency recovery rate (years after delinquency occurs) - Detailed by quarters of occurrence\*\***

**Activos / Assets: Préstamos hipotecarios vivienda (PHs) / Residential mortgage loans**

**Fecha / Date: 31/03/2011**

**Divisa / Currency: EUR**

Esta serie histórica calculada a esta fecha puede diferir de las series históricas calculadas con anterioridad a consecuencia de cobros de los activos titulizados comunicados o modificados por el Administrador correspondiente con posterioridad a sus fechas de efectividad / This historical series calculated as at today's date may differ from previously calculated historical series following collections of the securitised assets communicated or modified by the relevant Servicer after their effective dates

	Total	1999	2000	2001	2002	2003	2004	2005	2006	2007	2008	2009	2010
20	94,02%	91,70%	100,00%	95,67%	97,24%	96,39%	100,00%	90,40%	91,00%				
21	94,11%	91,93%	100,00%	95,71%	97,35%	96,55%	100,00%	90,40%	91,50%				
22	94,18%	92,10%	100,00%	95,74%	97,50%	96,72%	100,00%	90,40%					
23	94,23%	92,23%	100,00%	95,77%	97,58%	96,88%	100,00%	90,40%					
24	94,68%	92,36%	100,00%	97,58%	97,62%	97,05%	100,00%	90,40%					
25	95,71%	92,45%	100,00%	97,61%	97,62%	97,23%	100,00%	100,00%					
26	95,78%	92,54%	100,00%	97,69%	97,79%	97,40%	100,00%						
27	96,18%	92,65%	100,00%	97,72%	100,00%	97,61%	100,00%						
28	96,23%	92,89%	100,00%	97,76%	100,00%	97,77%	100,00%						
29	96,27%	93,02%	100,00%	97,81%	100,00%	97,87%	100,00%						
30	96,30%	93,15%	100,00%	97,84%	100,00%	97,95%							
31	96,85%	93,29%	100,00%	100,00%	100,00%	98,29%							
32	96,89%	93,33%	100,00%	100,00%	100,00%	98,53%							
33	96,90%	93,41%	100,00%	100,00%	100,00%	98,53%							
34	96,92%	93,67%	100,00%	100,00%	100,00%								
35	96,93%	93,80%	100,00%	100,00%	100,00%								
36	96,93%	93,85%	100,00%	100,00%	100,00%								
37	96,94%	93,89%	100,00%	100,00%	100,00%								
38	96,96%	94,19%	100,00%	100,00%									
39	96,96%	94,23%	100,00%	100,00%									
40	96,97%	94,27%	100,00%	100,00%									
41	96,98%	94,47%	100,00%	100,00%									
42	97,00%	94,63%	100,00%										
43	97,01%	94,79%	100,00%										
44	97,03%	95,06%	100,00%										
45	97,44%	100,00%	100,00%										

## BANKINTER 1 Fondo de Titulización Hipotecaria

### Cartera de Activos Titulizados / Portfolio of Securitised Assets

**Análisis de morosidad:** Tasa de recuperación de mora +3 meses (años desde entrada en mora) - Detalle por trimestres de entrada en mora\*\*

**Delinquency analysis:** 3+ months delinquency recovery rate (years after delinquency occurs) - Detailed by quarters of occurrence\*\*

**Activos / Assets:** Préstamos hipotecarios vivienda (PHs) / Residential mortgage loans

**Fecha / Date:** 31/03/2011

**Divisa / Currency:** EUR

Esta serie histórica calculada a esta fecha puede diferir de las series históricas calculadas con anterioridad a consecuencia de cobros de los activos titulizados comunicados o modificados por el Administrador correspondiente con posterioridad a sus fechas de efectividad / This historical series calculated as at today's date may differ from previously calculated historical series following collections of the securitised assets communicated or modified by the relevant Servicer after their effective dates

	Total	1999	2000	2001	2002	2003	2004	2005	2006	2007	2008	2009	2010
46	97,44%	100,00%											
47	97,44%	100,00%											
48	97,44%	100,00%											
49	97,44%	100,00%											