

Publication Date: June 3, 2008

Presale Report: RMBS/Prime/Spain

Bankinter 17 Fondo de Titulización de Activos €1 Billion Mortgage-Backed Floating-Rate Notes

Primary analyst: Isabel Plaza, Madrid (34) 91-788-7203, isabel_plaza@standardandpoors.com

Secondary analyst: Cristina Sevilla, Madrid (34) 91-788-7201, cristina_sevilla@standardandpoors.com

Surveillance analyst: Rocio Romero, Madrid (34) 91-389-6968, rocio_romero@standardandpoors.com

Group e-mail address: StructuredFinanceEurope@standardandpoors.com

This presale report is based on information as of June 3, 2008. The credit ratings shown are preliminary. This report does not constitute a recommendation to buy, hold, or sell securities. Subsequent information may result in the assignment of initial credit ratings that differ from the preliminary credit ratings.

Class	Prelim. rating*	Prelim. amount (Mil. €)	Available credit support ¹ (%)	Interest	Legal final maturity
A	AAA	952.50	7.05	Three-month EURIBOR plus a margin	April 18, 2051
B	A	34.00	3.65	Three-month EURIBOR plus a margin	April 18, 2051
C	BBB	13.50	2.30	Three-month EURIBOR plus a margin	April 18, 2051

*The rating on each class of securities is preliminary as of June 3, 2008, and subject to change at any time. Initial credit ratings are expected to be assigned on the closing date subject to a satisfactory review of the transaction documents and legal opinion, and completion of a corporate overview. Standard & Poor's ratings address timely interest and ultimate principal.
EURIBOR—European interbank offered rate.

Transaction Participants	
Originator	Bankinter S.A.
Arranger	Bankinter S.A. and Europea de Titulización S.G.F.T., S.A.
Seller	Bankinter S.A.
Mortgage administrator/servicer	Bankinter S.A.
Security trustee	Europea de Titulización S.G.F.T., S.A.
Interest swap counterparty	Bankinter S.A.
Transaction account provider	Bankinter S.A.

Supporting Ratings	
Bankinter S.A. as interest swap counterparty and transaction account provider	A/Positive/A-1

Transaction Key Features	
Expecting closing date	June 2008
Collateral	First-ranking mortgage loans and credits backed by residential properties (93.46%) and commercial properties (6.54%)
Principal outstanding (€)	1,232,487,715.66
Country of origination	Spain
Concentration	19.33% of the pool is concentrated in the Valencia region, 17.14% in Madrid, 16.04% in Andalucía, and 12.96% in Catalonia
Weighted-average LTV ratio (%)	53.71
Average loan size balance (€)	122,611
Loan size range (€)	2,885.16 to 1,575,674.00
Weighted-average seasoning (months)	22.7
Weighted-average mortgage interest rate (%)	5.12
Weighted-average margin at closing (%)	0.56
Redemption profile	100% of the loans are amortizing
Cash reserve (%)	2.30
Mortgage priority	100% first-ranking mortgages
Maximum LTV ratio (%)	99.64
Number of jumbo loans (>€400,000)	182 (7.94% of the pool by balance)

Transaction Summary

Standard & Poor's Ratings Services has assigned preliminary credit ratings to the €1 billion mortgage-backed floating-rate notes to be issued by Bankinter 17 Fondo de Titulización de Activos.

The originator is Bankinter S.A. At closing, Bankinter will sell the issuer a €1 billion closed pool of mortgage loans, which will be backed by first-ranking mortgages.

To fund this purchase, Bankinter 17 will issue three classes of floating-rate, quarterly paying notes.

Bankinter 17 is a fund whose sole purposes will be to purchase the collateral from Bankinter, issue the notes, and carry out related activities. The issuer will hold a distinct and closed pool of assets available for distribution to the noteholders. The assets will be insulated from the insolvency of the originator and the trustee.

The preliminary ratings on the notes reflect the subordination of the respective classes of notes below them, the cash reserve account, the interest rate swap, and comfort provided by various other contracts.

Bankinter, which ranks among the top 10 Spanish banks, mainly focuses on three areas: retail, wholesale corporate, and private banking. Bankinter was founded in 1965 as a joint venture between the former Banco de Santander and Bank of America. Since then, both banks have divested their participations and Bankinter's shares are widely held and publicly traded on the Madrid stock market.

Notable Features

This will be the 17th securitization of Bankinter's mortgage credit and the fourth where "*Hipoteca SIN*" credits are being securitized. *Hipoteca SIN* credits are flexible loans that allow borrowers, with Bankinter's approval, to take payment holidays, make additional draws, and increase the term of their mortgage credit.

As in the previous Bankinter residential mortgage-backed securities (RMBS) transaction (Bankinter 16), a small percentage of the loans from the preliminary pool will be backed not by residential properties, but by commercial properties.

In this transaction, Bankinter will act as originator, servicer, transaction accounts provider, and swap counterparty.

As in other Spanish transactions, interest and principal will be combined into a single priority of payments, with some triggers in the payment of interest to protect senior noteholders.

Strengths, Concerns, And Mitigating Factors

Strengths

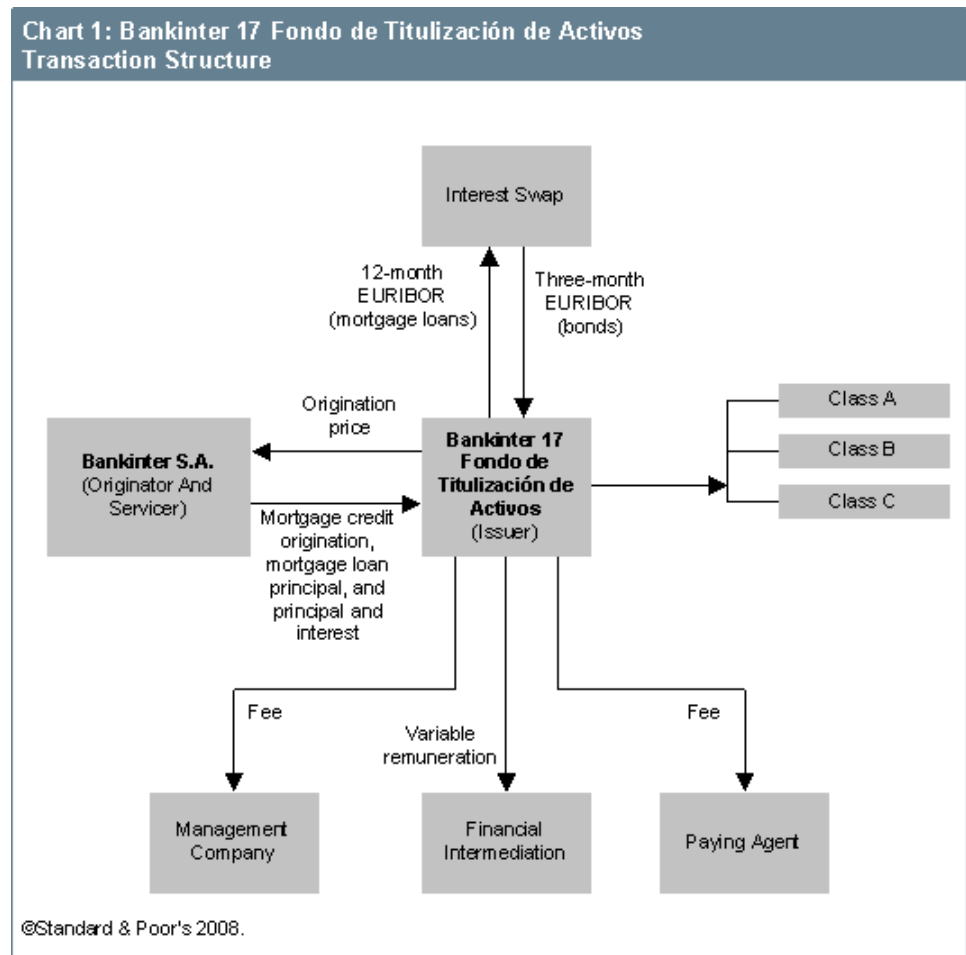
- The collateral is of a high quality, comprising first-ranking mortgage loans, with a weighted-average LTV ratio of 53.72% and an average seasoning of 22.7 months.
- There is adequate credit enhancement for the target ratings. The cash reserve, which will be fully funded at closing using the class E note issuance proceeds, and the excess spread, will both be available to cover any interest or principal shortfalls.
- Bankinter has good servicing and securitization experience; this will be its 17th RMBS transaction.
- There will be a swap agreement between the issuer and Bankinter to mitigate interest-rate basis risk in the transaction.
- Loans over 18 months in arrears will be written off, allowing for an early excess spread trapping mechanism.

Concerns and mitigating factors

- 16.95% of the preliminary pool comprises *Hipoteca SIN* flexible credits that allow borrowers to take payment holidays, make further drawdowns, and increase the term of their mortgage credit. Standard & Poor's analysis of the portfolio has taken into account the characteristics of the *Hipoteca SIN* products, which are in all cases subject to Bankinter's approval.
- The excess spread of the pool may decrease from its current margin of 56 basis points (bps) because mortgage credit can be renegotiated at the borrowers' request. Standard & Poor's stressed the available margin in its cash flow analysis. According to the offering circular, margins can be renegotiated down to a floor of the weighted-average margin of the pool of 35 bps. Bankinter will guarantee this in the transaction by paying the difference in spread if the weighted-average spread is lower than 40 bps.
- Of the loans in the preliminary pool, 6.54% are secured by a commercial property rather than a residential one. Standard & Poor's has taken this into account in its credit analysis of the pool.
- The pool has geographical concentration: 65.46% of the pool is concentrated in Valencia, Madrid, Catalonia, and Andalucía. Standard & Poor's has taken into account the presence of any regional concentrations in its analysis of the portfolio.

Transaction Structure

At closing, the originator will issue mortgage certificates ("*certificados de transmisión hipotecaria*"; CTHs) that Europea de Titulización S.G.F.T., S.A., the trustee, will purchase on the issuer's behalf (see chart 1).



Each CTH will represent, in equal amount and interest rate, the securitized mortgage loans and mortgage credits. The CTHs will entitle Bankinter 17 to any rights and proceeds due under principal and interest on the mortgage loans and the credit line first draws.

The total outstanding amount of the mortgage credits and mortgage loans purchased for the final pool will be €1 billion. To fund the purchase of collateral, Bankinter 17 will issue three classes of rated notes. The reserve fund will be fully funded on the closing date through a subordinated loan.

The collateral will be serviced by Bankinter, which will collect the amounts due under the mortgages. It will then transfer the collected installments weekly into the treasury account.

The issuer will enter into a basis swap agreement with Bankinter to hedge any basis risk resulting from the differences between the index on the mortgages in the pool and the reference interest rate on the notes. The fund will pay 12-month EURIBOR from the collateral. The swap counterparty will pay three-month EURIBOR.

On each quarterly interest payment date, the issuer will pay, in arrears, the interest due to the noteholders. To make the payments, the issuer will have as available funds the

proceeds of the interest swap, interest earned on the transaction accounts, the reserve fund, and, if necessary, principal received under the mortgage credit and any other proceeds received in connection with the mortgage credit.

All interest and principal received can be mixed to pay principal and interest due under the notes. There will be a trigger so that in a stressful economic environment the more senior notes will amortize before interest on the subordinated classes of notes is paid (see "*Priority of payments*").

Bankinter S.A., Originator And Servicer

The rating on Spain-based Bankinter (A/Positive/A-1) is supported by the bank's business flexibility, innovative culture, sophisticated management, outstanding efficiency, excellent asset quality track record, and sound and well-developed credit risk management. These positives are counterbalanced by meaningful reliance on wholesale funding, only adequate solvency, and lower business diversification and weaker overall market position than the largest nationwide competitors.

Bankinter's operations are focused on specific market segments where it has a competitive edge thanks to its strong management team, light and flexible operating structure, and superior IT systems. Capitalizing on these strengths, Bankinter's talented management has demonstrated its ability to adapt to changing economic and market conditions. The bank is now gradually increasing the weight of small and midsize enterprise (SME) banking and private banking in its profile, thereby enhancing its business diversification.

Bankinter has a relatively low risk profile, with high-quality residential mortgages accounting for 63% of its total portfolio, and limited market and operational risk. Asset quality indicators have remained significantly better than the market average throughout the economic cycle, as a result of the bank's good credit risk management and systems.

The bank's strong credit expansion, particularly into SMEs, during the past few years—although now decelerating—adds some risk to the balance sheet. Bankinter's sound credit risk management and tight monitoring, good track record in the middle-market segment, and strong reserve cushions, mitigate concerns about this risk. Standard & Poor's consequently expects the effect on asset quality of a higher interest rate environment and expected slowing economic growth to be contained.

Operating profitability has benefited from Bankinter's excellent and improving efficiency. This has helped absorb pressure on gross operating returns that have led bottom-line returns to average levels by domestic and international standards. Pressure on operating profitability is nevertheless abating amid a more comfortable interest rate environment and with Bankinter's less aggressive pricing.

Strong loan growth outpacing that of deposits has led Bankinter to rely on wholesale funding, including a substantial proportion of short-term financing in the funding mix. While wholesale funding needs remain manageable, they mean Bankinter has a comparatively higher exposure to trends in short-term (particularly domestic) debt markets.

Core risk-adjusted solvency is just adequate. Our analysis of Bankinter's solvency takes into account the bank's transfer of most of the credit risk associated with securitizations of mortgage loans, which has in turn freed up associated capital. We expect solvency to remain relatively stable, underpinned by slowing growth and the bank's strong capital generation capacity (including excess provisions).

Collateral Description

As of May 20, 2008, the pool comprised 10,049 amortizing mortgage loans and credits secured by first-ranking mortgages over residential owner-occupied, second-home properties in Spain and commercial properties (see table 1).

Table 1		
Pool Composition		(%)
Mortgage credit lines	First-ranking	17.95
Standard mortgage loans	First-ranking	82.04

Of the pool, 16.95% are flexible *Hipoteca SIN* mortgage credits, which are effectively a flexible credit line; the rest of the pool comprises standard mortgage loans. The main features of the *SIN* product allow borrowers, with Bankinter's approval in all cases, to make further drawdowns on the mortgage credit, to take payment holidays, and to increase the term of their mortgage credit.

Hipoteca SIN flexible loans: additional draws

Borrowers may draw further on their lines up to the original amount they borrowed at the origination date. The maximum LTV ratio is 80%. The initial and subsequent credit line drawdowns are guaranteed by the underlying property.

The portion of the mortgage credit securitized is the first drawdown made under the credit line. Further drawdowns are treated separately, but rank pari passu with the initial withdrawal.

The maximum amount to be drawn per mortgage credit is the lower of:

- The positive difference between (i) the original drawn amount, and (ii) the current amount; and
- The positive difference between (i) the original drawn amount multiplied by twice the percentage that the remaining life represents over the original term, and (ii) the current amount.

Hipoteca SIN flexible loans: payment holidays

All the mortgage credits can have payment holidays, but only after the first three years of their life. There is a maximum of three monthly installment holidays (consecutive or not) per year. For every 10 years, there is a maximum of three monthly installment holidays (consecutive or not) distributed across four years.

Pending and accrued interest is paid at once when the payment holiday is finished and principal is re-included in the outstanding balance of the mortgage credit. No mortgage credit in arrears has the option of payment holidays.

Hipoteca SIN flexible loans: increasing the original term of the mortgage credit

The current maximum term of the mortgage credit is established at 35 years. It is possible to increase the term of the mortgage credit at a rate of six months per year that has been paid, excluding the first two years. The installment then has to be recalculated. The term may be extended to a maximum of 40 years. No mortgage credit in arrears has the option to increase the maturity.

Other characteristics of the mortgage credits

Other features of the mortgage pool include:

- Of the pool, 65.46% is concentrated in Valencia, Madrid, Catalonia, and Andalucía (see chart 2).
- The pool was originated between 2003 and 2007. The weighted-average seasoning is 22.7 months, with 71.00% of the pool being originated more than 12.0 months ago (see chart 3).
- The weighted-average LTV ratio is 53.72%, the minimum 2%, and the maximum 99.64% (see chart 4).
- In the preliminary pool, 6.53% of the loans are not secured by residential properties but by commercial and other type of properties (see chart 5).
- The pool comprises floating-rate mortgage credits that are indexed to one-year EURIBOR. Mortgages in the pool have a weighted-average margin over the floating rate of 56 bps. The weighted-average interest rate is 5.12%. In addition, there are no caps or floors in the pool, and margins can be renegotiated down to a floor of a weighted-average margin of the pool of 35 bps.

Chart 2: Geographical Distribution

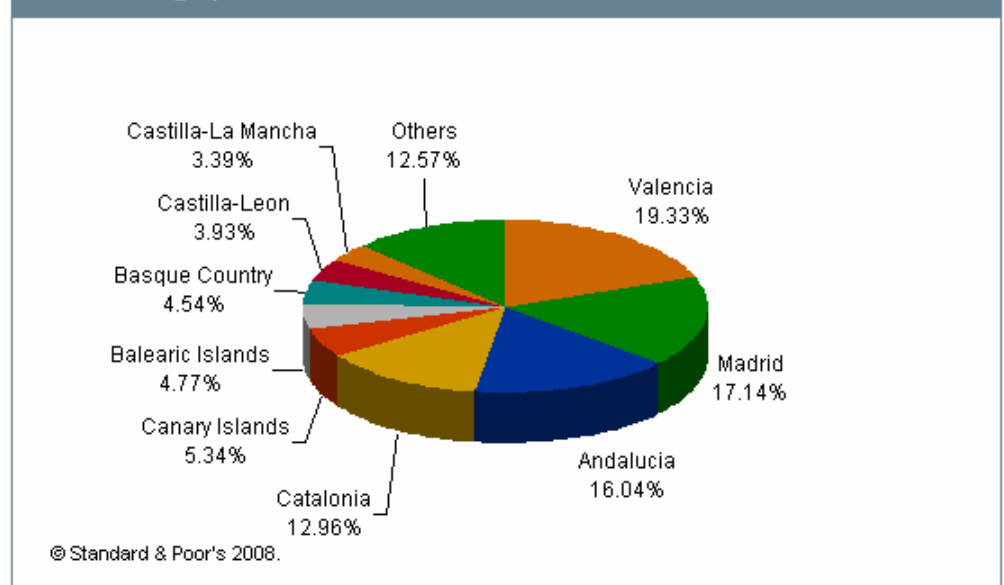
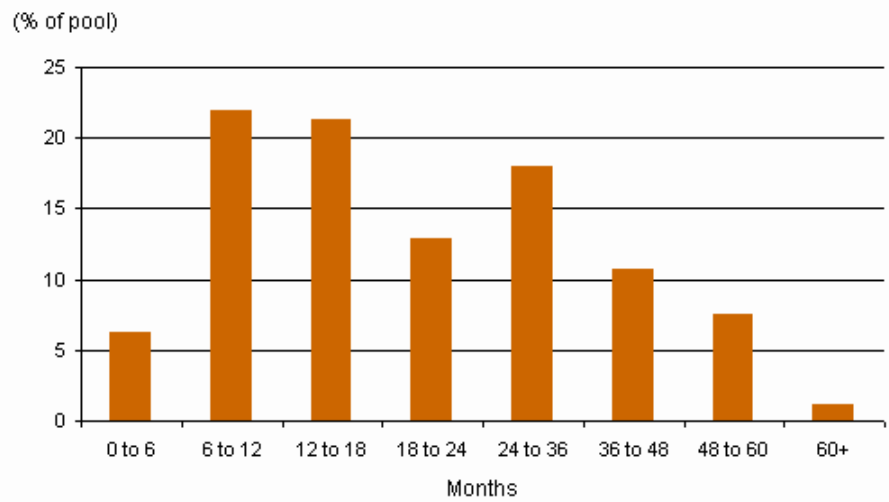
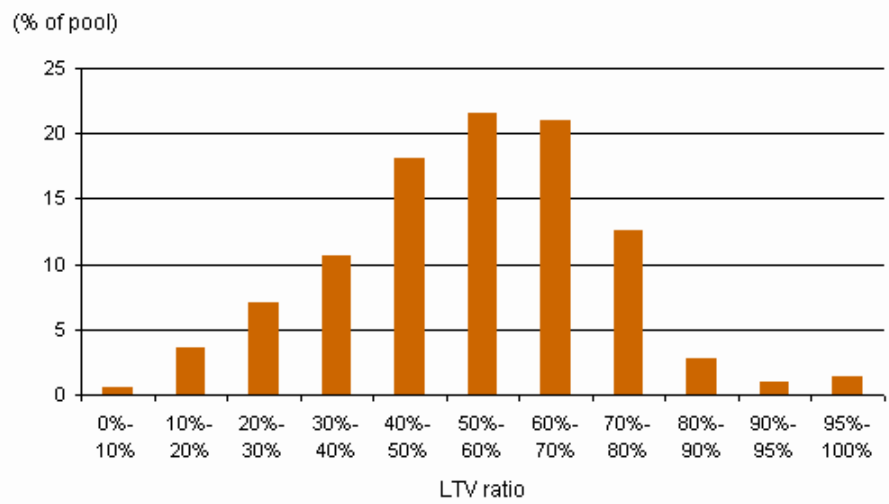


Chart 3: Seasoning Distribution



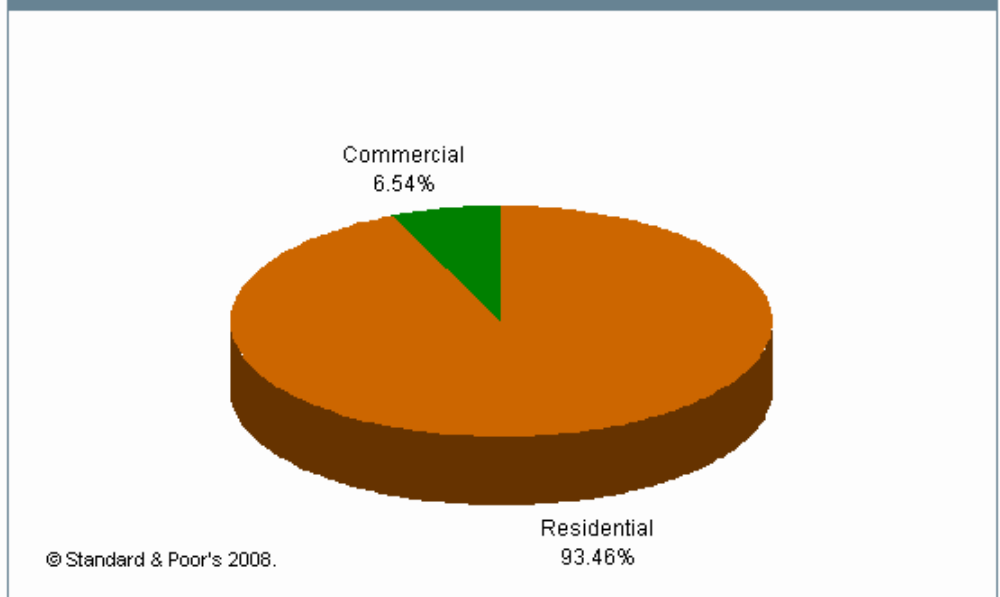
© Standard & Poor's 2008.

Chart 4: LTV Ratio Distribution



© Standard & Poor's 2008.

Chart 5: Distribution By Property Type



Credit Structure

Credit support for the notes will be provided by a combination of subordination, the reserve fund, and excess spread on the mortgages (see table 2).

Class	Rating	Size of class (%)	Mill. € (equivalent)	Credit support total (%)	Credit support reserve fund (%)	Credit support subordination (%)
A	AAA	95.25	952.50	7.05	2.30	4.75
B	A	3.40	34.00	3.65	2.30	1.35
C	BBB	1.35	31.50	2.30	2.30	—

Cash collection arrangements and transaction account

Funds received at Bankinter due to interest and principal payments of the CTHs will be transferred to the treasury account in the name of the fund seven working days after its receipt. If the administrator is downgraded below 'A-2', the transfers will be made daily.

The rest of the amounts, the reserve fund, the guaranteed investment contract (GIC) margins, the subordinated loan for initial expenses, etc., will be directly deposited in the treasury account. The treasury account for Bankinter 17 is held at Bankinter. Both will have a guaranteed interest rate of three-month EURIBOR.

According to Standard & Poor's "Revised Framework For Applying Counterparty And Supporting Party Criteria" (see "Criteria Referenced"), if the bank account provider is downgraded below 'A-1', it has 60 calendar days until it becomes an ineligible counterparty and it has to:

- Find a replacement with a short-term rating of at least 'A-1', or
- Find an adequate Standard & Poor's guarantor with a short-term rating of at least 'A-1'.

Any counterparty replacement or guarantee will be subject to rating confirmation. The downgraded counterparty will bear all the costs of the remedies.

Reserve fund

At closing, the reserve fund will be fully funded through a subordinated loan. The initial reserve amount will represent 2.3% of the original principal amount of the rated notes. The cash reserve will not amortize for the first three years of the transaction. After the third anniversary of the closing date and on each payment date, the cash reserve account will amortize if the following conditions are met:

- The outstanding balance of the loans in the pool with any payment in arrears for more than 90 days is higher than 1% of the outstanding balance of the loans in the pool;
- The reserve fund is below its required level; or
- The margin of the outstanding balance of the loans is equal to or lower than 37.6 bps.

Commingling reserve

To protect against commingling risk, if Bankinter is downgraded below a short-term rating of 'A-2', then:

- Within 30 calendar days, the servicer should find an eligible guarantor with at least a short-term rating of 'A-1'. The guarantor should provide the issuer with a first-demand, unconditional, and irrevocable guarantee equal to the commingling reserve amount to be applied to pay any amounts the servicer fails to pay the issuer for the loans. This amount, if required to be paid, would be deposited in an issuer bank account in accordance with the bank account and cash management agreements. We would expect to review the guarantee at the time the downgrade occurs; or
- Within 10 calendar days, the servicer should deposit in the issuer's bank account an amount equal to the commingling reserve amount to be applied to pay any amounts the servicer fails to pay the issuer for the loans. Alternatively, we encourage the servicer to request our written confirmation that the ratings on the notes would not be adversely affected.

On the date this commingling reserve is required, the initial amount should be a sufficient proportion of the principal amount outstanding to avoid affecting the rating on the notes.

Priority of payments

On each quarterly interest payment date (IPD), the issuer will pay in arrears the interest due to the noteholders. To make the payments, the issuer's available funds will include the proceeds of the interest swap, the reserve fund, and, if necessary, principal received under the loans and any other proceeds received in connection with the loans. All interest and principal received can be mixed to pay principal and interest due under the notes in the following order:

- Senior fees (including the administration fee if Bankinter is substituted);
- Termination cost of the swap due to the fund;
- Interest on the class A notes;
- Interest on the class B notes;
- Interest on the class C notes;
- Principal on the notes;
- Interest on the class B notes, if postponed;
- Interest on the class C notes, if postponed;
- Reserve fund replenishment;
- Termination cost of the swap due to the counterparty;
- Interest on the start-up loan;
- Amortization of the start-up loan;
- Administration fee if Bankinter is the administrator; and
- The residual margin.

Amortization of the notes

Amortization will occur:

- For the class A notes, from the first payment date until fully amortized;
- For the class B notes, once the class A notes fully amortize; and
- For the class C notes, once the class A and B notes fully redeem.

The available amortization fund on each payment date will be equal to the balance of the capital repayment fund. The capital repayment fund, on each payment date, will be the difference between:

- The principal outstanding balance under all the series of notes; and
- The principal outstanding balance of all outstanding non-doubtful loans (no more than 18 months in arrears).

The conditions for the pro rata amortization of the class B and C notes are that they will amortize pro rata with the class A notes if:

- The ratio of the aggregate balance of delinquent loans to the aggregate balance of non-doubtful loans is below 1.50% for the class B notes and below 1.25% for the class C notes;
- The total outstanding principal balance of the class B and C notes represents at least 6.8% and 2.7% of the outstanding principal balance of all the notes, respectively;
- The cash reserve is at the required amount after the previous payment date; and
- The total outstanding balance of the non-doubtful loan portfolio is equal to or greater than 10% of the initial balance of the loan portfolio.

Interest deferral triggers

The interest on the class B and C notes will be subject to a deferral on a given payment date to a lower position in the waterfall:

- Class B note interest will be deferred if the cumulative gross default rate, as a percentage over the initial balance of the pool, exceeds 8%.
- Class C note interest will be deferred if the cumulative gross default rate, as a percentage over the initial balance of the pool, exceeds 5.65%.

Hedging Risk

Interest swap agreement

The interest rate swap agreement will mitigate any basis mismatch between the 12-month EURIBOR reference rate of loans in the pool, and the three-month EURIBOR reference rate on the notes. The interest rate swap provider will be Bankinter.

On each IPD, the issuer will pay the swap counterparty the reference index on the mortgage loans based on a notional amount of the performing principal balance of loans in the pool, plus the balance of all loans less than 18 months in arrears. In return, the issuer will receive note EURIBOR multiplied by the same notional balance.

The minimum rating required to be the swap counterparty is 'A-1', so if Bankinter is downgraded below 'A-1', we would expect Bankinter to take the remedy actions that follow an eligible direct support downgrade, as described in "*Revised Framework For Applying Counterparty And Supporting Party Criteria*" (see "*Criteria Referenced*").

Any counterparty replacement or guarantee will be subject to rating confirmation. The downgraded counterparty will bear all the costs of the remedies.

Credit Analysis

We stressed the transaction cash flows to test both the credit and liquidity support provided by the assets, subordinated tranches, cash reserve, and any external sources (such as a liquidity facility). We implemented these stresses to the cash flows at all relevant rating levels.

For example, we subject a transaction that incorporates 'AAA', 'A', and 'BBB' rated tranches of notes to three separate sets of cash flow stresses. In the 'AAA' stresses, all 'AAA' notes must pay full and timely principal and interest, but this will not necessarily be the case for the 'A' or 'BBB' rated tranches, as they are subordinated in the priority of payments. In the 'A' case, all 'AAA' and 'A' notes must receive full and timely principal and interest, but this is not necessarily so for the 'BBB' rated tranche, as it is subordinated to both 'AAA' and 'A'.

Amount of defaults and recoveries

For each loan in the pool, we estimated the likelihood that the borrower will default on its mortgage payments (the foreclosure frequency), and the amount of loss on the subsequent sale of the property (the loss severity, expressed as a percentage of the outstanding loan).

We assume the total mortgage balance to default. We determine the total amount of this defaulted balance that is not recovered for the entire pool by calculating the weighted-average foreclosure frequency (WAFF) and weighted-average loss severity (WALS).

The WAFF and WALS estimates increase as the required rating level increases, because the higher the rating required on the notes, the higher the level of mortgage default and loss severity they should be capable of withstanding. This credit analysis is based on the characteristics of the loans and the associated borrowers. We have applied market specific criteria in our assessment of the WAFF and the WALS for this portfolio, which are shown in table 3.

Rating level	WAFF (%)	WALS (%)
AAA	12.30	8.43
A	6.15	3.83
BBB	4.10	2.63

Timing of defaults

The WAFF at each rating level specifies the total balance of the mortgage loans assumed to default over the life of the transaction. We assume that these defaults occur over a three-year recession. Further, we assess the effect of the timing of this recession on the ability to repay the liabilities, and choose the recession start period based on this assessment.

Although the recession normally starts in the first month of the transaction, the 'AAA' recession is usually delayed by 12 months. We apply the WAFF to the principal balance outstanding at the start of the recession (e.g., in a 'AAA' scenario, we apply the WAFF to the balance at the beginning of month 13). We assume defaults occur periodically in amounts calculated as a percentage of the WAFF. The timing of defaults in Spanish transactions follows one path, referred to here as "equal" defaults. This timing is shown in table 4.

Percentage of WAFF	AAA (recession month)	Rest of rating scenarios (recession month)
1/3	13	1
1/3	25	13
1/3	37	25

Timing of recoveries

We assume that the issuer would regain any recoveries 30 months after a payment default in Spanish transactions. The value of recoveries at the 'AAA' level will be 100% minus the WALs given above.

Note that the WALs used in a cash flow model will always be based on principal loss, including costs. We assumed no recovery of any interest accrued on the mortgage loans during the foreclosure period. After the WAFF is applied to the balance of the mortgages, the asset balance is likely to be lower than that of the liabilities (a notable exception is when a transaction relies on overcollateralization). The interest reduction created by the defaulted mortgages during the foreclosure period will need to be covered by other structural mechanisms in the transaction.

Delinquencies

We model the liquidity stress that results from short-term delinquencies, i.e., those mortgages that cease to pay for a period of time but then recover and become current regarding both interest and principal. To simulate the effect of delinquencies, we assume a proportion of interest receipts equal to one-third of the WAFF to be delayed. We apply this in each month of the recession and assume full recovery of delinquent interest will occur 18 months after it is removed from the transaction. Thus, if in month five of the recession the total collateral interest expected to be received is €1 million and the WAFF is 30%, €100,000 of interest (one-third of the WAFF) will be delayed until month 23.

Interest and prepayment rates

We modeled one interest rate scenario—rising—using both high and low prepayment assumptions. Interest rates were 4.5% at the time of modeling and were modeled to rise by 2.0% a month to a high of 12.0% for EURIBOR amounts. In the 'AAA' scenario, the interest rate increase was not modeled to begin until month 13. Also note that we will revise interest rate scenarios if there is sufficient evidence to warrant it.

We stress transactions according to two prepayment assumptions, high (24.0%) and low (0.5%). In a 'AAA' scenario, we model a prepayment rate of 10% before the recession for the first year of the transaction for both the high and low prepayment scenarios, to ensure that the WAFF is applied to a consistent asset balance in month 13, when we assume the recession to start in the 'AAA' scenario.

We assume prepayment rates to be static throughout the life of the transaction and apply them monthly to the decreasing mortgage balance. We reserve the right to increase the high prepayment assumption if historical prepayment rates are high or the transaction is particularly sensitive to high prepayments (e.g., the transaction relies heavily on excess spread).

It should be noted that in a 'AAA' scenario we will model an expected prepayment rate of approximately 10% before the recession for the first year of the transaction. We apply this for both the low and high prepayment scenarios to ensure that the WAFF is applied to a consistent asset balance in month 13 (the 'AAA' scenario recession start month).

In combination, the default timings, interest rates, and prepayment rates described above give rise to two different scenarios (see table 5). The ratings we have assigned mean that the notes have all paid timely interest and ultimate principal under each of the scenarios at the proposed rating level.

Scenario	Prepayment rate	Interest rate	Default timing
1	Low	Up	Equal
2	High	Up	Equal

Sectoral Credit Highlights

It is a difficult time for the economies of Europe. But although the environment is difficult for the region as a whole, the ability of individual economies to withstand the conditions will depend on their current health in terms of household debt and savings, corporate debt, and international competitiveness. Against these yardsticks, we consider that Spain looks to be one of the most exposed to a pronounced slowdown.

This slowdown would be hardly surprising given the systemic economic problems affecting the region: The U.S. is on the brink of recession; the market disruption triggered by the subprime situation has dried up liquidity and made financial institutions far more reluctant to lend to households and corporates; and housing markets across Europe are easing back after years of spectacular growth, raising concerns for the construction sector and the jobs it has steadily generated in the past 10 years. Consumer price inflation is accelerating, curtailing real income growth. In addition, the euro exchange rate has risen to its highest level against the dollar since its launch in 1999.

From the consumers' standpoint, the new economic environment is characterized by falling asset prices (stocks and houses in most countries), accelerating retail price inflation, and more uncertainty regarding the employment outlook. Consumers' ability to spend in this new context depends in turn on their current level of indebtedness, the savings cushion they can draw on, and their real income growth prospects. Spain has seen a sharp increase in household debt over the past seven years, to 81% of GDP.

The second fundamental point to consider is the level of savings. When asset prices fall, households tend to raise their precautionary savings. The negative effects on consumer spending are likely to be stronger in economies where the overall level of personal savings was already historically low. Spain is interesting because the household savings rate, although trending down, still appears relatively high, at 9.9% in the third quarter of 2007 (10.2% a year earlier). This is because Spanish households continued to benefit from rapid growth in their overall disposable incomes (3.8%) last year, thanks to robust gains in pay (7.2%) on the back of strong employment and wage growth. But over the same 12 months to September 2007, the considerable volume of investment made by the household sector (up 4.5%) increased its overall financing needs to 6.8% of GDP—another sign of the current overleveraging of the Spanish personal sector.

We have revised our forecast for GDP growth in Spain this year to 1.8% from 2.3% (3.8% in 2007) and expect GDP growth to average 1.6% in 2009. The most recent data from the Spanish statistical office shows that in 2007, 61,500 jobs were lost in the construction sector and 46,400 in the service sector—the two main pillars of the Spanish economy. As a result, the unemployment rate surged to 8.6%. We expect housing starts to drop to about 400,000 this year from 600,000 in 2007, a trend that is likely to cause more job losses. The temptation to use part of the fiscal surplus (about 2.3% of GDP) will be strong and could provide a temporary boost aimed at avoiding a rise in unemployment on the back of a stumbling construction sector. The government just announced that 35,895 new jobs would be created in the public sector this year, an 8% increase over 2007.

Surveillance

Table 6 shows the main characteristics of the two last Bankinter transactions, which are similar to this one.

Table 6: Transaction Key Features			
	Bankinter 17	Bankinter 16	Bankinter 15
<i>Pool features</i>			
Principal outstanding (€)	1,232,487,715.66	2,207,285,247.45	1,970,168,421
Weighted-average seasoning (months)	22.7	22.2	20.5
Weighted-average LTV ratio (%)	53.71	62.09	58.04
Percentage with LTV ratios below 50%	39.78	27.68	29.66
Percentage with LTV ratios above 80%	5.1	13.01	0
Number of loans	10,052	16,036	9,148
Largest (€)	1,575,674.00	4,500,000	395,095
Average (€)	122,611.19	137,645	55,778
Weighted-average margin on the floating portfolio* (bps)	56	47	54
Percentage of commercial loans	6.54	8.63	0
Percentage of residential loans	93.46	91.37	100
Percentage of jumbo loans	7.94	10.17	9.97
Percentage of floating-rate loan	100	100	100
Percentage of fixed-rate loans	0	0	0
Weighted-average foreclosure period (months)	30	30	30
<i>Geographic distribution (%)</i>			
Andalucia	16.04	15.61	15.46
Aragon	1.53	2.09	1.45
Asturias	1.86	1.51	1.59
Balearic Islands	4.77	4.69	3.06
Basque Country	4.54	4.24	8
Canary Islands	5.34	4.65	4.65
Cantabria	2.23	1.38	1.98
Castilla-La Mancha	3.39	4.02	2.63
Castilla-Leon	3.93	2.84	3.56
Catalonia	12.96	17.21	15.53
Extremadura	0.99	0.95	0.51
Galicia	2.40	2.31	2.18
La Rioja	0.52	0.25	0.41
Madrid	17.14	23.47	21.19
Murcia	2.53	1.84	1.75
Navarra	0.51	0.88	0.17
Valencia	19.33	12.05	15.87
Others		0	0.01
<i>Structural features (%)</i>			
AAA	95.25	94.1	96.9
AA	—	2.3	1.05
A	3.4	—	—
A-	—	—	1.05
BBB	1.35	1.9	—
BB	—	1.7	—
BB-	—	—	1
Cash reserve (%)	2.3	2.15	1.7
Commingling sized as liquidity loss	NO	YES	YES
Commingling reserve if the administrator is downgraded	YES	NO	NO
<i>*Includes the optional loans that currently pay floating interest rates.</i>			

Criteria Referenced

- "Revised Framework For Applying Counterparty And Supporting Party Criteria" (published on May 8, 2007).
- "Cash Flow Criteria for European RMBS Transactions" (published on Nov. 20, 2003).
- "Methodology Behind European RMBS Indices" (published on Nov. 8, 2004).
- "European Legal Criteria for Structured Finance Transactions" (published on March 23, 2005).
- "Rating Affirmations And Their Impact On Investors" (published on April 20, 2005).

Related Articles

- "New Issue: Bankinter 16 Fondo de Titulización de Activos" (published on March 19, 2008)
- "European RMBS Outlook 2008—Market Disruptions May Overshadow Collateral Performance" (published on Jan. 31, 2008).
- "Assessment Of The Basel II Framework: Residential Mortgages" (published on Sept. 28, 2006).
- "European Banks Manage Capital Through Recent Mortgage Risk Transfers" (published on Dec. 9, 2005).
- "U.K. Home Repossessions Rise, But Remain Well Below 1990s Peak And Do Not Yet Threaten RMBS" (published on Nov. 10, 2005).
- "Sophistication Of Mortgage Credit Pricing To Benefit European RMBS" (published on Oct. 10, 2005).
- "Spanish RMBS Index Report" (published quarterly).
- "Scenario Analysis: Ratings On Junior Notes In Spanish RMBS Could Face Downgrades If Defaults Rise Rapidly" (published on April 1, 2008).

All criteria and related articles are available on RatingsDirect, the real-time Web-based source for our credit ratings, research, and risk analysis, at www.ratingsdirect.com. The criteria can also be found on our Web site at www.standardandpoors.com.

Key Contacts	
SF Investor Hotline	(44) 20-7176-3223
Client Support Europe	(44) 20-7176-7176
Press Office Hotline	(44) 20-7176-3605 or media_europe@standardandpoors.com
<i>Local media contact numbers</i>	
Paris	(33) 1-4420-6657
Frankfurt	(49) 69-33-999-225
Stockholm	(46) 8-440-5914
Moscow	(7) 495-783-4017

Published by Standard & Poor's, a Division of The McGraw-Hill Companies, Inc. Executive offices: 1221 Avenue of the Americas, New York, NY 10020. Editorial offices: 55 Water Street, New York, NY 10041. Subscriber services: (1) 212-438-7280. Copyright 2008 by The McGraw-Hill Companies, Inc. Reproduction in whole or in part prohibited except by permission. All rights reserved. Information has been obtained by Standard & Poor's from sources believed to be reliable. However, because of the possibility of human or mechanical error by our sources, Standard & Poor's or others, Standard & Poor's does not guarantee the accuracy, adequacy, or completeness of any information and is not responsible for any errors or omissions or the result obtained from the use of such information. Ratings are statements of opinion, not statements of fact or recommendations to buy, hold, or sell any securities.

Standard & Poor's uses billing and contact data collected from subscribers for billing and order fulfillment purposes, and occasionally to inform subscribers about products or services from Standard & Poor's, our parent, The McGraw-Hill Companies, and reputable third parties that may be of interest to them. All subscriber billing and contact data collected is stored in a secure database in the U.S. and access is limited to authorized persons. If you would prefer not to have your information used as outlined in this notice, if you wish to review your information for accuracy, or for more information on our privacy practices, please call us at (1) 212-438-7280 or write us at: privacy@standardandpoors.com. For more information about The McGraw-Hill Companies Privacy Policy please visit www.mcgraw-hill.com/privacy.html.

Analytic services provided by Standard & Poor's Ratings Services ("Ratings Services") are the result of separate activities designed to preserve the independence and objectivity of ratings opinions. Ratings are statements of opinion, not statements of fact or recommendations to buy, hold, or sell any securities. Ratings are based on information received by Ratings Services. Other divisions of Standard & Poor's may have information that is not available to Ratings Services. Standard & Poor's has established policies and procedures to maintain the confidentiality of non-public information received during the ratings process.

Ratings Services receives compensation for its ratings. Such compensation is normally paid either by the issuers of such securities or third parties participating in marketing the securities. While Standard & Poor's reserves the right to disseminate the rating, it receives no payment for doing so, except for subscriptions to its publications. Additional information about our ratings fees is available at www.standardandpoors.com/usratingsfees.

Permissions: To reprint, translate, or quote Standard & Poor's publications, contact: Client Services, 55 Water Street, New York, NY 10041; (1) 212-438-9823; or by e-mail to: research_request@standardandpoors.com.

The McGraw-Hill Companies