

# VALENCIA HIPOTECARIO 2 Fondo de Titulización Hipotecaria

## Cartera de Activos Titulizados / Portfolio of Securitised Assets

**Análisis de morosidad: Tasa de morosidad +3 meses**

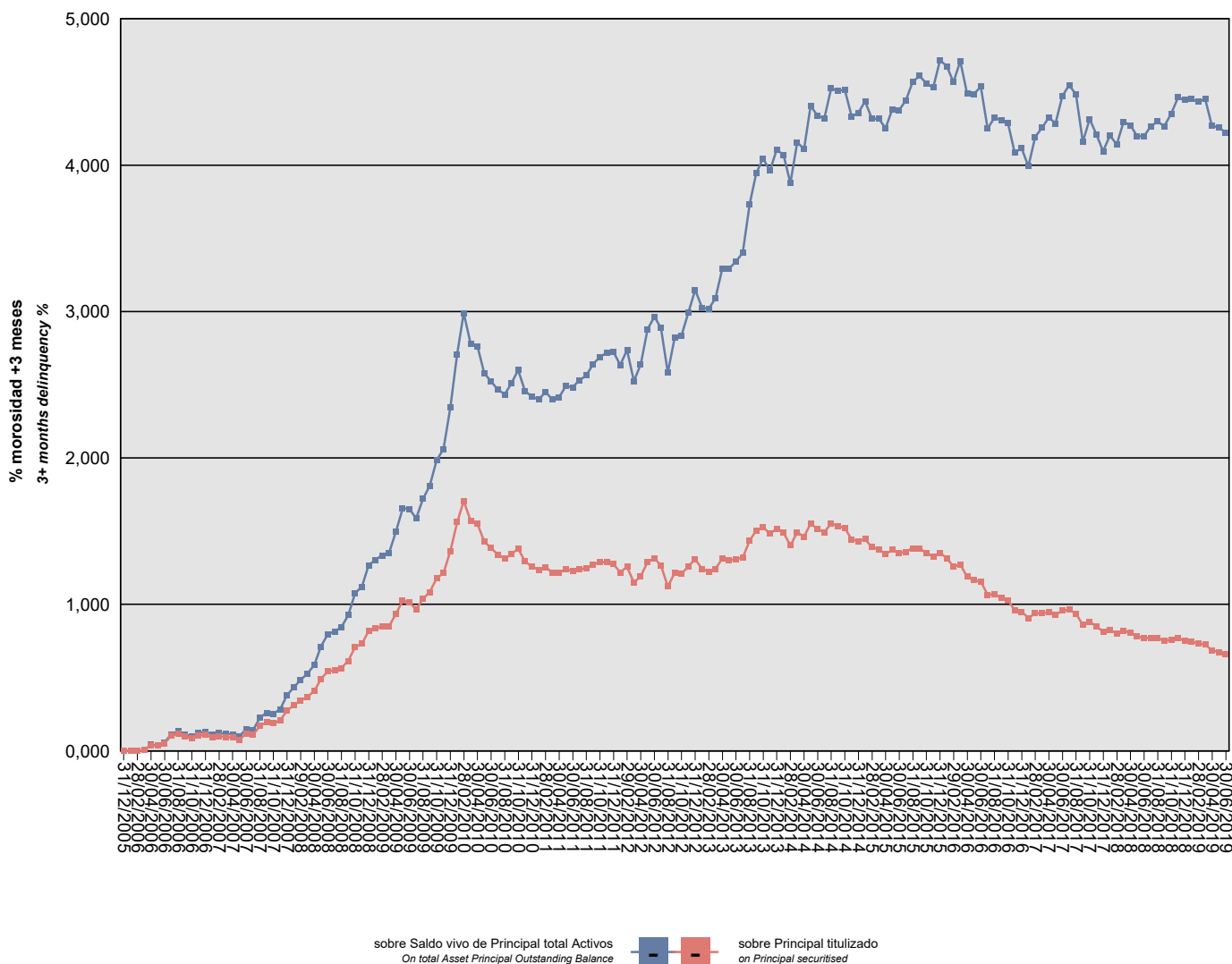
**Delinquency analysis: 3+ months delinquency rate**

**Activos / Assets: Préstamos hipotecarios vivienda (PHs) / Residential mortgage loans (MCs)**

**Fecha / Date: 30/06/2019**

**Divisa / Currency: EUR**

Esta serie histórica calculada a esta fecha puede diferir de las series históricas calculadas con anterioridad a consecuencia de cobros de los activos titulizados comunicados o modificados por el Administrador correspondiente con posterioridad a sus fechas de efectividad / This historical series calculated as at today's date may differ from previously calculated historical series following collections of the securitised assets communicated or modified by the relevant Servicer after their effective dates



## VALENCIA HIPOTECARIO 2 Fondo de Titulización Hipotecaria

### Cartera de Activos Titulizados / Portfolio of Securitised Assets

**Análisis de morosidad: Tasa de morosidad +3 meses**

**Delinquency analysis: 3+ months delinquency rate**

**Activos / Assets: Préstamos hipotecarios vivienda (PHs) / Residential mortgage loans (MCs)**

**Fecha / Date: 30/06/2019**

**Divisa / Currency: EUR**

Esta serie histórica calculada a esta fecha puede diferir de las series históricas calculadas con anterioridad a consecuencia de cobros de los activos titulizados comunicados o modificados por el Administrador correspondiente con posterioridad a sus fechas de efectividad / This historical series calculated as at today's date may differ from previously calculated historical series following collections of the securitised assets communicated or modified by the relevant Servicer after their effective dates

Fecha Date	Saldo vivo de Activos en mora (Ppal. Miles €) Delinquent Asset Outstanding Balance (€ thou. Principal)	% morosidad +3 meses 3+ months delinquency %	
		sobre Saldo vivo de Principal total Activos On total Asset Principal Outstanding Balance	sobre Principal titulado on Principal securitised
31/12/2005	0,000	0,00%	0,00%
31/01/2006	0,000	0,00%	0,00%
28/02/2006	0,000	0,00%	0,00%
31/03/2006	50,533	0,01%	0,01%
30/04/2006	354,530	0,04%	0,04%
31/05/2006	340,846	0,04%	0,04%
30/06/2006	479,890	0,06%	0,05%
31/07/2006	960,839	0,11%	0,10%
31/08/2006	1.103,936	0,13%	0,12%
30/09/2006	916,537	0,11%	0,10%
31/10/2006	801,609	0,10%	0,09%
30/11/2006	972,478	0,12%	0,10%
31/12/2006	1.020,220	0,13%	0,11%
31/01/2007	854,526	0,11%	0,09%
28/02/2007	922,444	0,12%	0,10%
31/03/2007	872,494	0,12%	0,09%
30/04/2007	849,782	0,11%	0,09%
31/05/2007	722,607	0,10%	0,08%
30/06/2007	1.089,974	0,15%	0,12%
31/07/2007	1.014,201	0,14%	0,11%
31/08/2007	1.605,349	0,23%	0,17%
30/09/2007	1.834,023	0,26%	0,20%
31/10/2007	1.764,397	0,25%	0,19%
30/11/2007	1.963,596	0,28%	0,21%
31/12/2007	2.582,621	0,38%	0,27%
31/01/2008	2.922,775	0,43%	0,31%
29/02/2008	3.227,851	0,48%	0,34%
31/03/2008	3.473,910	0,53%	0,37%
30/04/2008	3.842,973	0,59%	0,41%
31/05/2008	4.612,774	0,71%	0,49%
30/06/2008	5.106,356	0,80%	0,54%
31/07/2008	5.178,458	0,82%	0,55%
31/08/2008	5.323,081	0,85%	0,57%
30/09/2008	5.782,300	0,93%	0,61%
31/10/2008	6.662,669	1,08%	0,71%
30/11/2008	6.874,034	1,12%	0,73%
31/12/2008	7.686,309	1,27%	0,82%
31/01/2009	7.849,920	1,30%	0,83%
28/02/2009	7.980,208	1,34%	0,85%

## VALENCIA HIPOTECARIO 2 Fondo de Titulización Hipotecaria

### Cartera de Activos Titulizados / Portfolio of Securitised Assets

**Análisis de morosidad: Tasa de morosidad +3 meses**

**Delinquency analysis: 3+ months delinquency rate**

**Activos / Assets: Préstamos hipotecarios vivienda (PHs) / Residential mortgage loans (MCs)**

**Fecha / Date: 30/06/2019**

**Divisa / Currency: EUR**

Esta serie histórica calculada a esta fecha puede diferir de las series históricas calculadas con anterioridad a consecuencia de cobros de los activos titulizados comunicados o modificados por el Administrador correspondiente con posterioridad a sus fechas de efectividad / This historical series calculated as at today's date may differ from previously calculated historical series following collections of the securitised assets communicated or modified by the relevant Servicer after their effective dates

Fecha Date	Saldo vivo de Activos en mora (Ppal. Miles €) Delinquent Asset Outstanding Balance (€ thou. Principal)	% morosidad +3 meses 3+ months delinquency %	
		sobre Saldo vivo de Principal total Activos On total Asset Principal Outstanding Balance	sobre Principal titulado on Principal securitised
31/03/2009	8.002,889	1,35%	0,85%
30/04/2009	8.787,868	1,50%	0,93%
31/05/2009	9.636,891	1,66%	1,02%
30/06/2009	9.542,429	1,65%	1,01%
31/07/2009	9.075,211	1,59%	0,97%
31/08/2009	9.758,535	1,72%	1,04%
30/09/2009	10.195,803	1,81%	1,08%
31/10/2009	11.087,669	1,98%	1,18%
30/11/2009	11.417,997	2,06%	1,21%
31/12/2009	12.828,840	2,34%	1,36%
31/01/2010	14.675,681	2,71%	1,56%
28/02/2010	16.046,290	2,99%	1,71%
31/03/2010	14.777,609	2,78%	1,57%
30/04/2010	14.570,385	2,76%	1,55%
31/05/2010	13.452,085	2,58%	1,43%
30/06/2010	13.028,396	2,52%	1,39%
31/07/2010	12.600,617	2,47%	1,34%
31/08/2010	12.342,724	2,43%	1,31%
30/09/2010	12.617,889	2,51%	1,34%
31/10/2010	12.977,134	2,60%	1,38%
30/11/2010	12.158,308	2,46%	1,29%
31/12/2010	11.838,844	2,42%	1,26%
31/01/2011	11.630,071	2,40%	1,24%
28/02/2011	11.805,340	2,45%	1,26%
31/03/2011	11.436,173	2,40%	1,22%
30/04/2011	11.423,673	2,42%	1,21%
31/05/2011	11.679,909	2,49%	1,24%
30/06/2011	11.535,803	2,48%	1,23%
31/07/2011	11.662,677	2,53%	1,24%
31/08/2011	11.717,539	2,56%	1,25%
30/09/2011	11.975,212	2,64%	1,27%
31/10/2011	12.100,622	2,69%	1,29%
30/11/2011	12.103,191	2,72%	1,29%
31/12/2011	12.002,485	2,72%	1,28%
31/01/2012	11.458,317	2,64%	1,22%
29/02/2012	11.813,239	2,74%	1,26%
31/03/2012	10.810,681	2,52%	1,15%
30/04/2012	11.216,599	2,64%	1,19%
31/05/2012	12.127,608	2,88%	1,29%

## VALENCIA HIPOTECARIO 2 Fondo de Titulización Hipotecaria

### Cartera de Activos Titulizados / Portfolio of Securitized Assets

**Análisis de morosidad: Tasa de morosidad +3 meses**

**Delinquency analysis: 3+ months delinquency rate**

**Activos / Assets: Préstamos hipotecarios vivienda (PHs) / Residential mortgage loans (MCs)**

**Fecha / Date: 30/06/2019**

**Divisa / Currency: EUR**

Esta serie histórica calculada a esta fecha puede diferir de las series históricas calculadas con anterioridad a consecuencia de cobros de los activos titulizados comunicados o modificados por el Administrador correspondiente con posterioridad a sus fechas de efectividad / This historical series calculated as at today's date may differ from previously calculated historical series following collections of the securitised assets communicated or modified by the relevant Servicer after their effective dates

Fecha Date	Saldo vivo de Activos en mora (Ppal. Miles €) Delinquent Asset Outstanding Balance (€ thou. Principal)	% morosidad +3 meses 3+ months delinquency %	
		sobre Saldo vivo de Principal total Activos On total Asset Principal Outstanding Balance	sobre Principal titulado on Principal securitised
30/06/2012	12.370,325	2,96%	1,32%
31/07/2012	11.912,166	2,89%	1,27%
31/08/2012	10.554,000	2,58%	1,12%
30/09/2012	11.427,391	2,82%	1,22%
31/10/2012	11.372,664	2,84%	1,21%
30/11/2012	11.854,917	2,99%	1,26%
31/12/2012	12.300,225	3,15%	1,31%
31/01/2013	11.679,883	3,03%	1,24%
28/02/2013	11.520,247	3,02%	1,23%
31/03/2013	11.680,303	3,09%	1,24%
30/04/2013	12.341,720	3,29%	1,31%
31/05/2013	12.231,246	3,29%	1,30%
30/06/2013	12.300,872	3,34%	1,31%
31/07/2013	12.414,560	3,40%	1,32%
31/08/2013	13.494,441	3,73%	1,44%
30/09/2013	14.138,570	3,94%	1,50%
31/10/2013	14.369,167	4,05%	1,53%
30/11/2013	13.937,990	3,96%	1,48%
31/12/2013	14.268,948	4,10%	1,52%
31/01/2014	14.013,080	4,07%	1,49%
28/02/2014	13.196,082	3,88%	1,40%
31/03/2014	14.023,864	4,15%	1,49%
30/04/2014	13.750,800	4,11%	1,46%
31/05/2014	14.595,724	4,41%	1,55%
30/06/2014	14.252,356	4,34%	1,52%
31/07/2014	14.049,122	4,32%	1,49%
31/08/2014	14.595,105	4,52%	1,55%
30/09/2014	14.426,843	4,51%	1,53%
31/10/2014	14.309,025	4,51%	1,52%
30/11/2014	13.564,446	4,33%	1,44%
31/12/2014	13.473,106	4,36%	1,43%
31/01/2015	13.592,196	4,44%	1,45%
28/02/2015	13.072,281	4,32%	1,39%
31/03/2015	12.943,253	4,32%	1,38%
30/04/2015	12.634,207	4,25%	1,34%
31/05/2015	12.897,669	4,38%	1,37%
30/06/2015	12.712,135	4,38%	1,35%
31/07/2015	12.776,768	4,44%	1,36%
31/08/2015	13.015,597	4,57%	1,38%

## VALENCIA HIPOTECARIO 2 Fondo de Titulización Hipotecaria

### Cartera de Activos Titulizados / Portfolio of Securitised Assets

**Análisis de morosidad: Tasa de morosidad +3 meses**

**Delinquency analysis: 3+ months delinquency rate**

**Activos / Assets: Préstamos hipotecarios vivienda (PHs) / Residential mortgage loans (MCs)**

**Fecha / Date: 30/06/2019**

**Divisa / Currency: EUR**

Esta serie histórica calculada a esta fecha puede diferir de las series históricas calculadas con anterioridad a consecuencia de cobros de los activos titulizados comunicados o modificados por el Administrador correspondiente con posterioridad a sus fechas de efectividad / This historical series calculated as at today's date may differ from previously calculated historical series following collections of the securitised assets communicated or modified by the relevant Servicer after their effective dates

Fecha Date	Saldo vivo de Activos en mora (Ppal. Miles €) Delinquent Asset Outstanding Balance (€ thou. Principal)	% morosidad +3 meses 3+ months delinquency %	
		sobre Saldo vivo de Principal total Activos On total Asset Principal Outstanding Balance	sobre Principal titulado on Principal securitised
30/09/2015	12.996,277	4,61%	1,38%
31/10/2015	12.701,107	4,56%	1,35%
30/11/2015	12.477,458	4,53%	1,33%
31/12/2015	12.724,109	4,72%	1,35%
31/01/2016	12.363,056	4,67%	1,31%
29/02/2016	11.821,304	4,57%	1,26%
31/03/2016	11.977,617	4,71%	1,27%
30/04/2016	11.174,918	4,49%	1,19%
31/05/2016	10.960,177	4,49%	1,17%
30/06/2016	10.881,905	4,54%	1,16%
31/07/2016	10.014,460	4,25%	1,07%
31/08/2016	10.056,591	4,33%	1,07%
30/09/2016	9.842,271	4,31%	1,05%
31/10/2016	9.681,837	4,29%	1,03%
30/11/2016	9.037,176	4,09%	0,96%
31/12/2016	8.936,968	4,12%	0,95%
31/01/2017	8.526,228	3,99%	0,91%
28/02/2017	8.835,642	4,19%	0,94%
31/03/2017	8.845,097	4,26%	0,94%
30/04/2017	8.904,898	4,33%	0,95%
31/05/2017	8.722,575	4,28%	0,93%
30/06/2017	9.007,284	4,47%	0,96%
31/07/2017	9.051,322	4,55%	0,96%
31/08/2017	8.819,150	4,48%	0,94%
30/09/2017	8.082,913	4,16%	0,86%
31/10/2017	8.301,416	4,32%	0,88%
30/11/2017	7.981,413	4,21%	0,85%
31/12/2017	7.656,129	4,09%	0,81%
31/01/2018	7.760,206	4,20%	0,83%
28/02/2018	7.540,065	4,14%	0,80%
31/03/2018	7.708,675	4,29%	0,82%
30/04/2018	7.584,856	4,27%	0,81%
31/05/2018	7.335,945	4,20%	0,78%
30/06/2018	7.242,399	4,20%	0,77%
31/07/2018	7.255,982	4,26%	0,77%
31/08/2018	7.229,019	4,30%	0,77%
30/09/2018	7.095,353	4,27%	0,75%
31/10/2018	7.131,247	4,35%	0,76%
30/11/2018	7.218,902	4,46%	0,77%

## VALENCIA HIPOTECARIO 2 Fondo de Titulización Hipotecaria

### Cartera de Activos Titulizados / Portfolio of Securitised Assets

Análisis de morosidad: Tasa de morosidad +3 meses

Delinquency analysis: 3+ months delinquency rate

Activos / Assets: Préstamos hipotecarios vivienda (PHs) / Residential mortgage loans (MCs)

Fecha / Date: 30/06/2019

Divisa / Currency: EUR

Esta serie histórica calculada a esta fecha puede diferir de las series históricas calculadas con anterioridad a consecuencia de cobros de los activos titulizados comunicados o modificados por el Administrador correspondiente con posterioridad a sus fechas de efectividad / This historical series calculated as at today's date may differ from previously calculated historical series following collections of the securitised assets communicated or modified by the relevant Servicer after their effective dates

Fecha Date	Saldo vivo de Activos en mora (Ppal. Miles €) Delinquent Asset Outstanding Balance (€ thou. Principal)	% morosidad +3 meses 3+ months delinquency %	
		sobre Saldo vivo de Principal total Activos On total Asset Principal Outstanding Balance	sobre Principal titulado on Principal securitised
31/12/2018	7.088,051	4,44%	0,75%
31/01/2019	7.004,693	4,45%	0,74%
28/02/2019	6.880,778	4,43%	0,73%
31/03/2019	6.820,227	4,45%	0,73%
30/04/2019	6.452,861	4,27%	0,69%
31/05/2019	6.348,631	4,26%	0,68%
30/06/2019	6.211,045	4,22%	0,66%