

VALENCIA HIPOTECARIO 3 Fondo de Titulización de Activos

Cartera de Activos Titulizados / Portfolio of Securitised Assets

Análisis de morosidad: Tasa de morosidad +3 meses

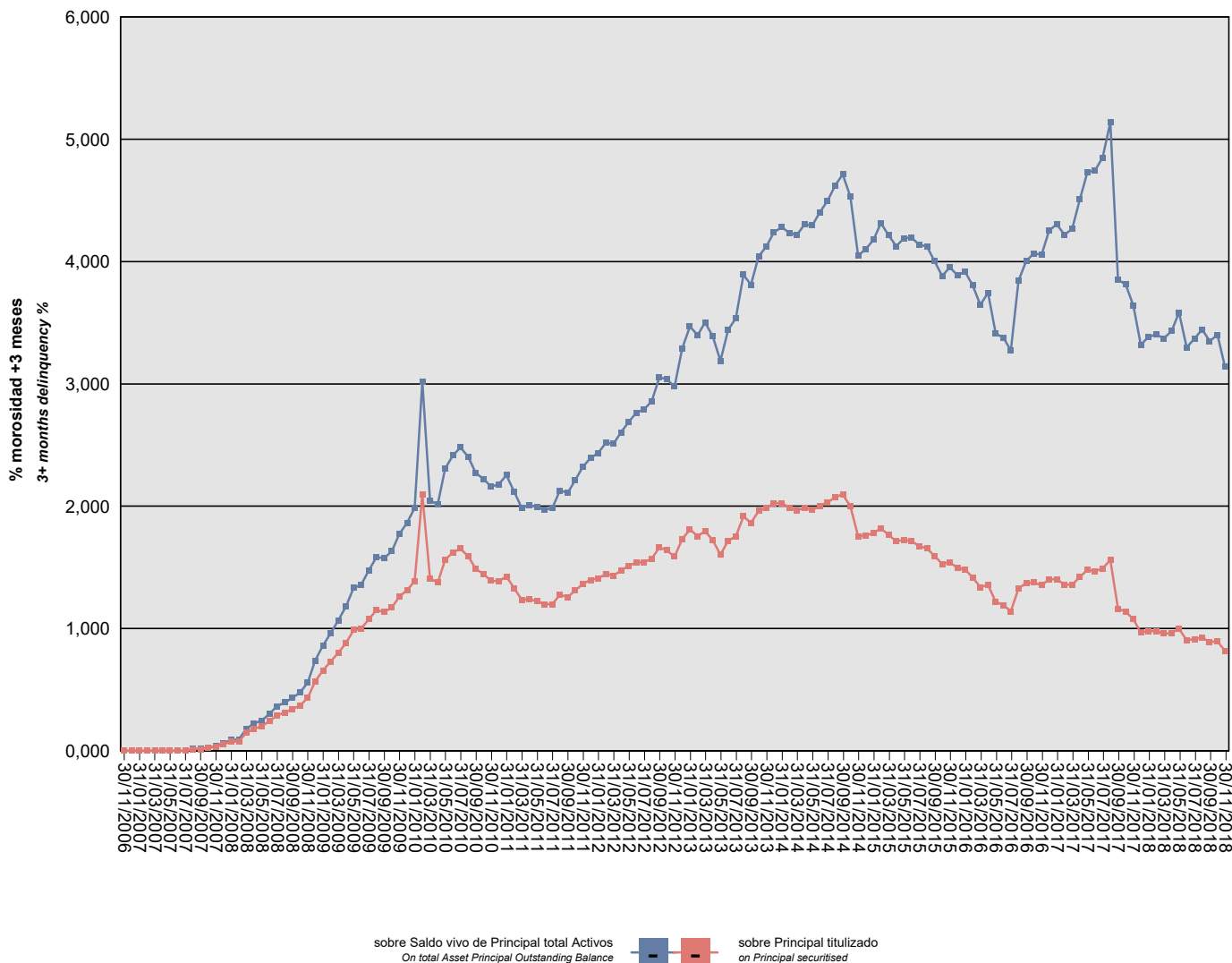
Delinquency analysis: 3+ months delinquency rate

Activos / Assets: Préstamos hipotecarios vivienda (CTHs) / Residential mortgage loans (PTCs)

Fecha / Date: 30/11/2018

Divisa / Currency: EUR

Esta serie histórica calculada a esta fecha puede diferir de las series históricas calculadas con anterioridad a consecuencia de cobros de los activos titulizados comunicados o modificados por el Administrador correspondiente con posterioridad a sus fechas de efectividad / This historical series calculated as at today's date may differ from previously calculated historical series following collections of the securitised assets communicated or modified by the relevant Servicer after their effective dates



VALENCIA HIPOTECARIO 3 Fondo de Titulización de Activos

Cartera de Activos Titulizados / Portfolio of Securitised Assets

Análisis de morosidad: Tasa de morosidad +3 meses

Delinquency analysis: 3+ months delinquency rate

Activos / Assets: Préstamos hipotecarios vivienda (CTHs) / Residential mortgage loans (PTCs)

Fecha / Date: 30/11/2018

Divisa / Currency: EUR

Esta serie histórica calculada a esta fecha puede diferir de las series históricas calculadas con anterioridad a consecuencia de cobros de los activos titulizados comunicados o modificados por el Administrador correspondiente con posterioridad a sus fechas de efectividad / This historical series calculated as at today's date may differ from previously calculated historical series following collections of the securitised assets communicated or modified by the relevant Servicer after their effective dates

Fecha Date	Saldo vivo de Activos en mora (Ppal. Miles €) Delinquent Asset Outstanding Balance (€ thou. Principal)	% morosidad +3 meses 3+ months delinquency %	
		sobre Saldo vivo de Principal total Activos On total Asset Principal Outstanding Balance	sobre Principal titulado on Principal securitised
30/11/2006	0,000	0,00%	0,00%
31/12/2006	0,000	0,00%	0,00%
31/01/2007	0,000	0,00%	0,00%
28/02/2007	0,000	0,00%	0,00%
31/03/2007	0,000	0,00%	0,00%
30/04/2007	0,000	0,00%	0,00%
31/05/2007	0,000	0,00%	0,00%
30/06/2007	0,000	0,00%	0,00%
31/07/2007	0,000	0,00%	0,00%
31/08/2007	119,021	0,01%	0,01%
30/09/2007	119,021	0,02%	0,01%
31/10/2007	217,459	0,03%	0,02%
30/11/2007	283,604	0,04%	0,03%
31/12/2007	472,775	0,06%	0,05%
31/01/2008	661,683	0,09%	0,07%
29/02/2008	695,610	0,09%	0,08%
31/03/2008	1.353,676	0,18%	0,15%
30/04/2008	1.642,646	0,22%	0,18%
31/05/2008	1.808,573	0,25%	0,20%
30/06/2008	2.182,542	0,30%	0,24%
31/07/2008	2.610,464	0,36%	0,29%
31/08/2008	2.816,695	0,39%	0,31%
30/09/2008	3.067,246	0,43%	0,34%
31/10/2008	3.349,710	0,48%	0,37%
30/11/2008	3.891,339	0,56%	0,43%
31/12/2008	5.110,101	0,74%	0,57%
31/01/2009	5.905,305	0,86%	0,66%
28/02/2009	6.559,528	0,96%	0,73%
31/03/2009	7.211,004	1,07%	0,80%
30/04/2009	7.935,766	1,18%	0,88%
31/05/2009	8.889,136	1,33%	0,99%
30/06/2009	8.982,356	1,35%	1,00%
31/07/2009	9.692,643	1,47%	1,08%
31/08/2009	10.349,881	1,58%	1,15%
30/09/2009	10.234,188	1,57%	1,14%
31/10/2009	10.545,757	1,63%	1,17%
30/11/2009	11.356,348	1,77%	1,26%
31/12/2009	11.824,311	1,86%	1,31%
31/01/2010	12.491,854	1,98%	1,39%

VALENCIA HIPOTECARIO 3 Fondo de Titulización de Activos

Cartera de Activos Titulizados / Portfolio of Securitized Assets

Análisis de morosidad: Tasa de morosidad +3 meses

Delinquency analysis: 3+ months delinquency rate

Activos / Assets: Préstamos hipotecarios vivienda (CTHs) / Residential mortgage loans (PTCs)

Fecha / Date: 30/11/2018

Divisa / Currency: EUR

Esta serie histórica calculada a esta fecha puede diferir de las series históricas calculadas con anterioridad a consecuencia de cobros de los activos titulizados comunicados o modificados por el Administrador correspondiente con posterioridad a sus fechas de efectividad / This historical series calculated as at today's date may differ from previously calculated historical series following collections of the securitized assets communicated or modified by the relevant Servicer after their effective dates

Fecha Date	Saldo vivo de Activos en mora (Ppal. Miles €) Delinquent Asset Outstanding Balance (€ thou. Principal)	% morosidad +3 meses 3+ months delinquency %	
		sobre Saldo vivo de Principal total Activos On total Asset Principal Outstanding Balance	sobre Principal titulado on Principal securitised
28/02/2010	18.876,522	3,02%	2,10%
31/03/2010	12.693,938	2,05%	1,41%
30/04/2010	12.383,715	2,01%	1,37%
31/05/2010	14.069,523	2,31%	1,56%
30/06/2010	14.605,936	2,41%	1,62%
31/07/2010	14.889,040	2,48%	1,65%
31/08/2010	14.318,731	2,40%	1,59%
30/09/2010	13.379,311	2,27%	1,49%
31/10/2010	13.000,616	2,22%	1,44%
30/11/2010	12.531,798	2,16%	1,39%
31/12/2010	12.489,677	2,18%	1,39%
31/01/2011	12.834,427	2,25%	1,42%
28/02/2011	11.974,439	2,12%	1,33%
31/03/2011	11.104,534	1,99%	1,23%
30/04/2011	11.168,414	2,01%	1,24%
31/05/2011	11.013,107	1,99%	1,22%
30/06/2011	10.791,959	1,97%	1,20%
31/07/2011	10.789,380	1,99%	1,20%
31/08/2011	11.499,232	2,13%	1,28%
30/09/2011	11.328,736	2,11%	1,26%
31/10/2011	11.798,134	2,21%	1,31%
30/11/2011	12.302,270	2,32%	1,37%
31/12/2011	12.578,782	2,39%	1,40%
31/01/2012	12.692,668	2,44%	1,41%
29/02/2012	13.028,239	2,52%	1,45%
31/03/2012	12.901,672	2,51%	1,43%
30/04/2012	13.288,217	2,60%	1,48%
31/05/2012	13.617,781	2,69%	1,51%
30/06/2012	13.881,175	2,77%	1,54%
31/07/2012	13.899,373	2,79%	1,54%
31/08/2012	14.138,563	2,86%	1,57%
30/09/2012	14.999,407	3,06%	1,67%
31/10/2012	14.765,667	3,04%	1,64%
30/11/2012	14.303,432	2,98%	1,59%
31/12/2012	15.608,767	3,29%	1,73%
31/01/2013	16.289,467	3,47%	1,81%
28/02/2013	15.806,358	3,40%	1,75%
31/03/2013	16.161,199	3,50%	1,79%
30/04/2013	15.512,217	3,39%	1,72%

VALENCIA HIPOTECARIO 3 Fondo de Titulización de Activos

Cartera de Activos Titulizados / Portfolio of Securitised Assets

Análisis de morosidad: Tasa de morosidad +3 meses

Delinquency analysis: 3+ months delinquency rate

Activos / Assets: Préstamos hipotecarios vivienda (CTHs) / Residential mortgage loans (PTCs)

Fecha / Date: 30/11/2018

Divisa / Currency: EUR

Esta serie histórica calculada a esta fecha puede diferir de las series históricas calculadas con anterioridad a consecuencia de cobros de los activos titulizados comunicados o modificados por el Administrador correspondiente con posterioridad a sus fechas de efectividad / This historical series calculated as at today's date may differ from previously calculated historical series following collections of the securitised assets communicated or modified by the relevant Servicer after their effective dates

Fecha Date	Saldo vivo de Activos en mora (Ppal. Miles €) Delinquent Asset Outstanding Balance (€ thou. Principal)	% morosidad +3 meses 3+ months delinquency %	
		sobre Saldo vivo de Principal total Activos On total Asset Principal Outstanding Balance	sobre Principal titulado on Principal securitised
31/05/2013	14.444,852	3,19%	1,60%
30/06/2013	15.473,291	3,44%	1,72%
31/07/2013	15.784,911	3,54%	1,75%
31/08/2013	17.263,650	3,89%	1,92%
30/09/2013	16.789,560	3,81%	1,86%
31/10/2013	17.664,771	4,04%	1,96%
30/11/2013	17.895,284	4,12%	1,99%
31/12/2013	18.226,787	4,24%	2,02%
31/01/2014	18.247,602	4,28%	2,03%
28/02/2014	17.905,954	4,23%	1,99%
31/03/2014	17.693,582	4,22%	1,96%
30/04/2014	17.898,748	4,30%	1,99%
31/05/2014	17.726,813	4,30%	1,97%
30/06/2014	18.042,304	4,40%	2,00%
31/07/2014	18.286,230	4,50%	2,03%
31/08/2014	18.672,046	4,62%	2,07%
30/09/2014	18.883,574	4,71%	2,10%
31/10/2014	17.997,387	4,53%	2,00%
30/11/2014	15.811,501	4,05%	1,76%
31/12/2014	15.866,054	4,10%	1,76%
31/01/2015	16.016,131	4,18%	1,78%
28/02/2015	16.396,375	4,32%	1,82%
31/03/2015	15.895,777	4,22%	1,76%
30/04/2015	15.434,290	4,12%	1,71%
31/05/2015	15.543,955	4,19%	1,73%
30/06/2015	15.437,072	4,20%	1,71%
31/07/2015	15.069,893	4,14%	1,67%
31/08/2015	14.902,023	4,12%	1,65%
30/09/2015	14.348,504	4,00%	1,59%
31/10/2015	13.771,634	3,88%	1,53%
30/11/2015	13.897,319	3,95%	1,54%
31/12/2015	13.457,925	3,89%	1,49%
31/01/2016	13.365,046	3,92%	1,48%
29/02/2016	12.747,901	3,81%	1,42%
31/03/2016	12.052,597	3,65%	1,34%
30/04/2016	12.205,294	3,74%	1,36%
31/05/2016	10.958,560	3,41%	1,22%
30/06/2016	10.733,699	3,38%	1,19%
31/07/2016	10.266,023	3,27%	1,14%

VALENCIA HIPOTECARIO 3 Fondo de Titulización de Activos

Cartera de Activos Titulizados / Portfolio of Securitised Assets

Análisis de morosidad: Tasa de morosidad +3 meses

Delinquency analysis: 3+ months delinquency rate

Activos / Assets: Préstamos hipotecarios vivienda (CTHs) / Residential mortgage loans (PTCs)

Fecha / Date: 30/11/2018

Divisa / Currency: EUR

Esta serie histórica calculada a esta fecha puede diferir de las series históricas calculadas con anterioridad a consecuencia de cobros de los activos titulizados comunicados o modificados por el Administrador correspondiente con posterioridad a sus fechas de efectividad / This historical series calculated as at today's date may differ from previously calculated historical series following collections of the securitised assets communicated or modified by the relevant Servicer after their effective dates

Fecha Date	Saldo vivo de Activos en mora (Ppal. Miles €) Delinquent Asset Outstanding Balance (€ thou. Principal)	% morosidad +3 meses 3+ months delinquency %	
		sobre Saldo vivo de Principal total Activos On total Asset Principal Outstanding Balance	sobre Principal titulado on Principal securitised
31/08/2016	11.964,382	3,84%	1,33%
30/09/2016	12.346,347	4,01%	1,37%
31/10/2016	12.384,018	4,07%	1,37%
30/11/2016	12.212,493	4,06%	1,36%
31/12/2016	12.611,191	4,25%	1,40%
31/01/2017	12.642,026	4,31%	1,40%
28/02/2017	12.231,019	4,22%	1,36%
31/03/2017	12.240,438	4,27%	1,36%
30/04/2017	12.810,850	4,51%	1,42%
31/05/2017	13.318,684	4,73%	1,48%
30/06/2017	13.232,759	4,74%	1,47%
31/07/2017	13.408,572	4,85%	1,49%
31/08/2017	14.072,726	5,14%	1,56%
30/09/2017	10.458,206	3,85%	1,16%
31/10/2017	10.250,881	3,81%	1,14%
30/11/2017	9.679,354	3,64%	1,07%
31/12/2017	8.723,608	3,32%	0,97%
31/01/2018	8.816,909	3,38%	0,98%
28/02/2018	8.789,088	3,40%	0,98%
31/03/2018	8.626,951	3,37%	0,96%
30/04/2018	8.682,346	3,43%	0,96%
31/05/2018	8.979,798	3,58%	1,00%
30/06/2018	8.148,448	3,30%	0,90%
31/07/2018	8.222,723	3,37%	0,91%
31/08/2018	8.338,842	3,44%	0,93%
30/09/2018	8.022,759	3,35%	0,89%
31/10/2018	8.063,786	3,40%	0,90%
30/11/2018	7.361,005	3,14%	0,82%