

BBVA RMBS 3 Fondo de Titulización de Activos

Cartera de Activos Titulizados / Portfolio of Securitised Assets

Análisis de morosidad: Tasa de morosidad +3 meses

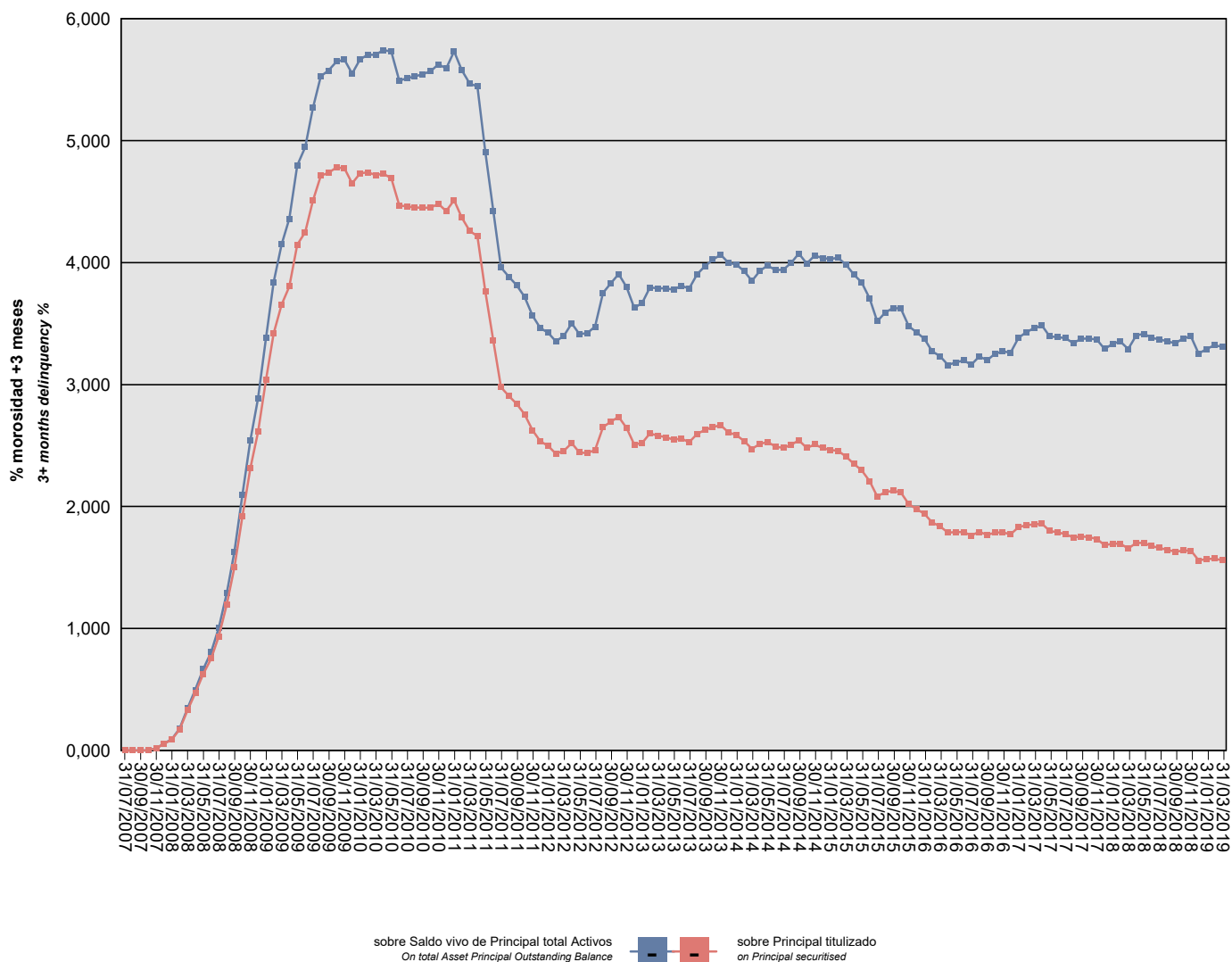
Delinquency analysis: 3+ months delinquency rate

Activos / Assets: Préstamos hipotecarios vivienda (CTHs) / Residential mortgage loans (PTCs)

Fecha / Date: 31/03/2019

Divisa / Currency: EUR

Esta serie histórica calculada a esta fecha puede diferir de las series históricas calculadas con anterioridad a consecuencia de cobros de los activos titulizados comunicados o modificados por el Administrador correspondiente con posterioridad a sus fechas de efectividad / This historical series calculated as at today's date may differ from previously calculated historical series following collections of the securitised assets communicated or modified by the relevant Servicer after their effective dates



BBVA RMBS 3 Fondo de Titulización de Activos

Cartera de Activos Titulizados / Portfolio of Securitized Assets

Análisis de morosidad: Tasa de morosidad +3 meses

Delinquency analysis: 3+ months delinquency rate

Activos / Assets: Préstamos hipotecarios vivienda (CTHs) / Residential mortgage loans (PTCs)

Fecha / Date: 31/03/2019

Divisa / Currency: EUR

Esta serie histórica calculada a esta fecha puede diferir de las series históricas calculadas con anterioridad a consecuencia de cobros de los activos titulizados comunicados o modificados por el Administrador correspondiente con posterioridad a sus fechas de efectividad / This historical series calculated as at today's date may differ from previously calculated historical series following collections of the securitized assets communicated or modified by the relevant Servicer after their effective dates

Fecha Date	Saldo vivo de Activos en mora (Ppal. Miles €) Delinquent Asset Outstanding Balance (€ thou. Principal)	% morosidad +3 meses 3+ months delinquency %	
		sobre Saldo vivo de Principal total Activos On total Asset Principal Outstanding Balance	sobre Principal titulado on Principal securitised
31/07/2007	0,000	0,00%	0,00%
31/08/2007	0,000	0,00%	0,00%
30/09/2007	0,000	0,00%	0,00%
31/10/2007	0,000	0,00%	0,00%
30/11/2007	520,031	0,02%	0,02%
31/12/2007	1.632,131	0,06%	0,05%
31/01/2008	2.708,180	0,09%	0,09%
29/02/2008	5.173,158	0,18%	0,17%
31/03/2008	9.874,831	0,35%	0,33%
30/04/2008	14.095,467	0,50%	0,47%
31/05/2008	18.786,330	0,67%	0,63%
30/06/2008	22.605,216	0,81%	0,75%
31/07/2008	28.095,582	1,01%	0,94%
31/08/2008	35.867,915	1,29%	1,20%
30/09/2008	45.121,670	1,63%	1,50%
31/10/2008	57.599,589	2,10%	1,92%
30/11/2008	69.400,543	2,54%	2,31%
31/12/2008	78.349,607	2,89%	2,61%
31/01/2009	91.137,840	3,38%	3,04%
28/02/2009	102.568,891	3,84%	3,42%
31/03/2009	109.661,215	4,15%	3,66%
30/04/2009	114.120,728	4,36%	3,80%
31/05/2009	124.436,207	4,80%	4,15%
30/06/2009	127.502,205	4,95%	4,25%
31/07/2009	135.243,102	5,27%	4,51%
31/08/2009	141.395,076	5,53%	4,71%
30/09/2009	142.108,121	5,57%	4,74%
31/10/2009	143.442,704	5,65%	4,78%
30/11/2009	143.225,453	5,66%	4,77%
31/12/2009	139.469,500	5,55%	4,65%
31/01/2010	141.952,842	5,67%	4,73%
28/02/2010	142.207,575	5,70%	4,74%
31/03/2010	141.527,156	5,71%	4,72%
30/04/2010	141.848,965	5,74%	4,73%
31/05/2010	140.758,289	5,73%	4,69%
30/06/2010	134.075,178	5,49%	4,47%
31/07/2010	133.816,459	5,51%	4,46%
31/08/2010	133.624,223	5,53%	4,45%
30/09/2010	133.470,437	5,55%	4,45%

BBVA RMBS 3 Fondo de Titulización de Activos

Cartera de Activos Titulizados / Portfolio of Securitized Assets

Análisis de morosidad: Tasa de morosidad +3 meses

Delinquency analysis: 3+ months delinquency rate

Activos / Assets: Préstamos hipotecarios vivienda (CTHs) / Residential mortgage loans (PTCs)

Fecha / Date: 31/03/2019

Divisa / Currency: EUR

Esta serie histórica calculada a esta fecha puede diferir de las series históricas calculadas con anterioridad a consecuencia de cobros de los activos titulizados comunicados o modificados por el Administrador correspondiente con posterioridad a sus fechas de efectividad / This historical series calculated as at today's date may differ from previously calculated historical series following collections of the securitized assets communicated or modified by the relevant Servicer after their effective dates

Fecha Date	Saldo vivo de Activos en mora (Ppal. Miles €) Delinquent Asset Outstanding Balance (€ thou. Principal)	% morosidad +3 meses 3+ months delinquency %	
		sobre Saldo vivo de Principal total Activos On total Asset Principal Outstanding Balance	sobre Principal titulado on Principal securitised
31/10/2010	133.503,704	5,57%	4,45%
30/11/2010	134.423,270	5,63%	4,48%
31/12/2010	132.656,366	5,59%	4,42%
31/01/2011	135.354,916	5,73%	4,51%
28/02/2011	131.057,748	5,58%	4,37%
31/03/2011	127.777,050	5,47%	4,26%
30/04/2011	126.546,995	5,45%	4,22%
31/05/2011	112.831,965	4,90%	3,76%
30/06/2011	100.804,028	4,42%	3,36%
31/07/2011	89.365,692	3,96%	2,98%
31/08/2011	87.170,045	3,88%	2,91%
30/09/2011	85.285,049	3,82%	2,84%
31/10/2011	82.644,811	3,72%	2,75%
30/11/2011	78.782,488	3,57%	2,63%
31/12/2011	76.067,617	3,46%	2,54%
31/01/2012	74.891,227	3,42%	2,50%
29/02/2012	72.996,636	3,35%	2,43%
31/03/2012	73.702,117	3,40%	2,46%
30/04/2012	75.604,417	3,50%	2,52%
31/05/2012	73.313,536	3,41%	2,44%
30/06/2012	73.157,409	3,42%	2,44%
31/07/2012	73.894,446	3,48%	2,46%
31/08/2012	79.517,294	3,75%	2,65%
30/09/2012	80.823,026	3,83%	2,69%
31/10/2012	82.056,456	3,91%	2,74%
30/11/2012	79.327,794	3,80%	2,64%
31/12/2012	75.250,869	3,63%	2,51%
31/01/2013	75.695,123	3,67%	2,52%
28/02/2013	77.979,025	3,80%	2,60%
31/03/2013	77.451,019	3,79%	2,58%
30/04/2013	77.050,540	3,79%	2,57%
31/05/2013	76.436,757	3,78%	2,55%
30/06/2013	76.688,986	3,81%	2,56%
31/07/2013	75.817,150	3,79%	2,53%
31/08/2013	77.853,821	3,90%	2,60%
30/09/2013	78.815,075	3,97%	2,63%
31/10/2013	79.530,806	4,02%	2,65%
30/11/2013	80.009,110	4,07%	2,67%
31/12/2013	78.241,757	4,00%	2,61%

BBVA RMBS 3 Fondo de Titulización de Activos

Cartera de Activos Titulizados / Portfolio of Securitised Assets

Análisis de morosidad: Tasa de morosidad +3 meses

Delinquency analysis: 3+ months delinquency rate

Activos / Assets: Préstamos hipotecarios vivienda (CTHs) / Residential mortgage loans (PTCs)

Fecha / Date: 31/03/2019

Divisa / Currency: EUR

Esta serie histórica calculada a esta fecha puede diferir de las series históricas calculadas con anterioridad a consecuencia de cobros de los activos titulizados comunicados o modificados por el Administrador correspondiente con posterioridad a sus fechas de efectividad / This historical series calculated as at today's date may differ from previously calculated historical series following collections of the securitised assets communicated or modified by the relevant Servicer after their effective dates

Fecha Date	Saldo vivo de Activos en mora (Ppal. Miles €) Delinquent Asset Outstanding Balance (€ thou. Principal)	% morosidad +3 meses 3+ months delinquency %	
		sobre Saldo vivo de Principal total Activos On total Asset Principal Outstanding Balance	sobre Principal titulado on Principal securitised
31/01/2014	77.524,683	3,98%	2,58%
28/02/2014	76.146,616	3,93%	2,54%
31/03/2014	74.160,978	3,85%	2,47%
30/04/2014	75.379,240	3,93%	2,51%
31/05/2014	75.901,659	3,98%	2,53%
30/06/2014	74.774,393	3,94%	2,49%
31/07/2014	74.421,952	3,94%	2,48%
31/08/2014	75.194,168	4,00%	2,51%
30/09/2014	76.315,822	4,07%	2,54%
31/10/2014	74.421,422	3,99%	2,48%
30/11/2014	75.265,961	4,06%	2,51%
31/12/2014	74.417,957	4,04%	2,48%
31/01/2015	73.937,513	4,03%	2,46%
28/02/2015	73.732,175	4,04%	2,46%
31/03/2015	72.324,705	3,98%	2,41%
30/04/2015	70.467,282	3,90%	2,35%
31/05/2015	68.956,622	3,84%	2,30%
30/06/2015	66.262,783	3,71%	2,21%
31/07/2015	62.510,280	3,52%	2,08%
31/08/2015	63.539,427	3,59%	2,12%
30/09/2015	63.872,597	3,63%	2,13%
31/10/2015	63.465,971	3,62%	2,12%
30/11/2015	60.603,743	3,48%	2,02%
31/12/2015	59.404,032	3,43%	1,98%
31/01/2016	58.190,924	3,38%	1,94%
29/02/2016	56.096,017	3,27%	1,87%
31/03/2016	55.116,081	3,23%	1,84%
30/04/2016	53.597,803	3,16%	1,79%
31/05/2016	53.714,650	3,18%	1,79%
30/06/2016	53.700,842	3,20%	1,79%
31/07/2016	52.844,813	3,16%	1,76%
31/08/2016	53.755,492	3,23%	1,79%
30/09/2016	52.987,789	3,20%	1,77%
31/10/2016	53.594,787	3,25%	1,79%
30/11/2016	53.648,881	3,27%	1,79%
31/12/2016	53.155,717	3,26%	1,77%
31/01/2017	54.879,705	3,38%	1,83%
28/02/2017	55.367,700	3,43%	1,85%
31/03/2017	55.623,308	3,46%	1,85%

BBVA RMBS 3 Fondo de Titulización de Activos

Cartera de Activos Titulizados / Portfolio of Securitized Assets

Análisis de morosidad: Tasa de morosidad +3 meses

Delinquency analysis: 3+ months delinquency rate

Activos / Assets: Préstamos hipotecarios vivienda (CTHs) / Residential mortgage loans (PTCs)

Fecha / Date: 31/03/2019

Divisa / Currency: EUR

Esta serie histórica calculada a esta fecha puede diferir de las series históricas calculadas con anterioridad a consecuencia de cobros de los activos titulizados comunicados o modificados por el Administrador correspondiente con posterioridad a sus fechas de efectividad / This historical series calculated as at today's date may differ from previously calculated historical series following collections of the securitised assets communicated or modified by the relevant Servicer after their effective dates

Fecha Date	Saldo vivo de Activos en mora (Ppal. Miles €) Delinquent Asset Outstanding Balance (€ thou. Principal)	% morosidad +3 meses 3+ months delinquency %	
		sobre Saldo vivo de Principal total Activos On total Asset Principal Outstanding Balance	sobre Principal titulado on Principal securitised
30/04/2017	55.741,313	3,48%	1,86%
31/05/2017	54.012,877	3,40%	1,80%
30/06/2017	53.672,808	3,39%	1,79%
31/07/2017	53.247,963	3,38%	1,77%
31/08/2017	52.371,525	3,34%	1,75%
30/09/2017	52.663,258	3,38%	1,76%
31/10/2017	52.432,095	3,38%	1,75%
30/11/2017	52.012,122	3,37%	1,73%
31/12/2017	50.519,461	3,29%	1,68%
31/01/2018	50.871,699	3,33%	1,70%
28/02/2018	50.914,322	3,35%	1,70%
31/03/2018	49.631,365	3,29%	1,65%
30/04/2018	51.059,712	3,40%	1,70%
31/05/2018	51.056,560	3,42%	1,70%
30/06/2018	50.294,826	3,38%	1,68%
31/07/2018	49.817,128	3,37%	1,66%
31/08/2018	49.371,131	3,36%	1,65%
30/09/2018	48.844,978	3,34%	1,63%
31/10/2018	49.172,654	3,38%	1,64%
30/11/2018	49.128,725	3,40%	1,64%
31/12/2018	46.735,317	3,25%	1,56%
31/01/2019	47.019,745	3,29%	1,57%
28/02/2019	47.220,181	3,32%	1,57%
31/03/2019	46.776,972	3,31%	1,56%