

# HIPOCAT 7 Fondo de Titulización de Activos

## Cartera de Activos Titulizados / Portfolio of Securitised Assets

**Análisis de morosidad:** Tasa de entrada acumulada en mora +3 meses (trimestres naturales desde constitución Fondo) - Detalle por años originación activos

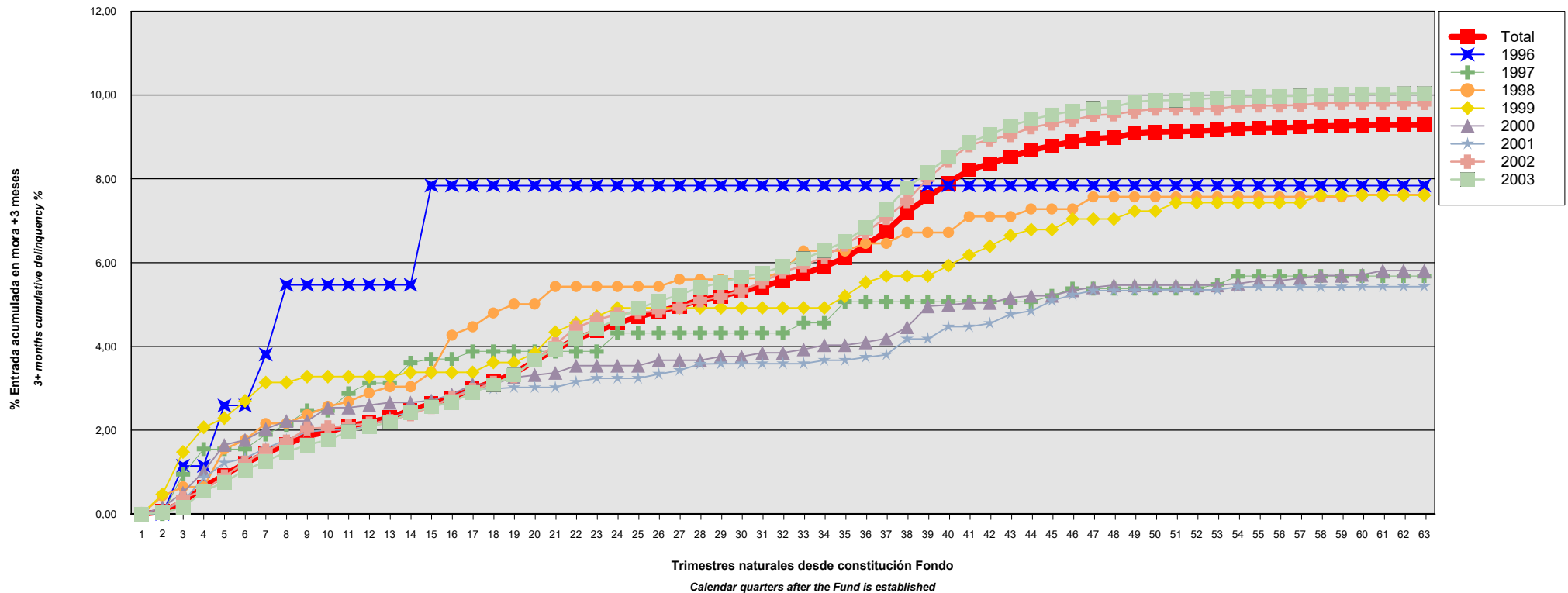
**Delinquency analysis:** 3+ months cumulative delinquency rate (calendar quarters after the Fund is established) - Detailed by asset origination years

**Activos / Assets:** Préstamos hipotecarios vivienda (PHs/CTHs) / Residential mortgage loans (PTCs/MCs)

**Fecha / Date:** 31/10/2019

**Divisa / Currency:** EUR

Esta serie histórica calculada a esta fecha puede diferir de las series históricas calculadas con anterioridad a consecuencia de cobros o actualización de información de los activos titulizados comunicados o modificados por el Administrador correspondiente con posterioridad a sus fechas de efectividad / This historical series calculated as at today's date may differ from previously calculated historical series following collections or information update of the securitised assets communicated or modified by the relevant Servicer after their effective dates



## HIPOCAT 7 Fondo de Titulización de Activos

### Cartera de Activos Titulizados / Portfolio of Securitised Assets

**Análisis de morosidad:** Tasa de entrada acumulada en mora +3 meses (trimestres naturales desde constitución Fondo) - Detalle por años originación activos

**Delinquency analysis:** 3+ months cumulative delinquency rate (calendar quarters after the Fund is established) - Detailed by asset origination years

**Activos / Assets:** Préstamos hipotecarios vivienda (PHs/CTHs) / Residential mortgage loans (PTCs/MCs)

**Fecha / Date:** 31/10/2019

**Divisa / Currency:** EUR

Esta serie histórica calculada a esta fecha puede diferir de las series históricas calculadas con anterioridad a consecuencia de cobros o actualización de información de los activos titulizados comunicados o modificados por el Administrador correspondiente con posterioridad a sus fechas de efectividad / This historical series calculated as at today's date may differ from previously calculated historical series following collections or information update of the securitised assets communicated or modified by the relevant Servicer after their effective dates

Origenación activo Asset origination	Total	1996	1997	1998	1999	2000	2001	2002	2003
Principal titulizado (mill. €) Principal securitised (€ million)	1.400,000	3,585	18,181	24,871	31,778	74,249	95,667	297,680	853,988
Nº activos / Nº. of assets	14.333	69	344	443	488	1.054	1.231	3.014	7.690
1	0,00% 0	0,00% 0	0,00% 0	0,00% 0	0,00% 0	0,00% 0	0,00% 0	0,00% 0	0,00% 0
2	0,06% 15	0,00% 0	0,00% 0	0,43% 2	0,47% 3	0,16% 3	0,09% 2	0,05% 2	0,03% 3
3	0,29% 55	1,15% 1	0,95% 3	0,65% 3	1,48% 7	0,51% 7	0,30% 5	0,38% 13	0,16% 16
4	0,65% 109	1,15% 1	1,55% 5	0,65% 3	2,07% 10	1,02% 13	0,86% 12	0,56% 21	0,55% 44
5	0,93% 161	2,59% 2	1,55% 5	1,55% 8	2,29% 11	1,65% 21	1,22% 18	0,90% 34	0,76% 62
6	1,21% 198	2,59% 2	1,55% 5	1,77% 9	2,70% 13	1,77% 23	1,33% 19	1,23% 45	1,05% 82
7	1,45% 242	3,81% 3	1,90% 6	2,16% 11	3,14% 16	2,03% 26	1,57% 23	1,51% 56	1,26% 101
8	1,66% 272	5,47% 4	2,13% 7	2,16% 11	3,14% 16	2,22% 28	1,77% 25	1,73% 63	1,48% 118
9	1,86% 302	5,47% 4	2,47% 8	2,37% 12	3,28% 17	2,22% 28	1,96% 29	2,04% 72	1,65% 132
10	1,96% 319	5,47% 4	2,47% 8	2,57% 13	3,28% 17	2,54% 32	2,01% 30	2,07% 73	1,77% 142
11	2,10% 340	5,47% 4	2,88% 10	2,68% 14	3,28% 17	2,54% 32	2,01% 30	2,11% 75	1,97% 158
12	2,19% 356	5,47% 4	3,13% 11	2,89% 15	3,28% 17	2,60% 33	2,09% 32	2,16% 76	2,08% 168
13	2,30% 374	5,47% 4	3,13% 11	3,04% 16	3,28% 17	2,66% 34	2,31% 35	2,22% 79	2,20% 178
14	2,48% 401	5,47% 4	3,61% 13	3,04% 16	3,38% 18	2,66% 34	2,43% 38	2,38% 84	2,42% 194
15	2,63% 422	7,84% 5	3,70% 14	3,39% 17	3,38% 18	2,71% 35	2,56% 40	2,55% 89	2,56% 204
16	2,78% 448	7,84% 5	3,70% 14	4,27% 22	3,38% 18	2,85% 37	2,79% 44	2,78% 95	2,67% 213
17	2,99% 480	7,84% 5	3,88% 15	4,47% 23	3,38% 18	3,10% 40	2,99% 47	2,96% 101	2,90% 231
18	3,16% 506	7,84% 5	3,88% 15	4,80% 25	3,62% 19	3,10% 40	2,99% 47	3,13% 108	3,09% 247

## HIPOCAT 7 Fondo de Titulización de Activos

### Cartera de Activos Titulizados / Portfolio of Securitised Assets

**Análisis de morosidad:** Tasa de entrada acumulada en mora +3 meses (trimestres naturales desde constitución Fondo) - Detalle por años originación activos

**Delinquency analysis:** 3+ months cumulative delinquency rate (calendar quarters after the Fund is established) - Detailed by asset origination years

**Activos / Assets:** Préstamos hipotecarios vivienda (PHs/CTHs) / Residential mortgage loans (PTCs/MCs)

**Fecha / Date:** 31/10/2019

**Divisa / Currency:** EUR

Esta serie histórica calculada a esta fecha puede diferir de las series históricas calculadas con anterioridad a consecuencia de cobros o actualización de información de los activos titulizados comunicados o modificados por el Administrador correspondiente con posterioridad a sus fechas de efectividad / This historical series calculated as at today's date may differ from previously calculated historical series following collections or information update of the securitised assets communicated or modified by the relevant Servicer after their effective dates

	Total	1996	1997	1998	1999	2000	2001	2002	2003
19	3,35% 535	7,84% 5	3,88% 15	5,01% 27	3,62% 19	3,26% 42	3,02% 48	3,29% 113	3,32% 266
20	3,66% 573	7,84% 5	3,88% 15	5,01% 27	3,84% 20	3,32% 43	3,02% 48	3,68% 122	3,68% 293
21	3,92% 612	7,84% 5	3,88% 15	5,43% 29	4,34% 22	3,37% 44	3,02% 49	4,05% 135	3,94% 313
22	4,18% 648	7,84% 5	3,88% 15	5,43% 29	4,56% 23	3,54% 46	3,15% 51	4,45% 147	4,20% 332
23	4,36% 672	7,84% 5	3,88% 15	5,43% 29	4,72% 24	3,54% 46	3,24% 52	4,64% 153	4,42% 348
24	4,55% 699	7,84% 5	4,32% 16	5,43% 29	4,92% 25	3,54% 46	3,24% 52	4,77% 158	4,66% 368
25	4,71% 720	7,84% 5	4,32% 16	5,43% 29	4,92% 25	3,54% 46	3,24% 52	4,81% 160	4,91% 387
26	4,84% 737	7,84% 5	4,32% 16	5,43% 29	4,92% 25	3,67% 47	3,34% 53	4,85% 161	5,08% 401
27	4,96% 754	7,84% 5	4,32% 16	5,60% 30	4,92% 25	3,67% 47	3,43% 54	4,94% 164	5,23% 413
28	5,11% 779	7,84% 5	4,32% 16	5,60% 30	4,92% 25	3,67% 47	3,58% 57	5,10% 171	5,41% 428
29	5,20% 792	7,84% 5	4,32% 16	5,60% 30	4,92% 25	3,76% 48	3,59% 58	5,19% 174	5,52% 436
30	5,32% 811	7,84% 5	4,32% 16	5,63% 31	4,92% 25	3,76% 48	3,59% 58	5,33% 179	5,66% 449
31	5,42% 827	7,84% 5	4,32% 16	5,63% 31	4,92% 25	3,85% 49	3,59% 58	5,54% 186	5,75% 457
32	5,58% 848	7,84% 5	4,32% 16	5,79% 32	4,92% 25	3,85% 49	3,59% 58	5,78% 194	5,91% 469
33	5,73% 873	7,84% 5	4,56% 17	6,28% 35	4,92% 25	3,93% 50	3,59% 58	5,93% 200	6,09% 483
34	5,91% 898	7,84% 5	4,56% 17	6,28% 35	4,92% 25	4,03% 51	3,67% 59	6,14% 207	6,29% 499
35	6,11% 928	7,84% 5	5,07% 19	6,28% 35	5,20% 27	4,03% 51	3,67% 59	6,43% 215	6,50% 517
36	6,41% 972	7,84% 5	5,07% 19	6,46% 37	5,53% 29	4,10% 52	3,74% 60	6,73% 227	6,84% 543
37	6,75% 1.023	7,84% 5	5,07% 19	6,46% 37	5,68% 30	4,19% 53	3,80% 61	7,07% 238	7,27% 580
38	7,20% 1.090	7,84% 5	5,07% 19	6,72% 38	5,68% 30	4,46% 56	4,18% 66	7,47% 253	7,79% 623
39	7,56% 1.146	7,84% 5	5,07% 19	6,72% 38	5,68% 30	4,96% 60	4,18% 66	8,01% 271	8,15% 657
40	7,90% 1.201	7,84% 5	5,07% 19	6,72% 38	5,93% 31	4,99% 61	4,47% 70	8,43% 286	8,52% 691
41	8,21% 1.250	7,84% 5	5,07% 19	7,10% 40	6,18% 33	5,04% 62	4,47% 70	8,80% 299	8,87% 722
42	8,36% 1.277	7,84% 5	5,07% 19	7,10% 40	6,39% 34	5,04% 62	4,55% 72	8,94% 306	9,06% 739

## HIPOCAT 7 Fondo de Titulización de Activos

### Cartera de Activos Titulizados / Portfolio of Securitised Assets

**Análisis de morosidad:** Tasa de entrada acumulada en mora +3 meses (trimestres naturales desde constitución Fondo) - Detalle por años originación activos

**Delinquency analysis:** 3+ months cumulative delinquency rate (calendar quarters after the Fund is established) - Detailed by asset origination years

**Activos / Assets:** Préstamos hipotecarios vivienda (PHs/CTHs) / Residential mortgage loans (PTCs/MCs)

**Fecha / Date:** 31/10/2019

**Divisa / Currency:** EUR

Esta serie histórica calculada a esta fecha puede diferir de las series históricas calculadas con anterioridad a consecuencia de cobros o actualización de información de los activos titulizados comunicados o modificados por el Administrador correspondiente con posterioridad a sus fechas de efectividad / This historical series calculated as at today's date may differ from previously calculated historical series following collections or information update of the securitised assets communicated or modified by the relevant Servicer after their effective dates

	Total	1996	1997	1998	1999	2000	2001	2002	2003
43	8,53%1.307	7,84% 5	5,07% 19	7,10% 40	6,65% 35	5,16% 64	4,77% 75	9,04% 310	9,26% 759
44	8,68%1.336	7,84% 5	5,07% 19	7,28% 41	6,79% 37	5,21% 65	4,85% 77	9,23% 317	9,42% 777
45	8,79%1.356	7,84% 5	5,21% 20	7,28% 41	6,79% 37	5,21% 65	5,09% 81	9,32% 321	9,53% 788
46	8,89%1.376	7,84% 5	5,38% 21	7,28% 41	7,04% 39	5,34% 67	5,23% 83	9,40% 325	9,62% 797
47	8,96%1.397	7,84% 5	5,38% 21	7,57% 42	7,04% 39	5,41% 69	5,33% 86	9,52% 330	9,68% 805
48	8,99%1.402	7,84% 5	5,38% 21	7,57% 42	7,04% 39	5,46% 70	5,33% 86	9,54% 331	9,71% 808
49	9,09%1.416	7,84% 5	5,38% 21	7,57% 42	7,23% 40	5,46% 70	5,33% 86	9,61% 334	9,84% 818
50	9,12%1.425	7,84% 5	5,38% 21	7,57% 42	7,23% 40	5,46% 70	5,35% 87	9,67% 337	9,87% 823
51	9,13%1.429	7,84% 5	5,38% 21	7,57% 42	7,43% 42	5,46% 70	5,35% 87	9,67% 337	9,88% 825
52	9,14%1.431	7,84% 5	5,38% 21	7,57% 42	7,43% 42	5,46% 70	5,35% 87	9,67% 337	9,90% 827
53	9,16%1.435	7,84% 5	5,48% 22	7,57% 42	7,43% 42	5,46% 70	5,35% 87	9,67% 337	9,93% 830
54	9,20%1.444	7,84% 5	5,68% 24	7,57% 42	7,43% 42	5,50% 71	5,42% 88	9,74% 340	9,95% 832
55	9,21%1.447	7,84% 5	5,68% 24	7,57% 42	7,43% 42	5,57% 72	5,42% 88	9,75% 341	9,96% 833
56	9,22%1.449	7,84% 5	5,68% 24	7,57% 42	7,43% 42	5,57% 72	5,42% 88	9,75% 341	9,97% 835
57	9,23%1.453	7,84% 5	5,68% 24	7,57% 42	7,43% 42	5,63% 73	5,42% 88	9,76% 342	9,98% 837
58	9,26%1.461	7,84% 5	5,68% 24	7,57% 42	7,61% 45	5,69% 74	5,42% 88	9,81% 343	10,01% 840
59	9,27%1.462	7,84% 5	5,68% 24	7,57% 42	7,61% 45	5,69% 74	5,42% 88	9,81% 343	10,02% 841
60	9,28%1.467	7,84% 5	5,68% 24	7,62% 43	7,61% 45	5,71% 75	5,43% 89	9,81% 343	10,03% 843
61	9,29%1.469	7,84% 5	5,68% 24	7,62% 43	7,61% 45	5,81% 77	5,43% 89	9,81% 343	10,03% 843
62	9,29%1.472	7,84% 5	5,68% 24	7,62% 43	7,61% 45	5,81% 77	5,43% 89	9,81% 343	10,04% 846
63	9,29%1.472	7,84% 5	5,68% 24	7,62% 43	7,61% 45	5,81% 77	5,43% 89	9,81% 343	10,04% 846