

# HIPOCAT 9 Fondo de Titulización de Activos

## Cartera de Activos Titulizados / Portfolio of Securitised Assets

**Análisis de morosidad:** Tasa de entrada acumulada en mora +3 meses (trimestres naturales desde constitución Fondo) - Detalle por años originación activos

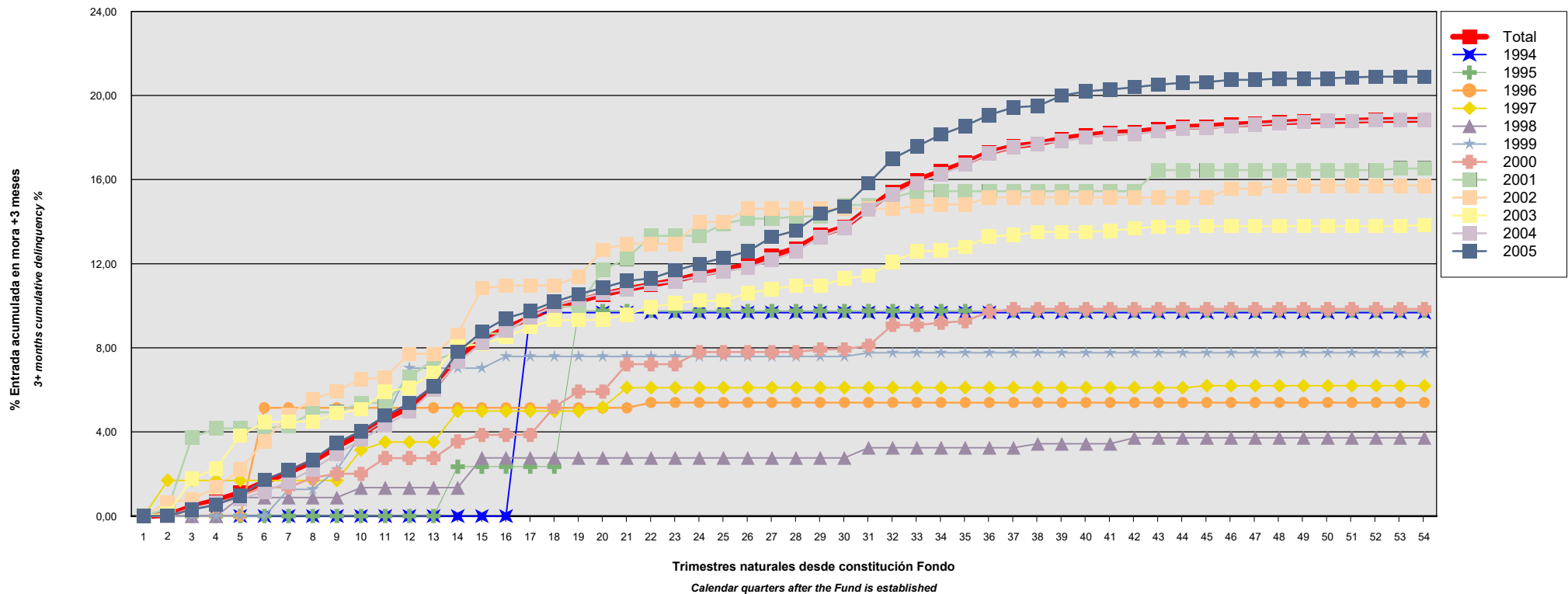
**Delinquency analysis:** 3+ months cumulative delinquency rate (calendar quarters after the Fund is established) - Detailed by asset origination years

**Activos / Assets:** Préstamos hipotecarios vivienda (CTHs) / Residential mortgage loans (PTCs)

**Fecha / Date:** 31/03/2019

**Divisa / Currency:** EUR

Esta serie histórica calculada a esta fecha puede diferir de las series históricas calculadas con anterioridad a consecuencia de cobros o actualización de información de los activos titulizados comunicados o modificados por el Administrador correspondiente con posterioridad a sus fechas de efectividad / This historical series calculated as at today's date may differ from previously calculated historical series following collections or information update of the securitised assets communicated or modified by the relevant Servicer after their effective dates



## HIPOCAT 9 Fondo de Titulización de Activos

### Cartera de Activos Titulizados / Portfolio of Securitised Assets

**Análisis de morosidad:** Tasa de entrada acumulada en mora +3 meses (trimestres naturales desde constitución Fondo) - Detalle por años originación activos

**Delinquency analysis:** 3+ months cumulative delinquency rate (calendar quarters after the Fund is established) - Detailed by asset origination years

**Activos / Assets:** Préstamos hipotecarios vivienda (CTHs) / Residential mortgage loans (PTCs)

**Fecha / Date:** 31/03/2019

**Divisa / Currency:** EUR

Esta serie histórica calculada a esta fecha puede diferir de las series históricas calculadas con anterioridad a consecuencia de cobros o actualización de información de los activos titulizados comunicados o modificados por el Administrador correspondiente con posterioridad a sus fechas de efectividad / This historical series calculated as at today's date may differ from previously calculated historical series following collections or information update of the securitised assets communicated or modified by the relevant Servicer after their effective dates

Origenación activo Asset origination	Total	1994	1995	1996	1997	1998	1999	2000	2001	2002	2003	2004	2005
Principal titulizado (mill. €) Principal securitised (€ million)	1.000,000	0,191	0,596	1,703	3,365	3,405	6,363	10,078	12,033	19,299	59,788	553,478	329,702
Nº activos / Nº. of assets	8.277	9	27	76	156	147	223	263	248	270	614	4.043	2.201
1	0,00% 0	0,00% 0	0,00% 0	0,00% 0	0,00% 0	0,00% 0	0,00% 0	0,00% 0	0,00% 0	0,00% 0	0,00% 0	0,00% 0	0,00% 0
2	0,04% 6	0,00% 0	0,00% 0	0,00% 0	1,70% 1	0,00% 0	0,00% 0	0,00% 0	0,36% 1	0,67% 2	0,14% 1	0,00% 0	0,02% 1
3	0,46% 36	0,00% 0	0,00% 0	0,00% 0	1,70% 1	0,00% 0	0,00% 0	0,39% 1	3,74% 4	0,79% 3	1,77% 7	0,33% 14	0,30% 6
4	0,75% 61	0,00% 0	0,00% 0	0,00% 0	1,70% 1	0,00% 0	0,00% 0	0,61% 2	4,17% 5	1,36% 4	2,27% 11	0,63% 26	0,54% 12
5	1,11% 88	0,00% 0	0,00% 0	0,00% 0	1,70% 1	0,88% 1	0,00% 0	0,96% 3	4,17% 5	2,21% 6	3,83% 17	0,81% 34	0,97% 21
6	1,63% 122	0,00% 0	0,00% 0	5,15% 1	1,70% 1	0,88% 1	0,00% 0	1,36% 4	4,17% 5	3,55% 8	4,46% 20	1,16% 49	1,73% 33
7	2,07% 156	0,00% 0	0,00% 0	5,15% 1	1,70% 1	0,88% 1	1,27% 1	1,36% 4	4,30% 6	4,81% 10	4,50% 21	1,64% 67	2,17% 44
8	2,60% 190	0,00% 0	0,00% 0	5,15% 1	1,70% 1	0,88% 1	1,27% 1	1,82% 5	4,94% 7	5,55% 11	4,50% 21	2,23% 87	2,68% 55
9	3,30% 235	0,00% 0	0,00% 0	5,15% 1	1,70% 1	0,88% 1	2,20% 2	2,01% 6	4,94% 7	5,95% 12	4,89% 23	2,96% 113	3,47% 69
10	3,91% 279	0,00% 0	0,00% 0	5,15% 1	3,15% 2	1,35% 2	3,85% 3	2,01% 6	5,38% 8	6,50% 14	5,08% 24	3,63% 137	4,05% 82
11	4,59% 332	0,00% 0	0,00% 0	5,15% 1	3,52% 3	1,35% 2	4,56% 4	2,76% 8	5,38% 8	6,60% 15	5,92% 29	4,31% 165	4,77% 97
12	5,20% 373	0,00% 0	0,00% 0	5,15% 1	3,52% 3	1,35% 2	7,04% 5	2,76% 8	6,61% 9	7,72% 17	6,11% 30	4,96% 189	5,36% 109
13	6,11% 433	0,00% 0	0,00% 0	5,15% 1	3,52% 3	1,35% 2	7,04% 5	2,76% 8	7,43% 10	7,72% 17	6,81% 34	6,01% 229	6,18% 124
14	7,47% 524	0,00% 0	2,35% 1	5,15% 1	4,99% 4	1,35% 2	7,04% 5	3,55% 9	7,75% 11	8,64% 19	8,07% 40	7,32% 276	7,80% 156
15	8,38% 590	0,00% 0	2,35% 1	5,15% 1	4,99% 4	2,77% 3	7,04% 5	3,86% 11	8,69% 12	10,83% 23	8,18% 41	8,24% 314	8,77% 175
16	8,93% 635	0,00% 0	2,35% 1	5,15% 1	4,99% 4	2,77% 3	7,59% 7	3,86% 11	8,69% 12	10,96% 24	8,51% 43	8,82% 337	9,40% 192
17	9,44% 670	9,68% 1	2,35% 1	5,15% 1	4,99% 4	2,77% 3	7,59% 7	3,86% 11	9,51% 13	10,96% 24	9,01% 45	9,46% 360	9,75% 200
18	9,93% 705	9,68% 1	2,35% 1	5,15% 1	4,99% 4	2,77% 3	7,59% 7	5,20% 13	9,96% 14	10,96% 24	9,32% 47	10,01% 380	10,19% 210

## HIPOCAT 9 Fondo de Titulización de Activos

### Cartera de Activos Titulizados / Portfolio of Securitised Assets

**Análisis de morosidad:** Tasa de entrada acumulada en mora +3 meses (trimestres naturales desde constitución Fondo) - Detalle por años originación activos

**Delinquency analysis:** 3+ months cumulative delinquency rate (calendar quarters after the Fund is established) - Detailed by asset origination years

**Activos / Assets:** Préstamos hipotecarios vivienda (CTHs) / Residential mortgage loans (PTCs)

**Fecha / Date:** 31/03/2019

**Divisa / Currency:** EUR

Esta serie histórica calculada a esta fecha puede diferir de las series históricas calculadas con anterioridad a consecuencia de cobros o actualización de información de los activos titulizados comunicados o modificados por el Administrador correspondiente con posterioridad a sus fechas de efectividad / This historical series calculated as at today's date may differ from previously calculated historical series following collections or information update of the securitised assets communicated or modified by the relevant Servicer after their effective dates

	Total	1994	1995	1996	1997	1998	1999	2000	2001	2002	2003	2004	2005
19	10,23% 727	9,68% 1	9,76% 2	5,15% 1	4,99% 4	2,77% 3	7,59% 7	5,92% 14	9,96% 14	11,38% 25	9,32% 47	10,31% 392	10,55% 217
20	10,54% 752	9,68% 1	9,76% 2	5,15% 1	5,17% 5	2,77% 3	7,59% 7	5,92% 14	11,70% 17	12,67% 28	9,35% 48	10,59% 403	10,86% 223
21	10,80% 774	9,68% 1	9,76% 2	5,15% 1	6,11% 6	2,77% 3	7,59% 7	7,22% 16	12,24% 18	12,95% 29	9,59% 49	10,79% 413	11,18% 229
22	11,00% 791	9,68% 1	9,76% 2	5,40% 2	6,11% 6	2,77% 3	7,59% 7	7,22% 16	13,33% 19	12,95% 29	9,93% 51	11,03% 423	11,30% 232
23	11,21% 807	9,68% 1	9,76% 2	5,40% 2	6,11% 6	2,77% 3	7,59% 7	7,22% 16	13,33% 19	12,95% 29	10,12% 52	11,17% 430	11,68% 240
24	11,49% 831	9,68% 1	9,76% 2	5,40% 2	6,11% 6	2,77% 3	7,59% 7	7,80% 17	13,33% 19	13,98% 31	10,24% 53	11,42% 442	12,00% 248
25	11,72% 849	9,68% 1	9,76% 2	5,40% 2	6,11% 6	2,77% 3	7,59% 7	7,80% 17	13,90% 21	13,98% 31	10,24% 53	11,65% 452	12,28% 254
26	11,95% 864	9,68% 1	9,76% 2	5,40% 2	6,11% 6	2,77% 3	7,59% 7	7,80% 17	14,14% 22	14,62% 32	10,60% 54	11,81% 459	12,59% 259
27	12,39% 896	9,68% 1	9,76% 2	5,40% 2	6,11% 6	2,77% 3	7,59% 7	7,80% 17	14,14% 22	14,62% 32	10,79% 55	12,18% 475	13,27% 274
28	12,73% 924	9,68% 1	9,76% 2	5,40% 2	6,11% 6	2,77% 3	7,59% 7	7,80% 17	14,25% 23	14,62% 32	10,96% 57	12,59% 493	13,58% 281
29	13,38% 968	9,68% 1	9,76% 2	5,40% 2	6,11% 6	2,77% 3	7,59% 7	7,93% 18	14,25% 23	14,62% 32	10,96% 57	13,28% 521	14,38% 296
30	13,74% 997	9,68% 1	9,76% 2	5,40% 2	6,11% 6	2,77% 3	7,59% 7	7,93% 18	14,79% 24	14,62% 32	11,30% 59	13,70% 539	14,71% 304
31	14,61% 1.056	9,68% 1	9,76% 2	5,40% 2	6,11% 6	3,25% 4	7,76% 8	8,11% 19	14,79% 24	14,62% 32	11,42% 61	14,58% 572	15,83% 328
32	15,44% 1.120	9,68% 1	9,76% 2	5,40% 2	6,11% 6	3,25% 4	7,76% 8	9,09% 21	15,13% 25	14,62% 32	12,10% 66	15,29% 601	17,00% 352
33	15,97% 1.163	9,68% 1	9,76% 2	5,40% 2	6,11% 6	3,25% 4	7,76% 8	9,09% 21	15,45% 26	14,74% 33	12,58% 69	15,84% 624	17,58% 367
34	16,40% 1.197	9,68% 1	9,76% 2	5,40% 2	6,11% 6	3,25% 4	7,76% 8	9,19% 22	15,45% 26	14,81% 34	12,63% 70	16,27% 642	18,14% 380
35	16,79% 1.233	9,68% 1	9,76% 2	5,40% 2	6,11% 6	3,25% 4	7,76% 8	9,27% 23	15,45% 26	14,81% 34	12,80% 72	16,70% 665	18,56% 390
36	17,30% 1.276	9,68% 1	9,76% 2	5,40% 2	6,11% 6	3,25% 4	7,76% 8	9,71% 24	15,45% 26	15,14% 35	13,30% 76	17,24% 689	19,08% 403
37	17,59% 1.301	9,68% 1	9,76% 2	5,40% 2	6,11% 6	3,25% 4	7,76% 8	9,85% 25	15,45% 26	15,14% 35	13,37% 77	17,53% 703	19,44% 412
38	17,71% 1.315	9,68% 1	9,76% 2	5,40% 2	6,11% 6	3,44% 5	7,76% 8	9,85% 25	15,45% 26	15,14% 35	13,52% 79	17,70% 712	19,51% 414
39	17,95% 1.335	9,68% 1	9,76% 2	5,40% 2	6,11% 6	3,44% 5	7,76% 8	9,85% 25	15,45% 26	15,14% 35	13,52% 79	17,85% 720	19,99% 426
40	18,11% 1.348	9,68% 1	9,76% 2	5,40% 2	6,11% 6	3,44% 5	7,76% 8	9,85% 25	15,45% 26	15,14% 35	13,52% 79	18,01% 727	20,20% 432
41	18,22% 1.360	9,68% 1	9,76% 2	5,40% 2	6,11% 6	3,44% 5	7,76% 8	9,85% 25	15,45% 26	15,14% 35	13,56% 80	18,15% 737	20,28% 433
42	18,27% 1.367	9,68% 1	9,76% 2	5,40% 2	6,11% 6	3,72% 6	7,76% 8	9,85% 25	15,45% 26	15,14% 35	13,67% 81	18,17% 739	20,39% 436

## HIPOCAT 9 Fondo de Titulización de Activos

### Cartera de Activos Titulizados / Portfolio of Securitised Assets

**Análisis de morosidad:** Tasa de entrada acumulada en mora +3 meses (trimestres naturales desde constitución Fondo) - Detalle por años originación activos

**Delinquency analysis:** 3+ months cumulative delinquency rate (calendar quarters after the Fund is established) - Detailed by asset origination years

**Activos / Assets:** Préstamos hipotecarios vivienda (CTHs) / Residential mortgage loans (PTCs)

**Fecha / Date:** 31/03/2019

**Divisa / Currency:** EUR

Esta serie histórica calculada a esta fecha puede diferir de las series históricas calculadas con anterioridad a consecuencia de cobros o actualización de información de los activos titulizados comunicados o modificados por el Administrador correspondiente con posterioridad a sus fechas de efectividad / This historical series calculated as at today's date may differ from previously calculated historical series following collections or information update of the securitised assets communicated or modified by the relevant Servicer after their effective dates

	Total	1994	1995	1996	1997	1998	1999	2000	2001	2002	2003	2004	2005
43	18,40%1.377	9,68% 1	9,76% 2	5,40% 2	6,11% 6	3,72% 6	7,76% 8	9,85% 25	16,45% 27	15,14% 35	13,78% 82	18,29% 744	20,52% 439
44	18,51%1.385	9,68% 1	9,76% 2	5,40% 2	6,11% 6	3,72% 6	7,76% 8	9,85% 25	16,45% 27	15,14% 35	13,78% 82	18,43% 750	20,60% 441
45	18,54%1.390	9,68% 1	9,76% 2	5,40% 2	6,20% 7	3,72% 6	7,76% 8	9,85% 25	16,45% 27	15,14% 35	13,79% 83	18,46% 752	20,64% 442
46	18,62%1.398	9,68% 1	9,76% 2	5,40% 2	6,20% 7	3,72% 6	7,76% 8	9,85% 25	16,45% 27	15,57% 36	13,79% 83	18,53% 756	20,74% 445
47	18,66%1.402	9,68% 1	9,76% 2	5,40% 2	6,20% 7	3,72% 6	7,76% 8	9,85% 25	16,45% 27	15,57% 36	13,79% 83	18,62% 760	20,74% 445
48	18,72%1.409	9,68% 1	9,76% 2	5,40% 2	6,20% 7	3,72% 6	7,76% 8	9,85% 25	16,45% 27	15,72% 37	13,79% 83	18,68% 764	20,80% 447
49	18,76%1.413	9,68% 1	9,76% 2	5,40% 2	6,20% 7	3,72% 6	7,76% 8	9,85% 25	16,45% 27	15,72% 37	13,79% 83	18,75% 768	20,80% 447
50	18,78%1.417	9,68% 1	9,76% 2	5,40% 2	6,20% 7	3,72% 6	7,76% 8	9,85% 25	16,45% 27	15,72% 37	13,79% 83	18,78% 771	20,81% 448
51	18,80%1.420	9,68% 1	9,76% 2	5,40% 2	6,20% 7	3,72% 6	7,76% 8	9,85% 25	16,45% 27	15,72% 37	13,79% 83	18,79% 772	20,86% 450
52	18,83%1.422	9,68% 1	9,76% 2	5,40% 2	6,20% 7	3,72% 6	7,76% 8	9,85% 25	16,45% 27	15,72% 37	13,79% 83	18,81% 773	20,90% 451
53	18,84%1.425	9,68% 1	9,76% 2	5,40% 2	6,20% 7	3,72% 6	7,76% 8	9,85% 25	16,53% 28	15,72% 37	13,79% 83	18,84% 775	20,90% 451
54	18,85%1.427	9,68% 1	9,76% 2	5,40% 2	6,20% 7	3,72% 6	7,76% 8	9,85% 25	16,53% 28	15,72% 37	13,85% 84	18,84% 776	20,90% 451