

HIPOCAT 10 Fondo de Titulización de Activos

Cartera de Activos Titulizados / Portfolio of Securitised Assets

Análisis de morosidad: Tasa de entrada acumulada en mora +3 meses (trimestres naturales desde constitución Fondo) - Detalle por años originación activos

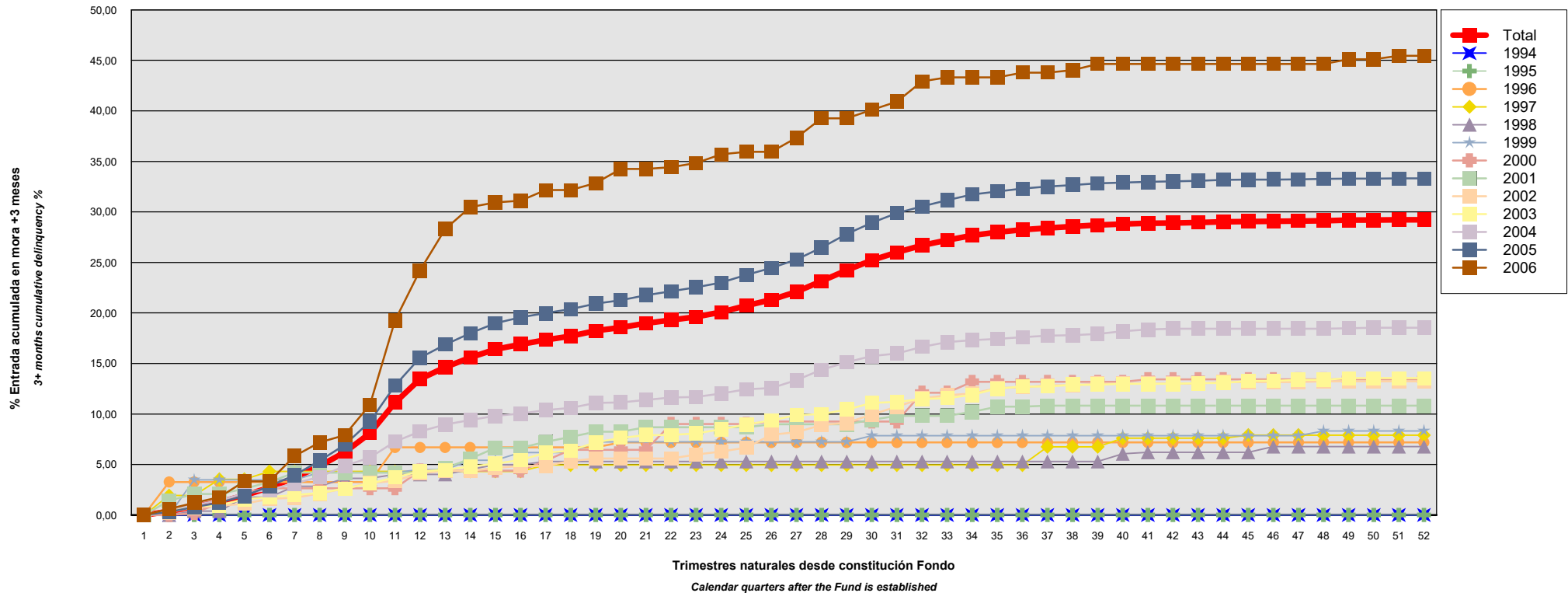
Delinquency analysis: 3+ months cumulative delinquency rate (calendar quarters after the Fund is established) - Detailed by asset origination years

Activos / Assets: Préstamos hipotecarios vivienda (CTHS) / Residential mortgage loans (PTCs)

Fecha / Date: 30/04/2019

Divisa / Currency: EUR

Esta serie histórica calculada a esta fecha puede diferir de las series históricas calculadas con anterioridad a consecuencia de cobros o actualización de información de los activos titulizados comunicados o modificados por el Administrador correspondiente con posterioridad a sus fechas de efectividad / This historical series calculated as at today's date may differ from previously calculated historical series following collections or information update of the securitised assets communicated or modified by the relevant Servicer after their effective dates



HIPOCAT 10 Fondo de Titulización de Activos

Cartera de Activos Titulizados / Portfolio of Securitised Assets

Análisis de morosidad: Tasa de entrada acumulada en mora +3 meses (trimestres naturales desde constitución Fondo) - Detalle por años originación activos

Delinquency analysis: 3+ months cumulative delinquency rate (calendar quarters after the Fund is established) - Detailed by asset origination years

Activos / Assets: Préstamos hipotecarios vivienda (CTHs) / Residential mortgage loans (PTCs)

Fecha / Date: 30/04/2019

Divisa / Currency: EUR

Esta serie histórica calculada a esta fecha puede diferir de las series históricas calculadas con anterioridad a consecuencia de cobros o actualización de información de los activos titulizados comunicados o modificados por el Administrador correspondiente con posterioridad a sus fechas de efectividad / This historical series calculated as at today's date may differ from previously calculated historical series following collections or information update of the securitised assets communicated or modified by the relevant Servicer after their effective dates

Origenación activo Asset origination	Total	1994	1995	1996	1997	1998	1999	2000	2001	2002	2003	2004	2005	2006
Principal titulizado (mill. €) Principal securitised (€ million)	1.500,001	0,226	0,098	1,079	4,927	4,993	6,134	11,838	18,071	45,610	109,096	167,997	1.089,589	40,343
Nº activos / Nº. of assets	11.370	6	4	28	115	101	126	195	265	519	1.083	1.493	7.193	242
1	0,00% 0	0,00% 0	0,00% 0	0,00% 0	0,00% 0	0,00% 0	0,00% 0	0,00% 0	0,00% 0	0,00% 0	0,00% 0	0,00% 0	0,00% 0	0,00% 0
2	0,37% 51	0,00% 0	0,00% 0	3,27% 1	1,93% 2	0,00% 0	0,00% 0	0,00% 0	1,43% 4	0,28% 2	0,38% 4	0,58% 10	0,31% 27	0,61% 1
3	0,84% 107	0,00% 0	0,00% 0	3,27% 1	1,93% 2	0,40% 1	3,48% 4	0,19% 1	2,09% 5	0,74% 5	0,88% 9	0,97% 17	0,77% 60	1,21% 2
4	1,27% 160	0,00% 0	0,00% 0	3,27% 1	3,54% 3	0,40% 1	3,48% 4	1,18% 3	2,09% 5	0,90% 6	0,97% 11	1,44% 25	1,23% 98	1,76% 3
5	1,94% 228	0,00% 0	0,00% 0	3,27% 1	3,54% 3	1,76% 2	3,48% 4	2,28% 5	2,61% 6	1,12% 8	1,56% 18	2,12% 33	1,90% 141	3,33% 7
6	2,71% 312	0,00% 0	0,00% 0	3,27% 1	4,32% 4	1,76% 2	3,48% 4	2,65% 6	3,27% 7	1,60% 11	1,77% 22	2,51% 39	2,84% 209	3,33% 7
7	3,69% 412	0,00% 0	0,00% 0	3,27% 1	4,32% 4	2,85% 3	3,48% 4	2,65% 6	4,20% 9	1,71% 12	1,99% 24	3,13% 48	3,96% 288	5,85% 13
8	4,87% 524	0,00% 0	0,00% 0	3,27% 1	4,32% 4	2,85% 3	4,23% 5	2,65% 6	4,20% 9	2,12% 15	2,19% 26	3,78% 59	5,38% 380	7,18% 16
9	6,20% 643	0,00% 0	0,00% 0	3,27% 1	4,32% 4	3,64% 4	4,23% 5	2,65% 6	4,20% 9	2,62% 17	2,62% 31	4,85% 70	6,95% 478	7,90% 18
10	8,10% 820	0,00% 0	0,00% 0	3,27% 1	4,32% 4	3,64% 4	4,23% 5	2,65% 6	4,20% 9	3,17% 19	3,11% 37	5,70% 80	9,26% 629	10,92% 26
11	11,13% 1.082	0,00% 0	0,00% 0	6,69% 2	4,32% 4	4,03% 5	4,23% 5	2,65% 6	4,20% 9	3,39% 20	3,73% 44	7,26% 95	12,81% 850	19,24% 42
12	13,46% 1.291	0,00% 0	0,00% 0	6,69% 2	4,32% 4	4,03% 5	4,49% 6	4,40% 9	4,20% 9	4,15% 24	4,31% 53	8,27% 107	15,56% 1.020	24,20% 52
13	14,62% 1.417	0,00% 0	0,00% 0	6,69% 2	4,32% 4	4,03% 5	4,49% 6	4,40% 9	4,64% 10	4,37% 26	4,47% 55	8,95% 116	16,87% 1.123	28,32% 61
14	15,59% 1.511	0,00% 0	0,00% 0	6,69% 2	4,32% 4	4,51% 6	5,43% 7	4,40% 9	5,56% 12	4,37% 26	4,82% 58	9,39% 123	18,00% 1.198	30,48% 66
15	16,40% 1.595	0,00% 0	0,00% 0	6,69% 2	4,32% 4	4,97% 7	5,43% 7	4,40% 9	6,64% 15	4,67% 27	5,07% 61	9,81% 127	18,98% 1.265	30,95% 71
16	16,90% 1.648	0,00% 0	0,00% 0	6,69% 2	4,32% 4	4,97% 7	6,18% 8	4,40% 9	6,64% 15	4,86% 28	5,45% 64	10,05% 130	19,58% 1.309	31,10% 72
17	17,33% 1.696	0,00% 0	0,00% 0	6,69% 2	4,95% 5	5,30% 8	6,18% 8	5,38% 11	7,25% 17	4,86% 28	6,17% 70	10,39% 134	19,98% 1.339	32,17% 74
18	17,69% 1.734	0,00% 0	0,00% 0	6,69% 2	4,95% 5	5,30% 8	6,18% 8	6,45% 13	7,74% 18	5,34% 31	6,38% 73	10,60% 137	20,38% 1.365	32,17% 74

HIPOCAT 10 Fondo de Titulización de Activos

Cartera de Activos Titulizados / Portfolio of Securitised Assets

Análisis de morosidad: Tasa de entrada acumulada en mora +3 meses (trimestres naturales desde constitución Fondo) - Detalle por años originación activos

Delinquency analysis: 3+ months cumulative delinquency rate (calendar quarters after the Fund is established) - Detailed by asset origination years

Activos / Assets: Préstamos hipotecarios vivienda (CTHs) / Residential mortgage loans (PTCs)

Fecha / Date: 30/04/2019

Divisa / Currency: EUR

Esta serie histórica calculada a esta fecha puede diferir de las series históricas calculadas con anterioridad a consecuencia de cobros o actualización de información de los activos titulizados comunicados o modificados por el Administrador correspondiente con posterioridad a sus fechas de efectividad / This historical series calculated as at today's date may differ from previously calculated historical series following collections or information update of the securitised assets communicated or modified by the relevant Servicer after their effective dates

	Total	1994	1995	1996	1997	1998	1999	2000	2001	2002	2003	2004	2005	2006
19	18,24%1.792	0,00% 0	0,00% 0	6,69% 2	4,95% 5	5,30% 8	7,25% 10	6,45% 13	8,24% 20	5,59% 32	7,18% 79	11,09% 144	20,93%1.403	32,85% 76
20	18,56%1.827	0,00% 0	0,00% 0	7,19% 3	4,95% 5	5,30% 8	7,25% 10	6,45% 13	8,24% 20	5,59% 32	7,63% 84	11,14% 145	21,26%1.427	34,26% 80
21	18,98%1.871	0,00% 0	0,00% 0	7,19% 3	4,95% 5	5,30% 8	7,25% 10	6,45% 13	8,69% 23	5,59% 32	7,91% 86	11,40% 149	21,76%1.462	34,26% 80
22	19,31%1.902	0,00% 0	0,00% 0	7,19% 3	4,95% 5	5,30% 8	7,25% 10	9,02% 15	8,69% 23	5,59% 32	7,93% 87	11,63% 153	22,15%1.485	34,43% 81
23	19,62%1.937	0,00% 0	0,00% 0	7,19% 3	4,95% 5	5,30% 8	7,25% 10	9,02% 15	8,69% 23	5,99% 34	8,07% 88	11,69% 154	22,53%1.515	34,84% 82
24	20,08%1.984	0,00% 0	0,00% 0	7,19% 3	4,95% 5	5,30% 8	7,25% 10	9,02% 15	8,69% 23	6,28% 36	8,50% 91	12,02% 159	23,01%1.550	35,70% 84
25	20,72%2.048	0,00% 0	0,00% 0	7,19% 3	4,95% 5	5,30% 8	7,25% 10	9,02% 15	8,69% 23	6,68% 39	8,95% 96	12,45% 164	23,77%1.600	35,95% 85
26	21,31%2.107	0,00% 0	0,00% 0	7,19% 3	4,95% 5	5,30% 8	7,25% 10	9,25% 16	8,98% 24	7,95% 41	9,38% 101	12,56% 166	24,46%1.648	35,95% 85
27	22,09%2.182	0,00% 0	0,00% 0	7,19% 3	4,95% 5	5,30% 8	7,25% 10	9,25% 16	8,98% 24	8,20% 42	9,89% 105	13,35% 175	25,29%1.705	37,34% 89
28	23,15%2.287	0,00% 0	0,00% 0	7,19% 3	4,95% 5	5,30% 8	7,25% 10	9,25% 16	8,98% 24	8,92% 46	9,99% 106	14,39% 189	26,48%1.787	39,26% 93
29	24,23%2.388	0,00% 0	0,00% 0	7,19% 3	4,95% 5	5,30% 8	7,25% 10	9,25% 16	8,98% 24	9,12% 47	10,44% 112	15,12% 197	27,81%1.873	39,26% 93
30	25,22%2.486	0,00% 0	0,00% 0	7,19% 3	4,95% 5	5,30% 8	7,86% 11	9,25% 16	9,42% 25	9,95% 50	11,10% 119	15,73% 204	28,93%1.950	40,10% 95
31	26,00%2.566	0,00% 0	0,00% 0	7,19% 3	4,95% 5	5,30% 8	7,86% 11	9,25% 16	9,83% 26	10,72% 54	11,20% 120	15,99% 209	29,88%2.017	40,92% 97
32	26,68%2.644	0,00% 0	0,00% 0	7,19% 3	4,95% 5	5,30% 8	7,86% 11	12,11% 19	9,83% 26	11,53% 58	11,50% 124	16,65% 218	30,55%2.070	42,92% 102
33	27,21%2.701	0,00% 0	0,00% 0	7,19% 3	4,95% 5	5,30% 8	7,86% 11	12,11% 19	9,83% 26	11,87% 60	11,56% 125	17,12% 223	31,17%2.118	43,31% 103
34	27,68%2.752	0,00% 0	0,00% 0	7,19% 3	4,95% 5	5,30% 8	7,86% 11	13,18% 20	10,22% 27	12,04% 62	11,90% 130	17,32% 226	31,73%2.157	43,31% 103
35	27,98%2.788	0,00% 0	0,00% 0	7,19% 3	4,95% 5	5,30% 8	7,86% 11	13,18% 20	10,72% 28	12,56% 65	12,51% 137	17,43% 228	32,02%2.180	43,31% 103
36	28,23%2.818	0,00% 0	0,00% 0	7,19% 3	4,95% 5	5,30% 8	7,86% 11	13,18% 20	10,72% 28	12,64% 66	12,72% 139	17,60% 231	32,31%2.203	43,78% 104
37	28,40%2.846	0,00% 0	0,00% 0	7,19% 3	6,76% 7	5,30% 8	7,86% 11	13,18% 20	10,83% 29	12,84% 69	12,72% 139	17,75% 234	32,50%2.222	43,78% 104
38	28,55%2.864	0,00% 0	0,00% 0	7,19% 3	6,76% 7	5,30% 8	7,86% 11	13,18% 20	10,83% 29	12,84% 69	12,90% 141	17,81% 235	32,67%2.236	44,02% 105
39	28,70%2.881	0,00% 0	0,00% 0	7,19% 3	6,76% 7	5,30% 8	7,86% 11	13,18% 20	10,83% 29	13,00% 70	12,90% 141	17,93% 238	32,83%2.248	44,64% 106
40	28,80%2.897	0,00% 0	0,00% 0	7,19% 3	7,60% 8	6,07% 9	7,86% 11	13,18% 20	10,83% 29	13,00% 70	12,98% 142	18,20% 242	32,91%2.257	44,64% 106
41	28,87%2.907	0,00% 0	0,00% 0	7,19% 3	7,60% 8	6,21% 10	7,86% 11	13,44% 21	10,83% 29	13,00% 70	12,98% 142	18,36% 245	32,97%2.262	44,64% 106
42	28,91%2.913	0,00% 0	0,00% 0	7,19% 3	7,60% 8	6,21% 10	7,86% 11	13,44% 21	10,83% 29	13,00% 70	12,98% 142	18,45% 247	33,02%2.266	44,64% 106

HIPOCAT 10 Fondo de Titulización de Activos

Cartera de Activos Titulizados / Portfolio of Securitised Assets

Análisis de morosidad: Tasa de entrada acumulada en mora +3 meses (trimestres naturales desde constitución Fondo) - Detalle por años originación activos

Delinquency analysis: 3+ months cumulative delinquency rate (calendar quarters after the Fund is established) - Detailed by asset origination years

Activos / Assets: Préstamos hipotecarios vivienda (CTHs) / Residential mortgage loans (PTCs)

Fecha / Date: 30/04/2019

Divisa / Currency: EUR

Esta serie histórica calculada a esta fecha puede diferir de las series históricas calculadas con anterioridad a consecuencia de cobros o actualización de información de los activos titulizados comunicados o modificados por el Administrador correspondiente con posterioridad a sus fechas de efectividad / This historical series calculated as at today's date may differ from previously calculated historical series following collections or information update of the securitised assets communicated or modified by the relevant Servicer after their effective dates

	Total	1994	1995	1996	1997	1998	1999	2000	2001	2002	2003	2004	2005	2006
43	28,95%2.920	0,00% 0	0,00% 0	7,19% 3	7,60% 8	6,21% 10	7,86% 11	13,44% 21	10,83% 29	13,00% 70	13,05% 143	18,45% 247	33,07%2.272	44,64% 106
44	29,03%2.931	0,00% 0	0,00% 0	7,19% 3	7,60% 8	6,21% 10	7,86% 11	13,44% 21	10,83% 29	13,15% 71	13,07% 145	18,45% 247	33,17%2.280	44,64% 106
45	29,06%2.936	0,00% 0	0,00% 0	7,19% 3	7,91% 9	6,21% 10	7,86% 11	13,44% 21	10,83% 29	13,15% 71	13,28% 147	18,45% 247	33,19%2.282	44,64% 106
46	29,08%2.939	0,00% 0	0,00% 0	7,19% 3	7,91% 9	6,77% 11	7,86% 11	13,44% 21	10,83% 29	13,15% 71	13,28% 147	18,45% 247	33,21%2.284	44,64% 106
47	29,10%2.942	0,00% 0	0,00% 0	7,19% 3	7,91% 9	6,77% 11	7,86% 11	13,44% 21	10,83% 29	13,15% 71	13,39% 149	18,45% 247	33,22%2.285	44,64% 106
48	29,13%2.949	0,00% 0	0,00% 0	7,19% 3	7,91% 9	6,77% 11	8,33% 12	13,44% 21	10,83% 29	13,24% 72	13,39% 149	18,45% 247	33,27%2.290	44,64% 106
49	29,19%2.957	0,00% 0	0,00% 0	7,19% 3	7,91% 9	6,77% 11	8,33% 12	13,44% 21	10,83% 29	13,24% 72	13,55% 151	18,49% 248	33,30%2.294	45,12% 107
50	29,19%2.958	0,00% 0	0,00% 0	7,19% 3	7,91% 9	6,77% 11	8,33% 12	13,44% 21	10,83% 29	13,24% 72	13,55% 151	18,53% 249	33,30%2.294	45,12% 107
51	29,21%2.961	0,00% 0	0,00% 0	7,19% 3	7,91% 9	6,77% 11	8,33% 12	13,44% 21	10,83% 29	13,24% 72	13,55% 151	18,53% 249	33,32%2.296	45,45% 108
52	29,21%2.961	0,00% 0	0,00% 0	7,19% 3	7,91% 9	6,77% 11	8,33% 12	13,44% 21	10,83% 29	13,24% 72	13,55% 151	18,53% 249	33,32%2.296	45,45% 108