

HIPOCAT 11 Fondo de Titulización de Activos

Cartera de Activos Titulizados / Portfolio of Securitised Assets

Análisis de morosidad: Tasa de entrada acumulada en mora +3 meses (trimestres naturales desde constitución Fondo) - Detalle por años originación activos

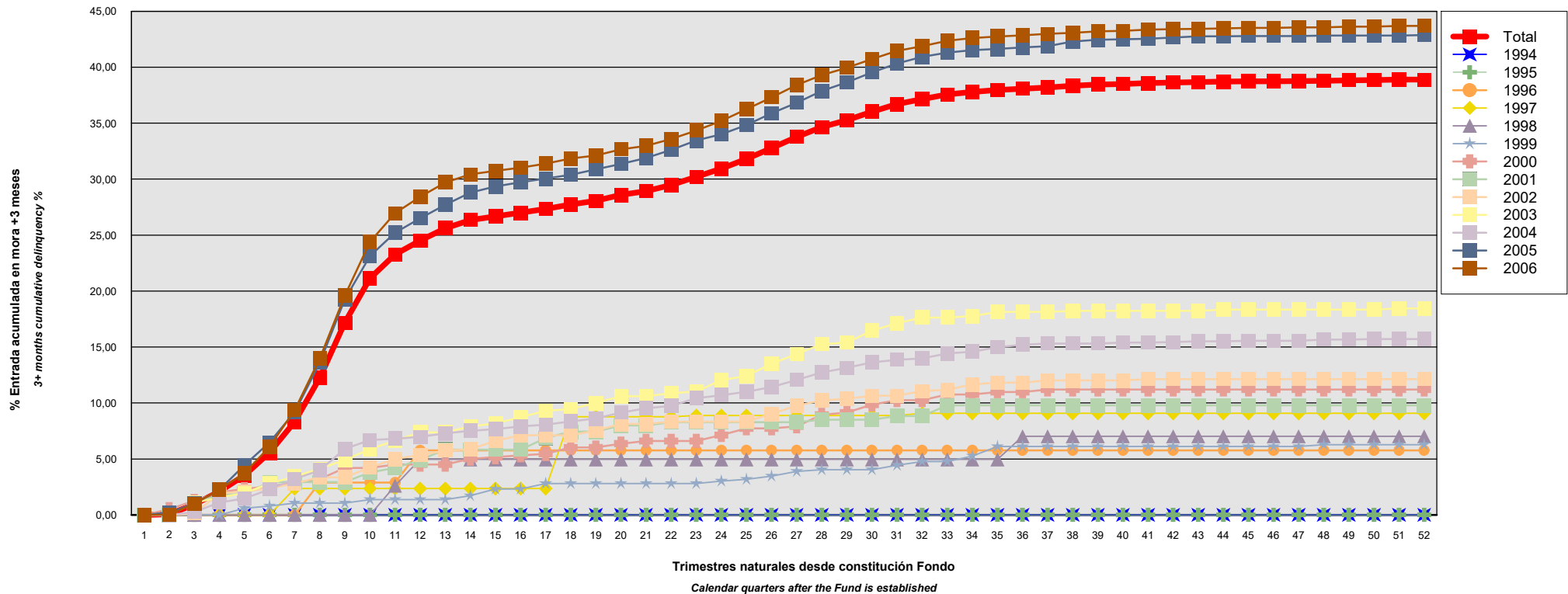
Delinquency analysis: 3+ months cumulative delinquency rate (calendar quarters after the Fund is established) - Detailed by asset origination years

Activos / Assets: Préstamos hipotecarios vivienda (CTHs) / Residential mortgage loans (PTCs)

Fecha / Date: 31/10/2019

Divisa / Currency: EUR

Esta serie histórica calculada a esta fecha puede diferir de las series históricas calculadas con anterioridad a consecuencia de cobros o actualización de información de los activos titulizados comunicados o modificados por el Administrador correspondiente con posterioridad a sus fechas de efectividad / This historical series calculated as at today's date may differ from previously calculated historical series following collections or information update of the securitised assets communicated or modified by the relevant Servicer after their effective dates



HIPOCAT 11 Fondo de Titulización de Activos

Cartera de Activos Titulizados / Portfolio of Securitised Assets

Análisis de morosidad: Tasa de entrada acumulada en mora +3 meses (trimestres naturales desde constitución Fondo) - Detalle por años originación activos

Delinquency analysis: 3+ months cumulative delinquency rate (calendar quarters after the Fund is established) - Detailed by asset origination years

Activos / Assets: Préstamos hipotecarios vivienda (CTHs) / Residential mortgage loans (PTCs)

Fecha / Date: 31/10/2019

Divisa / Currency: EUR

Esta serie histórica calculada a esta fecha puede diferir de las series históricas calculadas con anterioridad a consecuencia de cobros o actualización de información de los activos titulizados comunicados o modificados por el Administrador correspondiente con posterioridad a sus fechas de efectividad / This historical series calculated as at today's date may differ from previously calculated historical series following collections or information update of the securitised assets communicated or modified by the relevant Servicer after their effective dates

Origenación activo Asset origination	Total	1994	1995	1996	1997	1998	1999	2000	2001	2002	2003	2004	2005	2006
Principal titulizado (mill. €) Principal securitised (€ million)	1.600,000	0,016	0,103	0,782	2,087	1,996	14,576	16,896	15,122	25,087	50,931	127,024	314,249	1.031,132
Nº activos / Nº. of assets	10.635	1	3	22	40	39	308	326	237	356	655	1.277	1.892	5.479
1	0,00% 0	0,00% 0	0,00% 0	0,00% 0	0,00% 0	0,00% 0	0,00% 0	0,00% 0	0,00% 0	0,00% 0	0,00% 0	0,00% 0	0,00% 0	0,00% 0
2	0,06% 8	0,00% 0	0,00% 0	0,00% 0	0,00% 0	0,00% 0	0,00% 0	0,51% 2	0,00% 0	0,00% 0	0,06% 1	0,00% 0	0,21% 4	0,02% 1
3	0,92% 96	0,00% 0	0,00% 0	0,00% 0	0,00% 0	0,00% 0	0,00% 0	1,26% 4	1,04% 3	0,13% 1	1,09% 7	0,26% 5	1,02% 21	0,99% 55
4	2,09% 206	0,00% 0	0,00% 0	0,00% 0	0,00% 0	0,00% 0	0,00% 0	2,03% 6	1,83% 5	1,92% 6	1,57% 9	1,10% 16	2,25% 43	2,24% 121
5	3,54% 337	0,00% 0	0,00% 0	0,00% 0	0,00% 0	0,00% 0	0,59% 2	2,31% 8	1,83% 5	2,12% 7	1,94% 11	1,48% 21	4,43% 83	3,74% 200
6	5,56% 501	0,00% 0	0,00% 0	0,00% 0	0,00% 0	0,00% 0	0,80% 3	2,56% 9	2,93% 7	2,35% 8	2,81% 15	2,27% 27	6,47% 117	6,08% 315
7	8,32% 728	0,00% 0	0,00% 0	0,00% 0	2,35% 1	0,00% 0	1,06% 4	2,86% 10	2,93% 7	2,83% 10	3,43% 19	3,22% 35	9,19% 166	9,37% 476
8	12,25% 1.057	0,00% 0	0,00% 0	2,90% 1	2,35% 1	0,00% 0	1,06% 4	3,20% 11	2,93% 7	3,36% 13	4,13% 23	3,98% 45	13,59% 241	13,97% 711
9	17,17% 1.454	0,00% 0	0,00% 0	2,90% 1	2,35% 1	0,00% 0	1,06% 4	4,20% 15	2,93% 7	3,36% 13	4,91% 28	5,89% 62	19,24% 337	19,59% 986
10	21,14% 1.794	0,00% 0	0,00% 0	2,90% 1	2,35% 1	0,00% 0	1,37% 5	4,20% 15	3,80% 9	4,24% 16	5,87% 31	6,69% 72	23,13% 409	24,39% 1.235
11	23,27% 1.988	0,00% 0	0,00% 0	2,90% 1	2,35% 1	2,61% 1	1,37% 5	4,50% 17	4,20% 10	5,00% 18	6,63% 35	6,81% 74	25,22% 449	26,96% 1.378
12	24,51% 2.107	0,00% 0	0,00% 0	5,77% 2	2,35% 1	4,96% 2	1,37% 5	4,50% 17	4,92% 11	5,37% 19	7,37% 39	6,98% 76	26,50% 474	28,43% 1.461
13	25,62% 2.210	0,00% 0	0,00% 0	5,77% 2	2,35% 1	4,96% 2	1,37% 5	4,50% 17	5,84% 12	5,74% 20	7,37% 39	7,28% 80	27,72% 501	29,71% 1.531
14	26,34% 2.279	0,00% 0	0,00% 0	5,77% 2	2,35% 1	4,96% 2	1,71% 6	5,02% 19	5,84% 12	5,86% 21	7,90% 43	7,52% 82	28,80% 520	30,43% 1.571
15	26,68% 2.317	0,00% 0	0,00% 0	5,77% 2	2,35% 1	4,96% 2	2,31% 7	5,16% 20	5,84% 12	6,62% 23	8,18% 44	7,66% 85	29,34% 530	30,73% 1.591
16	27,00% 2.351	0,00% 0	0,00% 0	5,77% 2	2,35% 1	4,96% 2	2,31% 7	5,33% 21	5,84% 12	7,12% 24	8,72% 47	7,92% 89	29,73% 537	31,03% 1.609
17	27,34% 2.386	0,00% 0	0,00% 0	5,77% 2	2,35% 1	4,96% 2	2,80% 8	5,45% 22	6,86% 13	7,12% 24	9,29% 49	8,06% 91	30,05% 543	31,39% 1.631
18	27,74% 2.431	0,00% 0	0,00% 0	5,77% 2	8,78% 2	4,96% 2	2,80% 8	6,02% 23	7,44% 14	7,12% 24	9,45% 50	8,36% 95	30,39% 551	31,84% 1.660

HIPOCAT 11 Fondo de Titulización de Activos

Cartera de Activos Titulizados / Portfolio of Securitised Assets

Análisis de morosidad: Tasa de entrada acumulada en mora +3 meses (trimestres naturales desde constitución Fondo) - Detalle por años originación activos

Delinquency analysis: 3+ months cumulative delinquency rate (calendar quarters after the Fund is established) - Detailed by asset origination years

Activos / Assets: Préstamos hipotecarios vivienda (CTHs) / Residential mortgage loans (PTCs)

Fecha / Date: 31/10/2019

Divisa / Currency: EUR

Esta serie histórica calculada a esta fecha puede diferir de las series históricas calculadas con anterioridad a consecuencia de cobros o actualización de información de los activos titulizados comunicados o modificados por el Administrador correspondiente con posterioridad a sus fechas de efectividad / This historical series calculated as at today's date may differ from previously calculated historical series following collections or information update of the securitised assets communicated or modified by the relevant Servicer after their effective dates

	Total	1994	1995	1996	1997	1998	1999	2000	2001	2002	2003	2004	2005	2006
19	28,07%2.468	0,00% 0	0,00% 0	5,77% 2	8,78% 2	4,96% 2	2,80% 8	6,02% 23	7,44% 14	7,53% 26	10,00% 53	8,61% 99	30,87% 561	32,12%1.678
20	28,59%2.518	0,00% 0	0,00% 0	5,77% 2	8,78% 2	4,96% 2	2,80% 8	6,37% 24	7,99% 15	8,12% 27	10,61% 57	9,15% 104	31,36% 570	32,66%1.707
21	28,93%2.552	0,00% 0	0,00% 0	5,77% 2	8,78% 2	4,96% 2	2,80% 8	6,61% 25	7,99% 15	8,12% 27	10,61% 57	9,53% 109	31,88% 580	32,98%1.725
22	29,49%2.607	0,00% 0	0,00% 0	5,77% 2	8,78% 2	4,96% 2	2,80% 8	6,61% 25	8,29% 16	8,33% 28	10,88% 59	9,75% 112	32,62% 595	33,58%1.758
23	30,21%2.670	0,00% 0	0,00% 0	5,77% 2	8,88% 3	4,96% 2	2,80% 8	6,61% 25	8,29% 16	8,33% 28	11,03% 60	10,42% 118	33,45% 610	34,35%1.798
24	30,93%2.736	0,00% 0	0,00% 0	5,77% 2	8,88% 3	4,96% 2	3,02% 9	7,14% 27	8,29% 16	8,33% 28	12,05% 65	10,70% 121	34,02% 620	35,20%1.843
25	31,81%2.816	0,00% 0	0,00% 0	5,77% 2	8,88% 3	4,96% 2	3,18% 10	7,73% 29	8,29% 16	8,33% 28	12,41% 68	11,01% 125	34,83% 634	36,25%1.899
26	32,78%2.907	0,00% 0	0,00% 0	5,77% 2	8,88% 3	4,96% 2	3,46% 11	7,73% 29	8,29% 16	9,03% 30	13,51% 75	11,43% 129	35,89% 655	37,30%1.955
27	33,77%3.007	0,00% 0	0,00% 0	5,77% 2	8,88% 3	4,96% 2	3,89% 13	7,92% 30	8,29% 16	9,76% 32	14,38% 81	12,06% 136	36,82% 674	38,40%2.018
28	34,65%3.094	0,00% 0	0,00% 0	5,77% 2	8,88% 3	4,96% 2	4,04% 14	8,94% 33	8,51% 17	10,22% 33	15,25% 85	12,72% 143	37,87% 695	39,30%2.067
29	35,27%3.156	0,00% 0	0,00% 0	5,77% 2	8,88% 3	4,96% 2	4,04% 14	9,15% 34	8,51% 17	10,39% 34	15,40% 87	13,15% 147	38,65% 710	39,96%2.106
30	36,03%3.232	0,00% 0	0,00% 0	5,77% 2	8,88% 3	4,96% 2	4,04% 14	9,86% 36	8,51% 17	10,65% 35	16,47% 92	13,64% 153	39,54% 727	40,73%2.151
31	36,70%3.293	0,00% 0	0,00% 0	5,77% 2	8,88% 3	4,96% 2	4,44% 15	10,25% 38	8,83% 18	10,65% 35	17,13% 95	13,85% 155	40,33% 742	41,45%2.188
32	37,14%3.347	0,00% 0	0,00% 0	5,77% 2	9,07% 4	4,96% 2	4,77% 16	10,25% 38	8,83% 18	11,07% 37	17,64% 98	13,98% 158	40,94% 757	41,89%2.217
33	37,57%3.397	0,00% 0	0,00% 0	5,77% 2	9,07% 4	4,96% 2	4,77% 16	10,76% 40	9,78% 20	11,17% 39	17,64% 98	14,42% 164	41,30% 766	42,36%2.246
34	37,80%3.426	0,00% 0	0,00% 0	5,77% 2	9,07% 4	4,96% 2	5,26% 18	10,76% 40	9,78% 20	11,66% 41	17,76% 99	14,59% 167	41,52% 771	42,62%2.262
35	37,97%3.455	0,00% 0	0,00% 0	5,77% 2	9,07% 4	4,96% 2	6,11% 21	10,99% 41	9,78% 20	11,82% 42	18,15% 104	14,98% 172	41,63% 774	42,75%2.273
36	38,08%3.471	0,00% 0	0,00% 0	5,77% 2	9,07% 4	7,02% 3	6,11% 21	10,99% 41	9,78% 20	11,82% 42	18,15% 104	15,21% 175	41,76% 777	42,86%2.282
37	38,20%3.488	0,00% 0	0,00% 0	5,77% 2	9,07% 4	7,02% 3	6,11% 21	11,21% 42	9,78% 20	12,01% 43	18,15% 104	15,31% 177	41,87% 781	42,99%2.291
38	38,35%3.495	0,00% 0	0,00% 0	5,77% 2	9,07% 4	7,02% 3	6,11% 21	11,21% 42	9,78% 20	12,01% 43	18,24% 105	15,31% 177	42,31% 785	43,08%2.297
39	38,46%3.511	0,00% 0	0,00% 0	5,77% 2	9,07% 4	7,02% 3	6,11% 21	11,21% 42	9,78% 20	12,01% 43	18,24% 105	15,31% 177	42,45% 789	43,21%2.305
40	38,50%3.517	0,00% 0	0,00% 0	5,77% 2	9,07% 4	7,02% 3	6,11% 21	11,21% 42	9,78% 20	12,01% 43	18,24% 105	15,40% 179	42,50% 790	43,25%2.308
41	38,58%3.525	0,00% 0	0,00% 0	5,77% 2	9,07% 4	7,02% 3	6,11% 21	11,21% 42	9,78% 20	12,13% 44	18,24% 105	15,40% 179	42,54% 791	43,36%2.314
42	38,63%3.532	0,00% 0	0,00% 0	5,77% 2	9,07% 4	7,02% 3	6,11% 21	11,21% 42	9,78% 20	12,13% 44	18,24% 105	15,45% 180	42,65% 794	43,40%2.317

HIPOCAT 11 Fondo de Titulización de Activos

Cartera de Activos Titulizados / Portfolio of Securitised Assets

Análisis de morosidad: Tasa de entrada acumulada en mora +3 meses (trimestres naturales desde constitución Fondo) - Detalle por años originación activos

Delinquency analysis: 3+ months cumulative delinquency rate (calendar quarters after the Fund is established) - Detailed by asset origination years

Activos / Assets: Préstamos hipotecarios vivienda (CTHs) / Residential mortgage loans (PTCs)

Fecha / Date: 31/10/2019

Divisa / Currency: EUR

Esta serie histórica calculada a esta fecha puede diferir de las series históricas calculadas con anterioridad a consecuencia de cobros o actualización de información de los activos titulizados comunicados o modificados por el Administrador correspondiente con posterioridad a sus fechas de efectividad / This historical series calculated as at today's date may differ from previously calculated historical series following collections or information update of the securitised assets communicated or modified by the relevant Servicer after their effective dates

	Total	1994	1995	1996	1997	1998	1999	2000	2001	2002	2003	2004	2005	2006
43	38,68%3.537	0,00% 0	0,00% 0	5,77% 2	9,07% 4	7,02% 3	6,11% 21	11,21% 42	9,78% 20	12,13% 44	18,24% 105	15,52% 181	42,76% 796	43,42%2.319
44	38,71%3.541	0,00% 0	0,00% 0	5,77% 2	9,07% 4	7,02% 3	6,11% 21	11,21% 42	9,78% 20	12,13% 44	18,33% 106	15,52% 181	42,76% 796	43,48%2.322
45	38,75%3.548	0,00% 0	0,00% 0	5,77% 2	9,07% 4	7,02% 3	6,11% 21	11,21% 42	9,78% 20	12,13% 44	18,33% 107	15,56% 182	42,79% 798	43,52%2.325
46	38,75%3.549	0,00% 0	0,00% 0	5,77% 2	9,07% 4	7,02% 3	6,11% 21	11,21% 42	9,78% 20	12,13% 44	18,33% 107	15,56% 182	42,79% 798	43,52%2.326
47	38,77%3.552	0,00% 0	0,00% 0	5,77% 2	9,07% 4	7,02% 3	6,11% 21	11,21% 42	9,78% 20	12,13% 44	18,33% 107	15,56% 182	42,79% 799	43,55%2.328
48	38,79%3.556	0,00% 0	0,00% 0	5,77% 2	9,07% 4	7,02% 3	6,27% 22	11,21% 42	9,78% 20	12,13% 44	18,33% 107	15,67% 183	42,82% 800	43,55%2.329
49	38,83%3.562	0,00% 0	0,00% 0	5,77% 2	9,07% 4	7,02% 3	6,27% 22	11,21% 42	9,78% 20	12,13% 44	18,33% 107	15,67% 183	42,83% 801	43,62%2.334
50	38,85%3.565	0,00% 0	0,00% 0	5,77% 2	9,07% 4	7,02% 3	6,27% 22	11,21% 42	9,78% 20	12,13% 44	18,33% 107	15,72% 184	42,83% 801	43,63%2.336
51	38,89%3.569	0,00% 0	0,00% 0	5,77% 2	9,07% 4	7,02% 3	6,27% 22	11,21% 42	9,78% 20	12,13% 44	18,44% 108	15,72% 184	42,83% 801	43,69%2.339
52	38,90%3.570	0,00% 0	0,00% 0	5,77% 2	9,07% 4	7,02% 3	6,27% 22	11,21% 42	9,78% 20	12,13% 44	18,44% 108	15,72% 184	42,88% 802	43,69%2.339