

MBS BANCAJA 4 Fondo de Titulización de Activos

Cartera de Activos Titulizados / Portfolio of Securitised Assets

Análisis de morosidad: Tasa de morosidad +3 meses

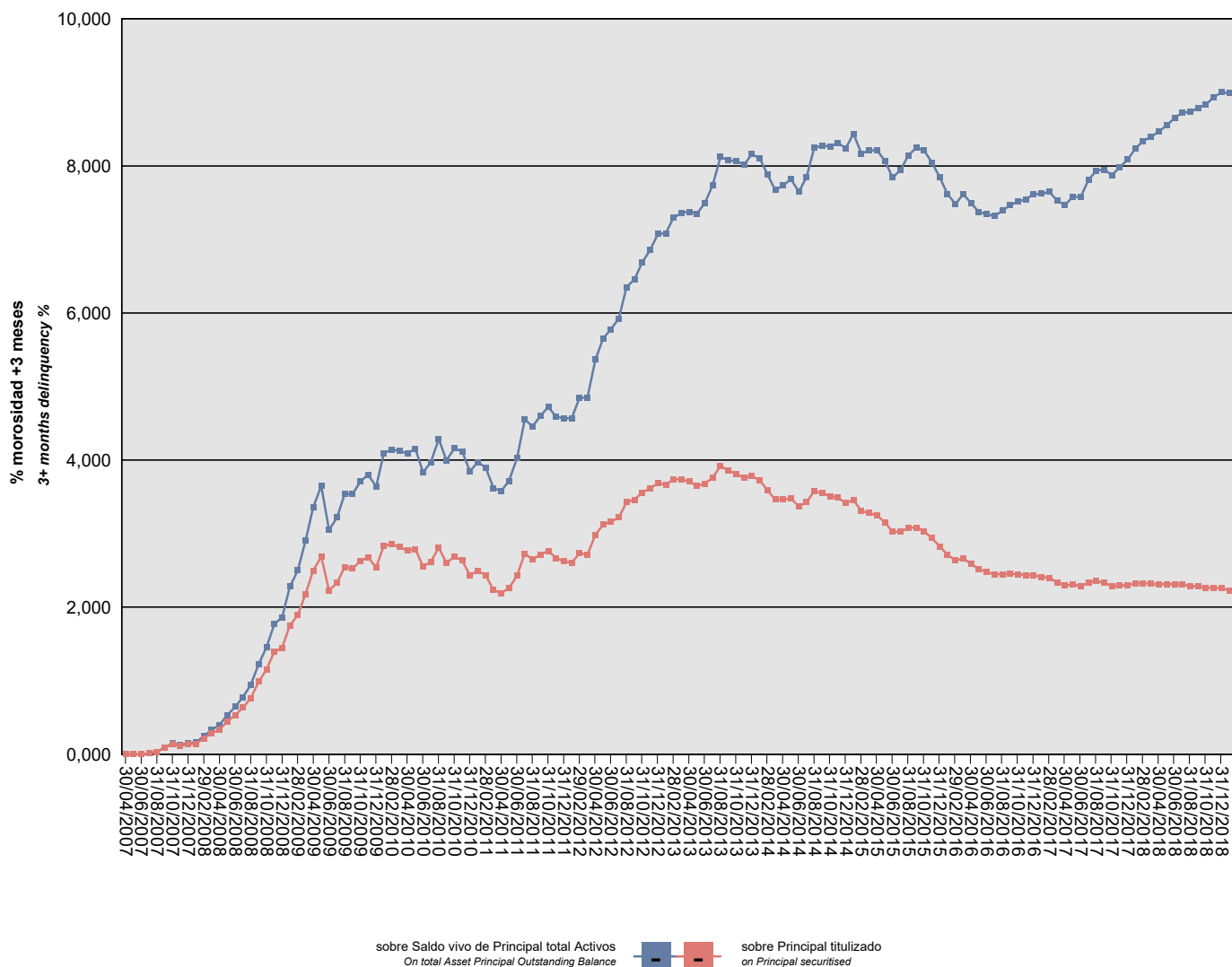
Delinquency analysis: 3+ months delinquency rate

Activos / Assets: Préstamos hipotecarios (CTHs) / Mortgage loans (PTCs)

Fecha / Date: 31/01/2019

Divisa / Currency: EUR

Esta serie histórica calculada a esta fecha puede diferir de las series históricas calculadas con anterioridad a consecuencia de cobros de los activos titulizados comunicados o modificados por el Administrador correspondiente con posterioridad a sus fechas de efectividad / This historical series calculated as at today's date may differ from previously calculated historical series following collections of the securitised assets communicated or modified by the relevant Servicer after their effective dates



MBS BANCAJA 4 Fondo de Titulización de Activos

Cartera de Activos Titulizados / Portfolio of Securitized Assets

Análisis de morosidad: Tasa de morosidad +3 meses

Delinquency analysis: 3+ months delinquency rate

Activos / Assets: Préstamos hipotecarios (CTHs) / Mortgage loans (PTCs)

Fecha / Date: 31/01/2019

Divisa / Currency: EUR

Esta serie histórica calculada a esta fecha puede diferir de las series históricas calculadas con anterioridad a consecuencia de cobros de los activos titulizados comunicados o modificados por el Administrador correspondiente con posterioridad a sus fechas de efectividad / This historical series calculated as at today's date may differ from previously calculated historical series following collections of the securitized assets communicated or modified by the relevant Servicer after their effective dates

Fecha Date	Saldo vivo de Activos en mora (Ppal. Miles €) Delinquent Asset Outstanding Balance (€ thou. Principal)	% morosidad +3 meses 3+ months delinquency %	
		sobre Saldo vivo de Principal total Activos On total Asset Principal Outstanding Balance	sobre Principal titulado on Principal securitised
30/04/2007	0,000	0,00%	0,00%
31/05/2007	0,000	0,00%	0,00%
30/06/2007	0,000	0,00%	0,00%
31/07/2007	217,648	0,01%	0,01%
31/08/2007	605,656	0,03%	0,03%
30/09/2007	1.586,240	0,09%	0,09%
31/10/2007	2.501,157	0,15%	0,14%
30/11/2007	2.142,761	0,13%	0,12%
31/12/2007	2.482,836	0,15%	0,13%
31/01/2008	2.660,149	0,16%	0,14%
29/02/2008	4.003,699	0,25%	0,22%
31/03/2008	5.230,442	0,33%	0,28%
30/04/2008	6.283,390	0,40%	0,34%
31/05/2008	8.267,788	0,53%	0,45%
30/06/2008	9.882,402	0,65%	0,53%
31/07/2008	11.747,257	0,78%	0,63%
31/08/2008	14.134,559	0,94%	0,76%
30/09/2008	18.244,312	1,23%	0,99%
31/10/2008	21.327,600	1,45%	1,15%
30/11/2008	25.800,549	1,77%	1,39%
31/12/2008	26.773,926	1,86%	1,45%
31/01/2009	32.413,118	2,28%	1,75%
28/02/2009	35.016,991	2,50%	1,89%
31/03/2009	40.326,672	2,91%	2,18%
30/04/2009	46.251,801	3,36%	2,50%
31/05/2009	49.731,168	3,65%	2,69%
30/06/2009	41.228,760	3,05%	2,23%
31/07/2009	43.127,203	3,22%	2,33%
31/08/2009	47.113,343	3,54%	2,55%
30/09/2009	46.715,727	3,54%	2,52%
31/10/2009	48.623,775	3,71%	2,63%
30/11/2009	49.529,355	3,80%	2,68%
31/12/2009	47.007,477	3,64%	2,54%
31/01/2010	52.514,951	4,09%	2,84%
28/02/2010	52.833,300	4,14%	2,86%
31/03/2010	52.111,589	4,12%	2,82%
30/04/2010	51.250,968	4,09%	2,77%
31/05/2010	51.638,023	4,16%	2,79%
30/06/2010	47.184,756	3,83%	2,55%

MBS BANCAJA 4 Fondo de Titulización de Activos

Cartera de Activos Titulizados / Portfolio of Securitised Assets

Análisis de morosidad: Tasa de morosidad +3 meses

Delinquency analysis: 3+ months delinquency rate

Activos / Assets: Préstamos hipotecarios (CTHs) / Mortgage loans (PTCs)

Fecha / Date: 31/01/2019

Divisa / Currency: EUR

Esta serie histórica calculada a esta fecha puede diferir de las series históricas calculadas con anterioridad a consecuencia de cobros de los activos titulizados comunicados o modificados por el Administrador correspondiente con posterioridad a sus fechas de efectividad / This historical series calculated as at today's date may differ from previously calculated historical series following collections of the securitised assets communicated or modified by the relevant Servicer after their effective dates

Fecha Date	Saldo vivo de Activos en mora (Ppal. Miles €) Delinquent Asset Outstanding Balance (€ thou. Principal)	% morosidad +3 meses 3+ months delinquency %	
		sobre Saldo vivo de Principal total Activos On total Asset Principal Outstanding Balance	sobre Principal titulado on Principal securitised
31/07/2010	48.466,950	3,97%	2,62%
31/08/2010	51.967,685	4,29%	2,81%
30/09/2010	48.105,464	4,00%	2,60%
31/10/2010	49.711,481	4,16%	2,69%
30/11/2010	48.743,694	4,12%	2,63%
31/12/2010	45.068,893	3,85%	2,44%
31/01/2011	46.193,115	3,97%	2,50%
28/02/2011	45.034,231	3,90%	2,43%
31/03/2011	41.311,886	3,62%	2,23%
30/04/2011	40.546,323	3,58%	2,19%
31/05/2011	41.826,960	3,72%	2,26%
30/06/2011	44.965,556	4,03%	2,43%
31/07/2011	50.500,286	4,55%	2,73%
31/08/2011	48.978,370	4,46%	2,65%
30/09/2011	50.241,599	4,60%	2,72%
31/10/2011	51.168,173	4,72%	2,77%
30/11/2011	49.283,172	4,59%	2,66%
31/12/2011	48.545,604	4,57%	2,62%
31/01/2012	48.149,757	4,57%	2,60%
29/02/2012	50.680,031	4,85%	2,74%
31/03/2012	50.179,287	4,85%	2,71%
30/04/2012	55.226,091	5,37%	2,98%
31/05/2012	57.752,683	5,65%	3,12%
30/06/2012	58.530,813	5,78%	3,16%
31/07/2012	59.550,559	5,93%	3,22%
31/08/2012	63.430,258	6,35%	3,43%
30/09/2012	64.058,666	6,46%	3,46%
31/10/2012	65.859,158	6,69%	3,56%
30/11/2012	66.832,387	6,85%	3,61%
31/12/2012	68.245,698	7,08%	3,69%
31/01/2013	67.725,812	7,08%	3,66%
28/02/2013	69.200,325	7,29%	3,74%
31/03/2013	69.109,644	7,36%	3,74%
30/04/2013	68.588,017	7,38%	3,71%
31/05/2013	67.463,280	7,35%	3,65%
30/06/2013	68.103,278	7,49%	3,68%
31/07/2013	69.546,133	7,73%	3,76%
31/08/2013	72.547,340	8,12%	3,92%
30/09/2013	71.374,123	8,07%	3,86%

MBS BANCAJA 4 Fondo de Titulización de Activos

Cartera de Activos Titulizados / Portfolio of Securitized Assets

Análisis de morosidad: Tasa de morosidad +3 meses

Delinquency analysis: 3+ months delinquency rate

Activos / Assets: Préstamos hipotecarios (CTHs) / Mortgage loans (PTCs)

Fecha / Date: 31/01/2019

Divisa / Currency: EUR

Esta serie histórica calculada a esta fecha puede diferir de las series históricas calculadas con anterioridad a consecuencia de cobros de los activos titulizados comunicados o modificados por el Administrador correspondiente con posterioridad a sus fechas de efectividad / This historical series calculated as at today's date may differ from previously calculated historical series following collections of the securitized assets communicated or modified by the relevant Servicer after their effective dates

Fecha Date	Saldo vivo de Activos en mora (Ppal. Miles €) Delinquent Asset Outstanding Balance (€ thou. Principal)	% morosidad +3 meses 3+ months delinquency %	
		sobre Saldo vivo de Principal total Activos On total Asset Principal Outstanding Balance	sobre Principal titulado on Principal securitised
31/10/2013	70.564,820	8,07%	3,81%
30/11/2013	69.477,260	8,02%	3,76%
31/12/2013	70.073,375	8,16%	3,79%
31/01/2014	68.905,844	8,10%	3,72%
28/02/2014	66.449,710	7,88%	3,59%
31/03/2014	64.067,539	7,67%	3,46%
30/04/2014	64.102,634	7,73%	3,46%
31/05/2014	64.343,919	7,82%	3,48%
30/06/2014	62.380,222	7,65%	3,37%
31/07/2014	63.455,408	7,85%	3,43%
31/08/2014	66.226,539	8,25%	3,58%
30/09/2014	65.692,604	8,27%	3,55%
31/10/2014	64.914,399	8,27%	3,51%
30/11/2014	64.526,734	8,31%	3,49%
31/12/2014	63.193,383	8,24%	3,42%
31/01/2015	63.999,981	8,44%	3,46%
28/02/2015	61.150,021	8,17%	3,31%
31/03/2015	60.755,919	8,21%	3,28%
30/04/2015	60.029,748	8,21%	3,24%
31/05/2015	58.377,824	8,07%	3,16%
30/06/2015	55.952,932	7,84%	3,02%
31/07/2015	56.019,615	7,95%	3,03%
31/08/2015	56.905,430	8,14%	3,08%
30/09/2015	57.069,636	8,25%	3,08%
31/10/2015	56.112,255	8,21%	3,03%
30/11/2015	54.356,254	8,05%	2,94%
31/12/2015	52.296,106	7,84%	2,83%
31/01/2016	50.171,315	7,62%	2,71%
29/02/2016	48.758,391	7,48%	2,64%
31/03/2016	49.216,898	7,62%	2,66%
30/04/2016	47.915,010	7,50%	2,59%
31/05/2016	46.574,701	7,37%	2,52%
30/06/2016	45.899,057	7,34%	2,48%
31/07/2016	45.254,784	7,32%	2,45%
31/08/2016	45.345,930	7,39%	2,45%
30/09/2016	45.424,011	7,47%	2,46%
31/10/2016	45.317,050	7,52%	2,45%
30/11/2016	45.007,474	7,54%	2,43%
31/12/2016	45.008,924	7,62%	2,43%

MBS BANCAJA 4 Fondo de Titulización de Activos

Cartera de Activos Titulizados / Portfolio of Securitised Assets

Análisis de morosidad: Tasa de morosidad +3 meses

Delinquency analysis: 3+ months delinquency rate

Activos / Assets: Préstamos hipotecarios (CTHs) / Mortgage loans (PTCs)

Fecha / Date: 31/01/2019

Divisa / Currency: EUR

Esta serie histórica calculada a esta fecha puede diferir de las series históricas calculadas con anterioridad a consecuencia de cobros de los activos titulizados comunicados o modificados por el Administrador correspondiente con posterioridad a sus fechas de efectividad / This historical series calculated as at today's date may differ from previously calculated historical series following collections of the securitised assets communicated or modified by the relevant Servicer after their effective dates

Fecha Date	Saldo vivo de Activos en mora (Ppal. Miles €) Delinquent Asset Outstanding Balance (€ thou. Principal)	% morosidad +3 meses 3+ months delinquency %	
		sobre Saldo vivo de Principal total Activos On total Asset Principal Outstanding Balance	sobre Principal titulado on Principal securitised
31/01/2017	44.611,714	7,62%	2,41%
28/02/2017	44.384,627	7,65%	2,40%
31/03/2017	43.227,488	7,53%	2,34%
30/04/2017	42.494,513	7,46%	2,30%
31/05/2017	42.769,768	7,58%	2,31%
30/06/2017	42.315,506	7,58%	2,29%
31/07/2017	43.195,215	7,81%	2,33%
31/08/2017	43.554,585	7,94%	2,35%
30/09/2017	43.205,859	7,95%	2,34%
31/10/2017	42.314,245	7,88%	2,29%
30/11/2017	42.458,820	7,98%	2,29%
31/12/2017	42.580,991	8,09%	2,30%
31/01/2018	42.963,982	8,24%	2,32%
28/02/2018	43.026,926	8,34%	2,33%
31/03/2018	42.869,447	8,40%	2,32%
30/04/2018	42.762,607	8,47%	2,31%
31/05/2018	42.809,941	8,55%	2,31%
30/06/2018	42.814,100	8,65%	2,31%
31/07/2018	42.709,674	8,73%	2,31%
31/08/2018	42.316,483	8,73%	2,29%
30/09/2018	42.200,266	8,79%	2,28%
31/10/2018	41.920,382	8,83%	2,27%
30/11/2018	41.921,240	8,93%	2,27%
31/12/2018	41.719,782	9,00%	2,25%
31/01/2019	41.261,851	8,99%	2,23%