

RURAL HIPOTECARIO GLOBAL I Fondo de Titulización de Activos

Cartera de Activos Titulizados / Portfolio of Securitised Assets

Análisis de morosidad: Tasa de morosidad +3 meses

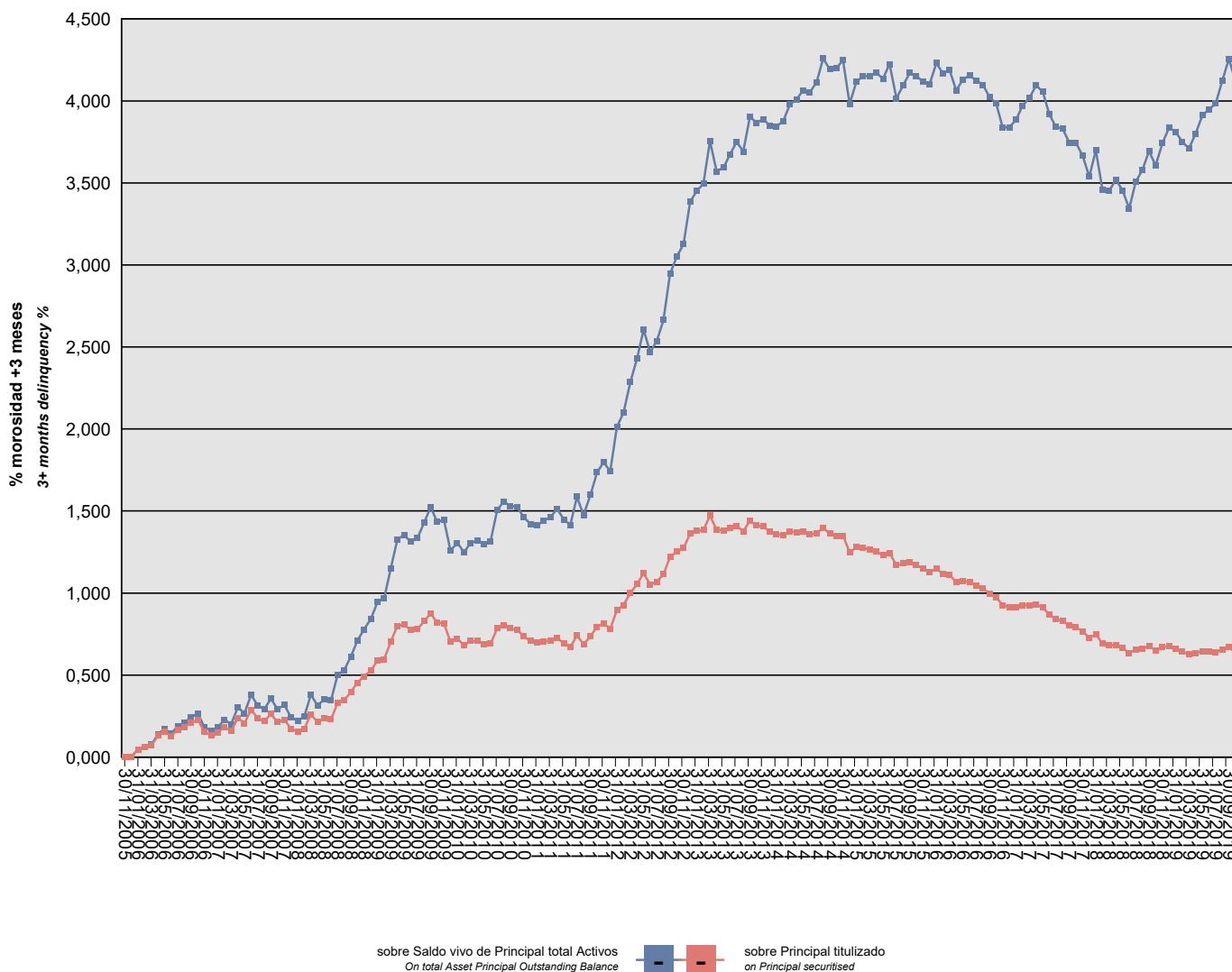
Delinquency analysis: 3+ months delinquency rate

Activos / Assets: Préstamos hipotecarios vivienda (CTHs) / Residential mortgage loans (PTCs)

Fecha / Date: 31/10/2019

Divisa / Currency: EUR

Esta serie histórica calculada a esta fecha puede diferir de las series históricas calculadas con anterioridad a consecuencia de cobros de los activos titulizados comunicados o modificados por el Administrador correspondiente con posterioridad a sus fechas de efectividad / This historical series calculated as at today's date may differ from previously calculated historical series following collections of the securitised assets communicated or modified by the relevant Servicer after their effective dates



RURAL HIPOTECARIO GLOBAL I Fondo de Titulización de Activos

Cartera de Activos Titulizados / Portfolio of Securitised Assets

Análisis de morosidad: Tasa de morosidad +3 meses

Delinquency analysis: 3+ months delinquency rate

Activos / Assets: Préstamos hipotecarios vivienda (CTHs) / Residential mortgage loans (PTCs)

Fecha / Date: 31/10/2019

Divisa / Currency: EUR

Esta serie histórica calculada a esta fecha puede diferir de las series históricas calculadas con anterioridad a consecuencia de cobros de los activos titulizados comunicados o modificados por el Administrador correspondiente con posterioridad a sus fechas de efectividad / This historical series calculated as at today's date may differ from previously calculated historical series following collections of the securitised assets communicated or modified by the relevant Servicer after their effective dates

Fecha Date	Saldo vivo de Activos en mora (Ppal. Miles €) Delinquent Asset Outstanding Balance (€ thou. Principal)	% morosidad +3 meses 3+ months delinquency %	
		sobre Saldo vivo de Principal total Activos On total Asset Principal Outstanding Balance	sobre Principal titulado on Principal securitised
30/11/2005	0,000	0,00%	0,00%
31/12/2005	0,000	0,00%	0,00%
31/01/2006	476,445	0,05%	0,04%
28/02/2006	621,665	0,06%	0,06%
31/03/2006	752,680	0,08%	0,07%
30/04/2006	1.387,695	0,14%	0,13%
31/05/2006	1.672,560	0,17%	0,16%
30/06/2006	1.372,412	0,14%	0,13%
31/07/2006	1.787,454	0,19%	0,17%
31/08/2006	1.962,937	0,21%	0,18%
30/09/2006	2.255,770	0,24%	0,21%
31/10/2006	2.406,382	0,27%	0,23%
30/11/2006	1.622,106	0,18%	0,15%
31/12/2006	1.414,094	0,16%	0,13%
31/01/2007	1.575,519	0,18%	0,15%
28/02/2007	1.961,713	0,23%	0,18%
31/03/2007	1.682,270	0,20%	0,16%
30/04/2007	2.533,149	0,30%	0,24%
31/05/2007	2.200,569	0,27%	0,21%
30/06/2007	3.078,673	0,38%	0,29%
31/07/2007	2.524,849	0,31%	0,24%
31/08/2007	2.319,538	0,29%	0,22%
30/09/2007	2.794,529	0,36%	0,26%
31/10/2007	2.264,927	0,29%	0,21%
30/11/2007	2.426,026	0,32%	0,23%
31/12/2007	1.821,642	0,24%	0,17%
31/01/2008	1.664,724	0,22%	0,16%
29/02/2008	1.827,193	0,25%	0,17%
31/03/2008	2.782,681	0,38%	0,26%
30/04/2008	2.277,933	0,31%	0,21%
31/05/2008	2.522,148	0,35%	0,24%
30/06/2008	2.443,828	0,35%	0,23%
31/07/2008	3.503,663	0,50%	0,33%
31/08/2008	3.681,626	0,53%	0,35%
30/09/2008	4.209,377	0,61%	0,40%
31/10/2008	4.832,654	0,71%	0,45%
30/11/2008	5.244,194	0,78%	0,49%
31/12/2008	5.622,030	0,84%	0,53%
31/01/2009	6.268,897	0,95%	0,59%

RURAL HIPOTECARIO GLOBAL I Fondo de Titulización de Activos

Cartera de Activos Titulizados / Portfolio of Securitised Assets

Análisis de morosidad: Tasa de morosidad +3 meses

Delinquency analysis: 3+ months delinquency rate

Activos / Assets: Préstamos hipotecarios vivienda (CTHs) / Residential mortgage loans (PTCs)

Fecha / Date: 31/10/2019

Divisa / Currency: EUR

Esta serie histórica calculada a esta fecha puede diferir de las series históricas calculadas con anterioridad a consecuencia de cobros de los activos titulizados comunicados o modificados por el Administrador correspondiente con posterioridad a sus fechas de efectividad / This historical series calculated as at today's date may differ from previously calculated historical series following collections of the securitised assets communicated or modified by the relevant Servicer after their effective dates

Fecha Date	Saldo vivo de Activos en mora (Ppal. Miles €) Delinquent Asset Outstanding Balance (€ thou. Principal)	% morosidad +3 meses 3+ months delinquency %	
		sobre Saldo vivo de Principal total Activos On total Asset Principal Outstanding Balance	sobre Principal titulado on Principal securitised
28/02/2009	6.347,819	0,97%	0,60%
31/03/2009	7.483,721	1,15%	0,70%
30/04/2009	8.518,389	1,33%	0,80%
31/05/2009	8.613,548	1,35%	0,81%
30/06/2009	8.264,217	1,31%	0,78%
31/07/2009	8.305,228	1,33%	0,78%
31/08/2009	8.820,101	1,43%	0,83%
30/09/2009	9.334,434	1,52%	0,88%
31/10/2009	8.707,890	1,43%	0,82%
30/11/2009	8.691,919	1,45%	0,82%
31/12/2009	7.476,006	1,26%	0,70%
31/01/2010	7.687,658	1,31%	0,72%
28/02/2010	7.264,501	1,25%	0,68%
31/03/2010	7.530,203	1,31%	0,71%
30/04/2010	7.530,749	1,32%	0,71%
31/05/2010	7.347,060	1,30%	0,69%
30/06/2010	7.358,502	1,31%	0,69%
31/07/2010	8.360,856	1,51%	0,78%
31/08/2010	8.565,161	1,56%	0,80%
30/09/2010	8.353,953	1,53%	0,78%
31/10/2010	8.258,375	1,52%	0,78%
30/11/2010	7.840,351	1,46%	0,74%
31/12/2010	7.529,593	1,42%	0,71%
31/01/2011	7.418,889	1,41%	0,70%
28/02/2011	7.510,853	1,44%	0,71%
31/03/2011	7.557,233	1,46%	0,71%
30/04/2011	7.750,694	1,51%	0,73%
31/05/2011	7.368,221	1,45%	0,69%
30/06/2011	7.120,264	1,41%	0,67%
31/07/2011	7.924,658	1,59%	0,74%
31/08/2011	7.312,888	1,48%	0,69%
30/09/2011	7.848,127	1,60%	0,74%
31/10/2011	8.449,592	1,74%	0,79%
30/11/2011	8.676,941	1,80%	0,81%
31/12/2011	8.326,855	1,74%	0,78%
31/01/2012	9.541,788	2,01%	0,90%
29/02/2012	9.871,035	2,10%	0,93%
31/03/2012	10.656,209	2,29%	1,00%
30/04/2012	11.229,531	2,43%	1,05%

RURAL HIPOTECARIO GLOBAL I Fondo de Titulización de Activos

Cartera de Activos Titulizados / Portfolio of Securitised Assets

Análisis de morosidad: Tasa de morosidad +3 meses

Delinquency analysis: 3+ months delinquency rate

Activos / Assets: Préstamos hipotecarios vivienda (CTHs) / Residential mortgage loans (PTCs)

Fecha / Date: 31/10/2019

Divisa / Currency: EUR

Esta serie histórica calculada a esta fecha puede diferir de las series históricas calculadas con anterioridad a consecuencia de cobros de los activos titulizados comunicados o modificados por el Administrador correspondiente con posterioridad a sus fechas de efectividad / This historical series calculated as at today's date may differ from previously calculated historical series following collections of the securitised assets communicated or modified by the relevant Servicer after their effective dates

Fecha Date	Saldo vivo de Activos en mora (Ppal. Miles €) Delinquent Asset Outstanding Balance (€ thou. Principal)	% morosidad +3 meses 3+ months delinquency %	
		sobre Saldo vivo de Principal total Activos On total Asset Principal Outstanding Balance	sobre Principal titulado on Principal securitised
31/05/2012	11.939,014	2,61%	1,12%
30/06/2012	11.197,793	2,47%	1,05%
31/07/2012	11.386,627	2,54%	1,07%
31/08/2012	11.864,481	2,66%	1,11%
30/09/2012	12.995,573	2,94%	1,22%
31/10/2012	13.347,898	3,05%	1,25%
30/11/2012	13.564,566	3,13%	1,27%
31/12/2012	14.535,890	3,39%	1,36%
31/01/2013	14.689,299	3,45%	1,38%
28/02/2013	14.736,832	3,49%	1,38%
31/03/2013	15.672,829	3,75%	1,47%
30/04/2013	14.768,702	3,57%	1,39%
31/05/2013	14.713,315	3,59%	1,38%
30/06/2013	14.869,793	3,67%	1,40%
31/07/2013	15.014,762	3,75%	1,41%
31/08/2013	14.655,687	3,69%	1,38%
30/09/2013	15.340,432	3,90%	1,44%
31/10/2013	15.038,463	3,87%	1,41%
30/11/2013	14.967,920	3,89%	1,41%
31/12/2013	14.630,339	3,85%	1,37%
31/01/2014	14.459,463	3,85%	1,36%
28/02/2014	14.430,817	3,88%	1,35%
31/03/2014	14.632,681	3,98%	1,37%
30/04/2014	14.604,353	4,01%	1,37%
31/05/2014	14.654,137	4,06%	1,38%
30/06/2014	14.462,560	4,05%	1,36%
31/07/2014	14.523,113	4,11%	1,36%
31/08/2014	14.896,889	4,26%	1,40%
30/09/2014	14.496,361	4,19%	1,36%
31/10/2014	14.365,965	4,20%	1,35%
30/11/2014	14.379,227	4,25%	1,35%
31/12/2014	13.291,086	3,98%	1,25%
31/01/2015	13.624,439	4,12%	1,28%
28/02/2015	13.591,399	4,15%	1,28%
31/03/2015	13.463,945	4,15%	1,26%
30/04/2015	13.363,881	4,17%	1,25%
31/05/2015	13.110,162	4,13%	1,23%
30/06/2015	13.258,004	4,22%	1,24%
31/07/2015	12.451,284	4,02%	1,17%

RURAL HIPOTECARIO GLOBAL I Fondo de Titulización de Activos

Cartera de Activos Titulizados / Portfolio of Securitised Assets

Análisis de morosidad: Tasa de morosidad +3 meses

Delinquency analysis: 3+ months delinquency rate

Activos / Assets: Préstamos hipotecarios vivienda (CTHs) / Residential mortgage loans (PTCs)

Fecha / Date: 31/10/2019

Divisa / Currency: EUR

Esta serie histórica calculada a esta fecha puede diferir de las series históricas calculadas con anterioridad a consecuencia de cobros de los activos titulizados comunicados o modificados por el Administrador correspondiente con posterioridad a sus fechas de efectividad / This historical series calculated as at today's date may differ from previously calculated historical series following collections of the securitised assets communicated or modified by the relevant Servicer after their effective dates

Fecha Date	Saldo vivo de Activos en mora (Ppal. Miles €) Delinquent Asset Outstanding Balance (€ thou. Principal)	% morosidad +3 meses 3+ months delinquency %	
		sobre Saldo vivo de Principal total Activos On total Asset Principal Outstanding Balance	sobre Principal titulado on Principal securitised
31/08/2015	12.568,138	4,09%	1,18%
30/09/2015	12.673,479	4,17%	1,19%
31/10/2015	12.468,274	4,15%	1,17%
30/11/2015	12.223,944	4,12%	1,15%
31/12/2015	12.006,470	4,10%	1,13%
31/01/2016	12.225,854	4,23%	1,15%
29/02/2016	11.903,093	4,17%	1,12%
31/03/2016	11.843,578	4,19%	1,11%
30/04/2016	11.362,133	4,07%	1,07%
31/05/2016	11.423,606	4,13%	1,07%
30/06/2016	11.362,985	4,15%	1,07%
31/07/2016	11.135,187	4,12%	1,05%
31/08/2016	10.951,134	4,10%	1,03%
30/09/2016	10.607,558	4,02%	1,00%
31/10/2016	10.383,935	3,99%	0,97%
30/11/2016	9.865,731	3,84%	0,93%
31/12/2016	9.739,508	3,84%	0,91%
31/01/2017	9.743,348	3,88%	0,91%
28/02/2017	9.849,468	3,97%	0,92%
31/03/2017	9.855,006	4,02%	0,93%
30/04/2017	9.923,237	4,09%	0,93%
31/05/2017	9.715,615	4,06%	0,91%
30/06/2017	9.256,945	3,92%	0,87%
31/07/2017	8.966,572	3,84%	0,84%
31/08/2017	8.836,660	3,83%	0,83%
30/09/2017	8.532,182	3,74%	0,80%
31/10/2017	8.428,196	3,74%	0,79%
30/11/2017	8.161,478	3,67%	0,77%
31/12/2017	7.758,212	3,54%	0,73%
31/01/2018	7.967,678	3,70%	0,75%
28/02/2018	7.362,689	3,46%	0,69%
31/03/2018	7.250,080	3,45%	0,68%
30/04/2018	7.295,705	3,52%	0,68%
31/05/2018	7.074,524	3,45%	0,66%
30/06/2018	6.758,171	3,34%	0,63%
31/07/2018	6.997,758	3,51%	0,66%
31/08/2018	7.056,344	3,58%	0,66%
30/09/2018	7.199,030	3,69%	0,68%
31/10/2018	6.940,714	3,61%	0,65%

RURAL HIPOTECARIO GLOBAL I Fondo de Titulación de Activos

Cartera de Activos Titulizados / Portfolio of Securitised Assets

Análisis de morosidad: Tasa de morosidad +3 meses

Delinquency analysis: 3+ months delinquency rate

Activos / Assets: Préstamos hipotecarios vivienda (CTHs) / Residential mortgage loans (PTCs)

Fecha / Date: 31/10/2019

Divisa / Currency: EUR

Esta serie histórica calculada a esta fecha puede diferir de las series históricas calculadas con anterioridad a consecuencia de cobros de los activos titulizados comunicados o modificados por el Administrador correspondiente con posterioridad a sus fechas de efectividad / This historical series calculated as at today's date may differ from previously calculated historical series following collections of the securitised assets communicated or modified by the relevant Servicer after their effective dates

Fecha Date	Saldo vivo de Activos en mora (Ppal. Miles €) Delinquent Asset Outstanding Balance (€ thou. Principal)	% morosidad +3 meses 3+ months delinquency %	
		sobre Saldo vivo de Principal total Activos On total Asset Principal Outstanding Balance	sobre Principal titulado on Principal securitised
30/11/2018	7.120,353	3,74%	0,67%
31/12/2018	7.205,006	3,84%	0,68%
31/01/2019	7.035,138	3,81%	0,66%
28/02/2019	6.834,036	3,75%	0,64%
31/03/2019	6.673,669	3,71%	0,63%
30/04/2019	6.754,529	3,80%	0,63%
31/05/2019	6.863,547	3,91%	0,64%
30/06/2019	6.839,049	3,95%	0,64%
31/07/2019	6.820,404	3,98%	0,64%
31/08/2019	6.980,962	4,12%	0,66%
30/09/2019	7.118,755	4,26%	0,67%
31/10/2019	6.795,551	4,12%	0,64%