

RURAL HIPOTECARIO IX Fondo de Titulización de Activos

Cartera de Activos Titulizados / Portfolio of Securitised Assets

Análisis de morosidad: Tasa de recuperación¹ de mora +3 meses (años desde entrada en mora) - Detalle por trimestres de entrada en mora²

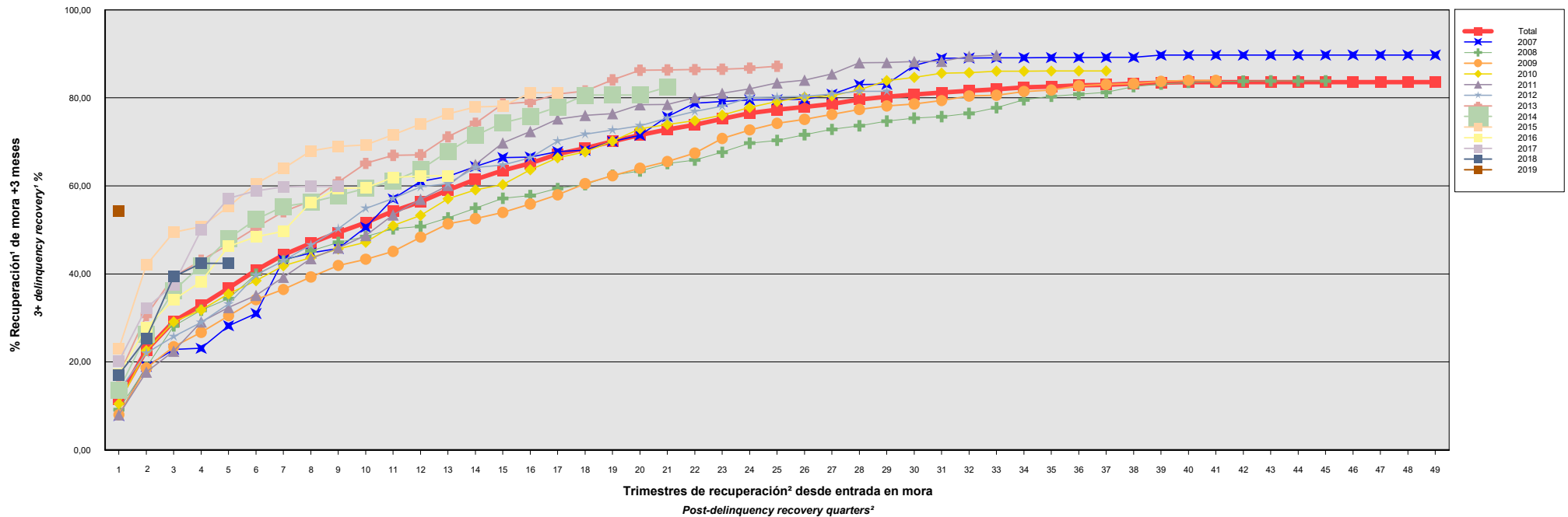
Delinquency analysis: 3+ months delinquency recovery¹ rate (years after delinquency occurs) - Detailed by quarters of occurrence²

Activos / Assets: Préstamos hipotecarios vivienda (CTHs) / Residential mortgage loans (PTCs)

Fecha / Date: 31/03/2019

Divisa / Currency: EUR

Esta serie histórica calculada a esta fecha puede diferir de las series históricas calculadas con anterioridad a consecuencia de cobros de los activos titulizados comunicados o modificados por el Administrador correspondiente con posterioridad a sus fechas de efectividad / This historical series calculated as at today's date may differ from previously calculated historical series following collections of the securitised assets communicated or modified by the relevant Servicer after their effective dates



¹ Incluye, en su caso, el valor neto contable (valor razonable minorado en un 25% como estimación costes de venta) de los inmuebles y activos no vendidos adjudicados o dados en pago al Fondo por activos titulizados. En los informes generados con anterioridad a agosto de 2015, los inmuebles adjudicados o dados en pago no vendidos se computaban en este informe por el valor de adquisición.

² Sólo se muestran datos de periodos en los que hay entradas de activos titulizados en mora por el plazo analizado.

¹ Includes, as the case may be, the net book value (fair value minus 25% as the estimated selling costs) of the unsold properties and assets awarded to or accepted in lieu of foreclosure by the Fund for securitised assets. In reports generated before August 2015, unsold properties awarded or accepted in lieu of foreclosure were accounted for in this report at the acquisition value.

² Details are only given for periods in which there are entries of securitised assets in arrears for the period analysed.

RURAL HIPOTECARIO IX Fondo de Titulización de Activos

Cartera de Activos Titulizados / Portfolio of Securitised Assets

Análisis de morosidad: Tasa de recuperación¹ de mora +3 meses (años desde entrada en mora) - Detalle por trimestres de entrada en mora²

Delinquency analysis: 3+ months delinquency recovery¹ rate (years after delinquency occurs) - Detailed by quarters of occurrence²

Activos / Assets: Préstamos hipotecarios vivienda (CTHs) / Residential mortgage loans (PTCs)

Fecha / Date: 31/03/2019

Divisa / Currency: EUR

Esta serie histórica calculada a esta fecha puede diferir de las series históricas calculadas con anterioridad a consecuencia de cobros de los activos titulizados comunicados o modificados por el Administrador correspondiente con posterioridad a sus fechas de efectividad / This historical series calculated as at today's date may differ from previously calculated historical series following collections of the securitised assets communicated or modified by the relevant Servicer after their effective dates

Entrada en mora Delinquency	Total	2007	2008	2009	2010	2011	2012	2013	2014	2015	2016	2017	2018	2019
Σ Saldo Vivo Activos entrada mora (Ppaal.Miles €) Outstanding Balance of Assets upon delinquency (€ thou. Principal) Σ	226.495,091	10.987,552	35.358,906	44.738,909	31.716,773	22.489,926	24.427,519	23.646,740	12.410,846	8.786,755	5.225,209	4.205,464	2.095,803	404,688
Nº Activos / Nº. of Assets	1.900	88	253	356	250	183	199	215	121	90	60	51	29	5
1	11,54%	7,84%	9,18%	8,01%	10,49%	7,98%	13,48%	16,87%	13,60%	22,97%	17,17%	20,16%	17,08%	54,24%
2	22,65%	19,00%	18,77%	18,62%	22,55%	17,73%	21,97%	30,58%	26,25%	42,01%	27,84%	32,24%	25,32%	
3	29,20%	22,87%	28,17%	23,48%	29,10%	22,46%	25,80%	39,39%	36,23%	49,47%	34,14%	37,54%	39,37%	
4	32,90%	23,10%	31,76%	26,74%	31,82%	29,11%	29,01%	43,10%	41,90%	50,77%	38,28%	49,97%	42,40%	
5	36,78%	28,23%	34,39%	30,48%	35,45%	32,35%	33,17%	46,65%	48,06%	55,26%	46,27%	57,18%	42,43%	
6	40,84%	31,00%	39,95%	34,20%	38,45%	35,14%	39,69%	50,52%	52,38%	60,54%	48,45%	58,86%		
7	44,31%	43,19%	42,94%	36,47%	41,82%	39,23%	43,03%	54,15%	55,34%	63,98%	49,67%	59,76%		
8	46,98%	44,76%	45,24%	39,29%	43,71%	43,46%	46,56%	56,55%	56,28%	67,95%	56,29%	59,90%		
9	49,41%	45,81%	47,16%	41,93%	45,67%	45,89%	50,27%	60,86%	57,82%	68,95%	59,43%	59,92%		
10	51,68%	50,59%	48,49%	43,34%	47,22%	48,74%	54,90%	65,11%	59,43%	69,32%	59,57%			
11	54,26%	57,05%	50,26%	45,11%	50,97%	53,40%	57,12%	66,94%	61,07%	71,60%	61,90%			
12	56,41%	61,00%	50,80%	48,36%	53,30%	56,97%	59,76%	67,05%	63,74%	74,05%	62,29%			
13	59,02%	62,16%	52,71%	51,36%	57,09%	60,09%	60,50%	71,15%	67,81%	76,35%	62,32%			
14	61,45%	64,39%	54,94%	52,55%	59,12%	64,87%	64,20%	74,22%	71,44%	77,95%				

¹ Incluye, en su caso, el valor neto contable (valor razonable minorado en un 25% como estimación costes de venta) de los inmuebles y activos no vendidos adjudicados o dados en pago al Fondo por activos titulizados. En los informes generados con anterioridad a agosto de 2015, los inmuebles adjudicados o dados en pago no vendidos se computaban en este informe por el valor de adquisición.

² Sólo se muestran datos de periodos en los que hay entradas de activos titulizados en mora por el plazo analizado.

¹ Includes, as the case may be, the net book value (fair value minus 25% as the estimated selling costs) of the unsold properties and assets awarded to or accepted in lieu of foreclosure by the Fund for securitised assets. In reports generated before August 2015, unsold properties awarded or accepted in lieu of foreclosure were accounted for in this report at the acquisition value.

² Details are only given for periods in which there are entries of securitised assets in arrears for the period analysed.

RURAL HIPOTECARIO IX Fondo de Titulización de Activos

Cartera de Activos Titulizados / Portfolio of Securitised Assets

Análisis de morosidad: Tasa de recuperación¹ de mora +3 meses (años desde entrada en mora) - Detalle por trimestres de entrada en mora²

Delinquency analysis: 3+ months delinquency recovery¹ rate (years after delinquency occurs) - Detailed by quarters of occurrence²

Activos / Assets: Préstamos hipotecarios vivienda (CTHs) / Residential mortgage loans (PTCs)

Fecha / Date: 31/03/2019

Divisa / Currency: EUR

Esta serie histórica calculada a esta fecha puede diferir de las series históricas calculadas con anterioridad a consecuencia de cobros de los activos titulizados comunicados o modificados por el Administrador correspondiente con posterioridad a sus fechas de efectividad / This historical series calculated as at today's date may differ from previously calculated historical series following collections of the securitised assets communicated or modified by the relevant Servicer after their effective dates

	Total	2007	2008	2009	2010	2011	2012	2013	2014	2015	2016	2017	2018	2019
15	63,51%	66,43%	57,17%	53,96%	60,29%	69,74%	64,74%	78,62%	74,35%	78,09%				
16	65,15%	66,55%	57,81%	55,89%	63,67%	72,35%	66,39%	79,05%	75,85%	81,17%				
17	67,25%	67,77%	59,42%	57,99%	66,37%	75,20%	70,18%	80,88%	77,96%	81,20%				
18	68,56%	68,11%	60,27%	60,51%	67,74%	76,03%	71,74%	81,57%	80,62%					
19	70,09%	70,10%	62,41%	62,33%	70,15%	76,42%	72,69%	84,07%	80,64%					
20	71,58%	71,51%	63,38%	64,02%	72,98%	78,44%	73,68%	86,29%	80,67%					
21	72,78%	75,74%	65,06%	65,51%	73,96%	78,52%	75,40%	86,35%	82,46%					
22	73,89%	78,78%	65,88%	67,47%	74,81%	80,05%	76,94%	86,43%						
23	75,24%	79,15%	67,65%	70,76%	76,06%	81,02%	78,11%	86,53%						
24	76,55%	79,51%	69,72%	72,72%	77,84%	82,06%	80,07%	86,76%						
25	77,33%	79,59%	70,35%	74,23%	79,15%	83,43%	80,17%	87,21%						
26	77,93%	79,66%	71,62%	75,10%	80,17%	84,04%	80,35%							
27	78,64%	80,83%	72,84%	76,25%	80,47%	85,41%	80,88%							
28	79,61%	83,01%	73,67%	77,38%	81,82%	87,99%	81,47%							
29	80,23%	83,11%	74,71%	78,15%	83,92%	88,01%	81,50%							
30	80,76%	87,34%	75,39%	78,61%	84,66%	88,28%								
31	81,18%	89,01%	75,72%	79,38%	85,62%	88,29%								
32	81,63%	89,05%	76,47%	80,40%	85,74%	89,44%								
33	81,94%	89,08%	77,76%	80,58%	86,04%	89,73%								
34	82,40%	89,11%	79,56%	81,46%	86,08%									

¹ Incluye, en su caso, el valor neto contable (valor razonable minorado en un 25% como estimación costes de venta) de los inmuebles y activos no vendidos adjudicados o dados en pago al Fondo por activos titulizados. En los informes generados con anterioridad a agosto de 2015, los inmuebles adjudicados o dados en pago no vendidos se computaban en este informe por el valor de adquisición.

² Sólo se muestran datos de periodos en los que hay entradas de activos titulizados en mora por el plazo analizado.

¹ Includes, as the case may be, the net book value (fair value minus 25% as the estimated selling costs) of the unsold properties and assets awarded to or accepted in lieu of foreclosure by the Fund for securitised assets. In reports generated before August 2015, unsold properties awarded or accepted in lieu of foreclosure were accounted for in this report at the acquisition value.

² Details are only given for periods in which there are entries of securitised assets in arrears for the period analysed.

RURAL HIPOTECARIO IX Fondo de Titulización de Activos

Cartera de Activos Titulizados / Portfolio of Securitised Assets

Análisis de morosidad: Tasa de recuperación¹ de mora +3 meses (años desde entrada en mora) - Detalle por trimestres de entrada en mora²

Delinquency analysis: 3+ months delinquency recovery¹ rate (years after delinquency occurs) - Detailed by quarters of occurrence²

Activos / Assets: Préstamos hipotecarios vivienda (CTHs) / Residential mortgage loans (PTCs)

Fecha / Date: 31/03/2019

Divisa / Currency: EUR

Esta serie histórica calculada a esta fecha puede diferir de las series históricas calculadas con anterioridad a consecuencia de cobros de los activos titulizados comunicados o modificados por el Administrador correspondiente con posterioridad a sus fechas de efectividad / This historical series calculated as at today's date may differ from previously calculated historical series following collections of the securitised assets communicated or modified by the relevant Servicer after their effective dates

	Total	2007	2008	2009	2010	2011	2012	2013	2014	2015	2016	2017	2018	2019
35	82,59%	89,14%	80,35%	81,79%	86,09%									
36	82,85%	89,15%	80,82%	82,73%	86,10%									
37	82,98%	89,20%	81,24%	83,05%	86,10%									
38	83,23%	89,20%	82,55%	83,26%										
39	83,44%	89,70%	83,13%	83,73%										
40	83,55%	89,70%	83,50%	84,00%										
41	83,59%	89,71%	83,77%	84,00%										
42	83,59%	89,71%	83,79%											
43	83,60%	89,72%	83,84%											
44	83,60%	89,72%	83,84%											
45	83,60%	89,73%	83,84%											
46	83,60%	89,74%												
47	83,60%	89,74%												
48	83,60%	89,74%												
49	83,60%	89,74%												

¹ Incluye, en su caso, el valor neto contable (valor razonable minorado en un 25% como estimación costes de venta) de los inmuebles y activos no vendidos adjudicados o dados en pago al Fondo por activos titulizados. En los informes generados con anterioridad a agosto de 2015, los inmuebles adjudicados o dados en pago no vendidos se computaban en este informe por el valor de adquisición.

² Sólo se muestran datos de periodos en los que hay entradas de activos titulizados en mora por el plazo analizado.

¹ Includes, as the case may be, the net book value (fair value minus 25% as the estimated selling costs) of the unsold properties and assets awarded to or accepted in lieu of foreclosure by the Fund for securitised assets. In reports generated before August 2015, unsold properties awarded or accepted in lieu of foreclosure were accounted for in this report at the acquisition value.

² Details are only given for periods in which there are entries of securitised assets in arrears for the period analysed.