

# BANCAJA 9 Fondo de Titulización de Activos

## Cartera de Activos Titulizados / Portfolio of Securitised Assets

**Análisis de morosidad:** Tasa de entrada acumulada en mora +3 meses (trimestres naturales desde constitución Fondo) - Detalle por años originación activos

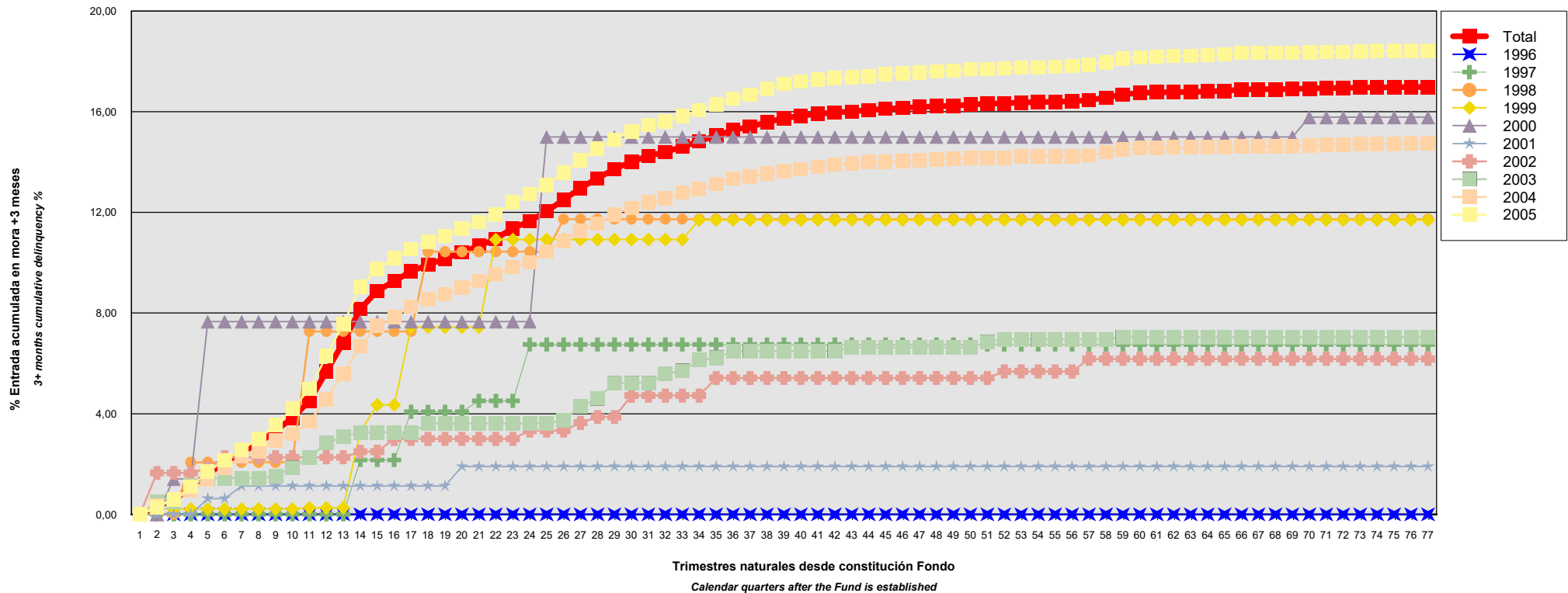
**Delinquency analysis:** 3+ months cumulative delinquency rate (calendar quarters after the Fund is established) - Detailed by asset origination years

**Activos / Assets:** Préstamos hipotecarios vivienda (CTHs) / Residential mortgage loans (PTCs)

**Fecha / Date:** 28/02/2025

**Divisa / Currency:** EUR

Esta serie histórica calculada a esta fecha puede diferir de las series históricas calculadas con anterioridad a consecuencia de cobros o actualización de información de los activos titulizados comunicados o modificados por el Administrador correspondiente con posterioridad a sus fechas de efectividad / This historical series calculated as at today's date may differ from previously calculated historical series following collections or information update of the securitised assets communicated or modified by the relevant Servicer after their effective dates



## BANCAJA 9 Fondo de Titulización de Activos

### Cartera de Activos Titulizados / Portfolio of Securitised Assets

**Análisis de morosidad:** Tasa de entrada acumulada en mora +3 meses (trimestres naturales desde constitución Fondo) - Detalle por años originación activos

**Delinquency analysis:** 3+ months cumulative delinquency rate (calendar quarters after the Fund is established) - Detailed by asset origination years

**Activos / Assets:** Préstamos hipotecarios vivienda (CTHs) / Residential mortgage loans (PTCs)

**Fecha / Date:** 28/02/2025

**Divisa / Currency:** EUR

Esta serie histórica calculada a esta fecha puede diferir de las series históricas calculadas con anterioridad a consecuencia de cobros o actualización de información de los activos titulizados comunicados o modificados por el Administrador correspondiente con posterioridad a sus fechas de efectividad / This historical series calculated as at today's date may differ from previously calculated historical series following collections or information update of the securitised assets communicated or modified by the relevant Servicer after their effective dates

Originación activo Asset origination	Total	1996	1997	1998	1999	2000	2001	2002	2003	2004	2005
Principal titulizado (mill. €) Principal securitised (€ million)	2.000,095	0,060	0,882	1,416	2,787	2,693	5,689	15,755	38,711	574,937	1.357,164
Nº activos / Nº. of assets	15.759	4	27	46	61	20	43	133	307	4.672	10.446
1	0,00% 0	0,00% 0	0,00% 0	0,00% 0	0,00% 0	0,00% 0	0,00% 0	0,00% 0	0,00% 0	0,00% 0	0,00% 0
2	0,32% 60	0,00% 0	0,00% 0	0,00% 0	0,21% 1	0,00% 0	0,00% 0	1,65% 3	0,52% 1	0,35% 18	0,29% 37
3	0,59% 108	0,00% 0	0,00% 0	0,00% 0	0,21% 1	1,41% 1	0,00% 0	1,65% 3	0,52% 1	0,58% 29	0,58% 73
4	1,05% 189	0,00% 0	0,00% 0	2,07% 1	0,21% 1	1,41% 1	0,00% 0	1,65% 3	1,15% 4	0,94% 49	1,10% 130
5	1,61% 271	0,00% 0	0,00% 0	2,07% 1	0,21% 1	7,66% 4	0,63% 1	1,84% 4	1,44% 6	1,41% 70	1,70% 184
6	2,04% 336	0,00% 0	0,00% 0	2,07% 1	0,21% 1	7,66% 4	0,63% 1	2,27% 5	1,44% 6	1,85% 89	2,14% 229
7	2,47% 405	0,00% 0	0,00% 0	2,07% 1	0,21% 1	7,66% 4	1,13% 2	2,27% 5	1,44% 6	2,31% 107	2,57% 279
8	2,82% 466	0,00% 0	0,00% 0	2,07% 1	0,21% 1	7,66% 4	1,13% 2	2,27% 5	1,44% 6	2,52% 121	3,00% 326
9	3,33% 541	0,00% 0	0,00% 0	2,07% 1	0,21% 1	7,66% 4	1,13% 2	2,27% 5	1,53% 7	2,95% 136	3,57% 385
10	3,83% 626	0,00% 0	0,00% 0	2,07% 1	0,21% 1	7,66% 4	1,13% 2	2,27% 5	1,85% 8	3,19% 150	4,19% 455
11	4,52% 743	0,00% 0	0,00% 0	7,27% 2	0,26% 2	7,66% 4	1,13% 2	2,27% 5	2,27% 9	3,69% 176	4,98% 543
12	5,68% 916	0,00% 0	0,00% 0	7,27% 2	0,26% 2	7,66% 4	1,13% 2	2,27% 5	2,84% 11	4,58% 214	6,29% 676
13	6,83% 1.115	0,00% 0	0,00% 0	7,27% 2	0,26% 2	7,66% 4	1,13% 2	2,27% 5	3,08% 12	5,60% 271	7,56% 817
14	8,16% 1.336	0,00% 0	2,16% 1	7,27% 2	3,28% 3	7,66% 4	1,13% 2	2,49% 6	3,26% 14	6,68% 326	9,04% 978
15	8,88% 1.454	0,00% 0	2,16% 1	7,27% 2	4,35% 4	7,66% 4	1,13% 2	2,49% 6	3,26% 14	7,51% 364	9,75% 1.057
16	9,27% 1.508	0,00% 0	2,16% 1	7,27% 2	4,35% 4	7,66% 4	1,13% 2	3,00% 7	3,26% 14	7,84% 376	10,18% 1.098
17	9,65% 1.571	0,00% 0	4,08% 2	7,27% 2	7,44% 5	7,66% 4	1,13% 2	3,00% 7	3,26% 14	8,27% 397	10,55% 1.138
18	9,93% 1.617	0,00% 0	4,08% 2	10,44% 3	7,44% 5	7,66% 4	1,13% 2	3,00% 7	3,61% 16	8,54% 410	10,83% 1.168

## BANCAJA 9 Fondo de Titulización de Activos

### Cartera de Activos Titulizados / Portfolio of Securitised Assets

**Análisis de morosidad: Tasa de entrada acumulada en mora +3 meses (trimestres naturales desde constitución Fondo) - Detalle por años originación activos**

**Delinquency analysis: 3+ months cumulative delinquency rate (calendar quarters after the Fund is established) - Detailed by asset origination years**

**Activos / Assets: Préstamos hipotecarios vivienda (CTHs) / Residential mortgage loans (PTCs)**

**Fecha / Date: 28/02/2025**

**Divisa / Currency: EUR**

Esta serie histórica calculada a esta fecha puede diferir de las series históricas calculadas con anterioridad a consecuencia de cobros o actualización de información de los activos titulizados comunicados o modificados por el Administrador correspondiente con posterioridad a sus fechas de efectividad / This historical series calculated as at today's date may differ from previously calculated historical series following collections or information update of the securitised assets communicated or modified by the relevant Servicer after their effective dates

	Total	1996	1997	1998	1999	2000	2001	2002	2003	2004	2005
19	10,16%1.651	0,00% 0	4,08% 2	10,44% 3	7,44% 5	7,66% 4	1,13% 2	3,00% 7	3,61% 16	8,74% 419	11,08%1.193
20	10,42%1.703	0,00% 0	4,08% 2	10,44% 3	7,44% 5	7,66% 4	1,90% 3	3,00% 7	3,61% 16	9,01% 433	11,35%1.230
21	10,67%1.745	0,00% 0	4,51% 3	10,44% 3	7,44% 5	7,66% 4	1,90% 3	3,00% 7	3,61% 16	9,26% 446	11,62%1.258
22	10,95%1.798	0,00% 0	4,51% 3	10,44% 3	10,92% 6	7,66% 4	1,90% 3	3,00% 7	3,61% 16	9,53% 460	11,90%1.296
23	11,37%1.871	0,00% 0	4,51% 3	10,44% 3	10,92% 6	7,66% 4	1,90% 3	3,00% 7	3,61% 16	9,84% 476	12,39%1.353
24	11,65%1.926	0,00% 0	6,75% 4	10,44% 3	10,92% 6	7,66% 4	1,90% 3	3,33% 8	3,61% 16	10,02% 487	12,73%1.395
25	12,04%1.987	0,00% 0	6,75% 4	10,44% 3	10,92% 6	15,00% 5	1,90% 3	3,33% 8	3,61% 16	10,44% 508	13,10%1.434
26	12,50%2.070	0,00% 0	6,75% 4	11,73% 4	10,92% 6	15,00% 5	1,90% 3	3,33% 8	3,75% 17	10,88% 536	13,59%1.487
27	12,96%2.166	0,00% 0	6,75% 4	11,73% 4	10,92% 6	15,00% 5	1,90% 3	3,64% 9	4,29% 20	11,27% 565	14,08%1.550
28	13,36%2.247	0,00% 0	6,75% 4	11,73% 4	10,92% 6	15,00% 5	1,90% 3	3,87% 10	4,61% 21	11,56% 586	14,53%1.608
29	13,72%2.316	0,00% 0	6,75% 4	11,73% 4	10,92% 6	15,00% 5	1,90% 3	3,87% 10	5,22% 23	11,92% 607	14,90%1.654
30	14,02%2.375	0,00% 0	6,75% 4	11,73% 4	10,92% 6	15,00% 5	1,90% 3	4,72% 11	5,22% 23	12,19% 622	15,21%1.697
31	14,24%2.417	0,00% 0	6,75% 4	11,73% 4	10,92% 6	15,00% 5	1,90% 3	4,72% 11	5,22% 23	12,40% 634	15,46%1.727
32	14,40%2.448	0,00% 0	6,75% 4	11,73% 4	10,92% 6	15,00% 5	1,90% 3	4,72% 11	5,59% 24	12,55% 642	15,62%1.749
33	14,61%2.489	0,00% 0	6,75% 4	11,73% 4	10,92% 6	15,00% 5	1,90% 3	4,72% 11	5,70% 25	12,78% 655	15,83%1.776
34	14,83%2.530	0,00% 0	6,75% 4	11,73% 4	11,70% 7	15,00% 5	1,90% 3	4,72% 11	6,14% 27	12,92% 661	16,07%1.808
35	15,05%2.570	0,00% 0	6,75% 4	11,73% 4	11,70% 7	15,00% 5	1,90% 3	5,42% 12	6,23% 28	13,14% 674	16,30%1.833
36	15,27%2.619	0,00% 0	6,75% 4	11,73% 4	11,70% 7	15,00% 5	1,90% 3	5,42% 12	6,49% 29	13,35% 686	16,52%1.869
37	15,40%2.646	0,00% 0	6,75% 4	11,73% 4	11,70% 7	15,00% 5	1,90% 3	5,42% 12	6,49% 29	13,43% 691	16,68%1.891
38	15,59%2.684	0,00% 0	6,75% 4	11,73% 4	11,70% 7	15,00% 5	1,90% 3	5,42% 12	6,49% 29	13,54% 700	16,91%1.920
39	15,74%2.713	0,00% 0	6,75% 4	11,73% 4	11,70% 7	15,00% 5	1,90% 3	5,42% 12	6,49% 29	13,63% 707	17,10%1.942
40	15,84%2.734	0,00% 0	6,75% 4	11,73% 4	11,70% 7	15,00% 5	1,90% 3	5,42% 12	6,49% 29	13,70% 712	17,21%1.958
41	15,91%2.750	0,00% 0	6,75% 4	11,73% 4	11,70% 7	15,00% 5	1,90% 3	5,42% 12	6,49% 29	13,81% 719	17,27%1.967

## BANCAJA 9 Fondo de Titulización de Activos

### Cartera de Activos Titulizados / Portfolio of Securitised Assets

**Análisis de morosidad:** Tasa de entrada acumulada en mora +3 meses (trimestres naturales desde constitución Fondo) - Detalle por años originación activos

**Delinquency analysis:** 3+ months cumulative delinquency rate (calendar quarters after the Fund is established) - Detailed by asset origination years

**Activos / Assets:** Préstamos hipotecarios vivienda (CTHs) / Residential mortgage loans (PTCs)

**Fecha / Date:** 28/02/2025

**Divisa / Currency:** EUR

Esta serie histórica calculada a esta fecha puede diferir de las series históricas calculadas con anterioridad a consecuencia de cobros o actualización de información de los activos titulizados comunicados o modificados por el Administrador correspondiente con posterioridad a sus fechas de efectividad / This historical series calculated as at today's date may differ from previously calculated historical series following collections or information update of the securitised assets communicated or modified by the relevant Servicer after their effective dates

	Total	1996	1997	1998	1999	2000	2001	2002	2003	2004	2005
42	15,97%2.763	0,00% 0	6,75% 4	11,73% 4	11,70% 7	15,00% 5	1,90% 3	5,42% 12	6,49% 29	13,89% 725	17,33%1.974
43	16,01%2.774	0,00% 0	6,75% 4	11,73% 4	11,70% 7	15,00% 5	1,90% 3	5,42% 12	6,63% 30	13,94% 729	17,37%1.980
44	16,07%2.785	0,00% 0	6,75% 4	11,73% 4	11,70% 7	15,00% 5	1,90% 3	5,42% 12	6,63% 30	14,01% 734	17,41%1.986
45	16,12%2.797	0,00% 0	6,75% 4	11,73% 4	11,70% 7	15,00% 5	1,90% 3	5,42% 12	6,63% 30	14,02% 735	17,49%1.997
46	16,15%2.802	0,00% 0	6,75% 4	11,73% 4	11,70% 7	15,00% 5	1,90% 3	5,42% 12	6,63% 30	14,03% 736	17,52%2.001
47	16,19%2.808	0,00% 0	6,75% 4	11,73% 4	11,70% 7	15,00% 5	1,90% 3	5,42% 12	6,63% 30	14,06% 738	17,57%2.005
48	16,22%2.816	0,00% 0	6,75% 4	11,73% 4	11,70% 7	15,00% 5	1,90% 3	5,42% 12	6,63% 30	14,11% 741	17,60%2.010
49	16,24%2.820	0,00% 0	6,75% 4	11,73% 4	11,70% 7	15,00% 5	1,90% 3	5,42% 12	6,63% 30	14,12% 742	17,62%2.013
50	16,29%2.832	0,00% 0	6,75% 4	11,73% 4	11,70% 7	15,00% 5	1,90% 3	5,42% 12	6,63% 30	14,16% 744	17,68%2.023
51	16,31%2.838	0,00% 0	6,75% 4	11,73% 4	11,70% 7	15,00% 5	1,90% 3	5,42% 12	6,85% 31	14,17% 746	17,69%2.026
52	16,33%2.848	0,00% 0	6,75% 4	11,73% 4	11,70% 7	15,00% 5	1,90% 3	5,68% 13	6,96% 32	14,18% 748	17,72%2.032
53	16,36%2.857	0,00% 0	6,75% 4	11,73% 4	11,70% 7	15,00% 5	1,90% 3	5,68% 13	6,96% 32	14,22% 752	17,75%2.037
54	16,38%2.861	0,00% 0	6,75% 4	11,73% 4	11,70% 7	15,00% 5	1,90% 3	5,68% 13	6,96% 32	14,23% 753	17,77%2.040
55	16,39%2.863	0,00% 0	6,75% 4	11,73% 4	11,70% 7	15,00% 5	1,90% 3	5,68% 13	6,96% 32	14,23% 753	17,79%2.042
56	16,41%2.866	0,00% 0	6,75% 4	11,73% 4	11,70% 7	15,00% 5	1,90% 3	5,68% 13	6,96% 32	14,23% 753	17,81%2.045
57	16,46%2.877	0,00% 0	6,75% 4	11,73% 4	11,70% 7	15,00% 5	1,90% 3	6,18% 14	6,96% 32	14,27% 755	17,87%2.053
58	16,56%2.895	0,00% 0	6,75% 4	11,73% 4	11,70% 7	15,00% 5	1,90% 3	6,18% 14	6,96% 32	14,38% 762	17,96%2.064
59	16,69%2.925	0,00% 0	6,75% 4	11,73% 4	11,70% 7	15,00% 5	1,90% 3	6,18% 14	7,04% 33	14,49% 770	18,10%2.089
60	16,75%2.943	0,00% 0	6,75% 4	11,73% 4	11,70% 7	15,00% 5	1,90% 3	6,18% 14	7,04% 33	14,55% 774	18,17%2.099
61	16,77%2.947	0,00% 0	6,75% 4	11,73% 4	11,70% 7	15,00% 5	1,90% 3	6,18% 14	7,04% 33	14,56% 775	18,19%2.102
62	16,78%2.951	0,00% 0	6,75% 4	11,73% 4	11,70% 7	15,00% 5	1,90% 3	6,18% 14	7,04% 33	14,58% 777	18,21%2.104
63	16,79%2.953	0,00% 0	6,75% 4	11,73% 4	11,70% 7	15,00% 5	1,90% 3	6,18% 14	7,04% 33	14,59% 778	18,21%2.105
64	16,81%2.955	0,00% 0	6,75% 4	11,73% 4	11,70% 7	15,00% 5	1,90% 3	6,18% 14	7,04% 33	14,59% 778	18,24%2.111

## BANCAJA 9 Fondo de Titulización de Activos

### Cartera de Activos Titulizados / Portfolio of Securitised Assets

**Análisis de morosidad:** Tasa de entrada acumulada en mora +3 meses (trimestres naturales desde constitución Fondo) - Detalle por años originación activos

**Delinquency analysis:** 3+ months cumulative delinquency rate (calendar quarters after the Fund is established) - Detailed by asset origination years

**Activos / Assets:** Préstamos hipotecarios vivienda (CTHs) / Residential mortgage loans (PTCs)

**Fecha / Date:** 28/02/2025

**Divisa / Currency:** EUR

Esta serie histórica calculada a esta fecha puede diferir de las series históricas calculadas con anterioridad a consecuencia de cobros o actualización de información de los activos titulizados comunicados o modificados por el Administrador correspondiente con posterioridad a sus fechas de efectividad / This historical series calculated as at today's date may differ from previously calculated historical series following collections or information update of the securitised assets communicated or modified by the relevant Servicer after their effective dates

	Total	1996	1997	1998	1999	2000	2001	2002	2003	2004	2005
65	16,83%2.966	0,00% 0	6,75% 4	11,73% 4	11,70% 7	15,00% 5	1,90% 3	6,18% 14	7,04% 33	14,59% 778	18,27%2.118
66	16,88%2.980	0,00% 0	6,75% 4	11,73% 4	11,70% 7	15,00% 5	1,90% 3	6,18% 14	7,04% 33	14,62% 781	18,34%2.129
67	16,89%2.982	0,00% 0	6,75% 4	11,73% 4	11,70% 7	15,00% 5	1,90% 3	6,18% 14	7,04% 33	14,62% 781	18,34%2.131
68	16,89%2.984	0,00% 0	6,75% 4	11,73% 4	11,70% 7	15,00% 5	1,90% 3	6,18% 14	7,04% 33	14,63% 782	18,35%2.132
69	16,90%2.985	0,00% 0	6,75% 4	11,73% 4	11,70% 7	15,00% 5	1,90% 3	6,18% 14	7,04% 33	14,63% 782	18,35%2.133
70	16,92%2.993	0,00% 0	6,75% 4	11,73% 4	11,70% 7	15,78% 6	1,90% 3	6,18% 14	7,04% 33	14,66% 785	18,37%2.137
71	16,94%3.000	0,00% 0	6,75% 4	11,73% 4	11,70% 7	15,78% 6	1,90% 3	6,18% 14	7,04% 33	14,69% 788	18,38%2.141
72	16,94%3.001	0,00% 0	6,75% 4	11,73% 4	11,70% 7	15,78% 6	1,90% 3	6,18% 14	7,04% 33	14,70% 789	18,38%2.141
73	16,96%3.006	0,00% 0	6,75% 4	11,73% 4	11,70% 7	15,78% 6	1,90% 3	6,18% 14	7,04% 33	14,72% 791	18,40%2.144
74	16,96%3.005	0,00% 0	6,75% 4	11,73% 4	11,70% 7	15,78% 6	1,90% 3	6,18% 14	7,04% 33	14,73% 792	18,41%2.146
75	16,97%3.013	0,00% 0	6,75% 4	11,73% 4	11,70% 7	15,78% 6	1,90% 3	6,18% 14	7,04% 33	14,73% 792	18,42%2.150
76	16,98%3.016	0,00% 0	6,75% 4	11,73% 4	11,70% 7	15,78% 6	1,90% 3	6,18% 14	7,04% 33	14,74% 794	18,42%2.151
77	16,98%3.018	0,00% 0	6,75% 4	11,73% 4	11,70% 7	15,78% 6	1,90% 3	6,18% 14	7,04% 33	14,74% 795	18,43%2.152