

# HIPOCAT 8 Fondo de Titulización de Activos

## Cartera de Activos Titulizados / Portfolio of Securitised Assets

**Análisis de morosidad:** Tasa de entrada acumulada en mora +3 meses (trimestres naturales desde constitución Fondo) - Detalle por años originación activos

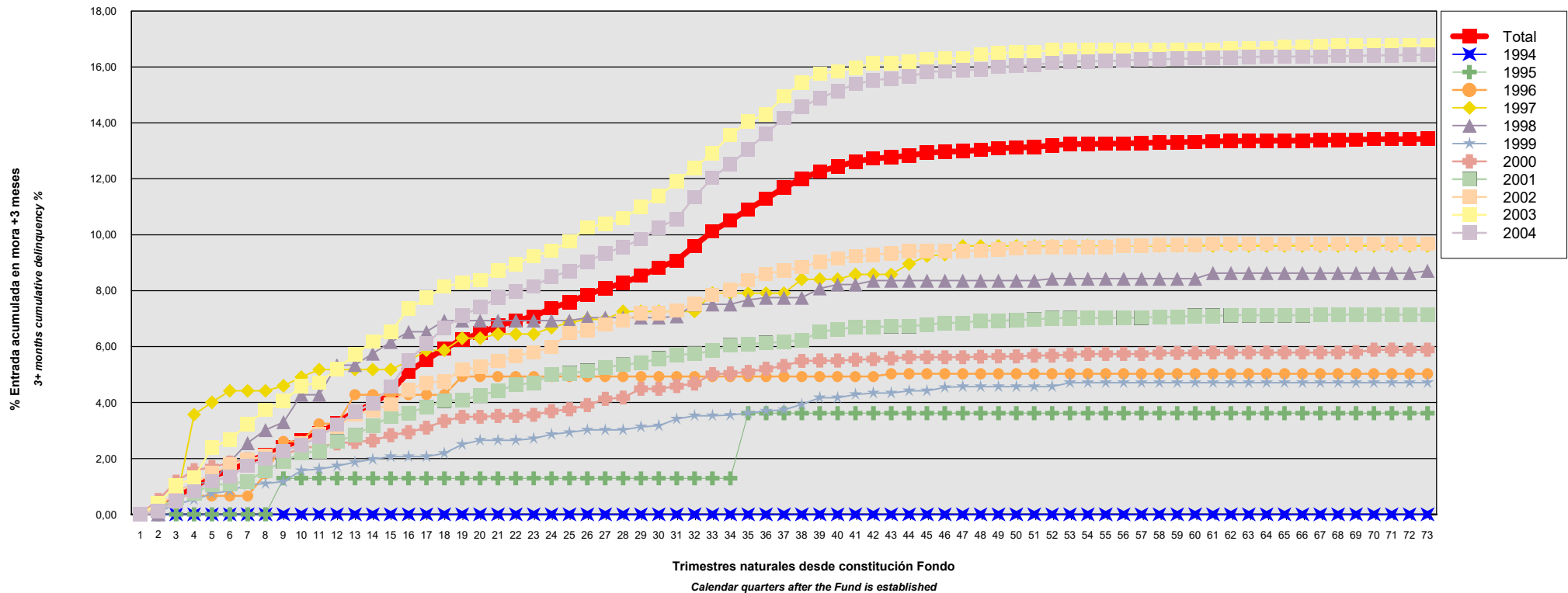
**Delinquency analysis:** 3+ months cumulative delinquency rate (calendar quarters after the Fund is established) - Detailed by asset origination years

**Activos / Assets:** Préstamos hipotecarios vivienda (CTHs) / Residential mortgage loans (PTCs)

**Fecha / Date:** 30/04/2023

**Divisa / Currency:** EUR

Esta serie histórica calculada a esta fecha puede diferir de las series históricas calculadas con anterioridad a consecuencia de cobros o actualización de información de los activos titulizados comunicados o modificados por el Administrador correspondiente con posterioridad a sus fechas de efectividad / This historical series calculated as at today's date may differ from previously calculated historical series following collections or information update of the securitised assets communicated or modified by the relevant Servicer after their effective dates



## HIPOCAT 8 Fondo de Titulización de Activos

### Cartera de Activos Titulizados / Portfolio of Securitised Assets

**Análisis de morosidad:** Tasa de entrada acumulada en mora +3 meses (trimestres naturales desde constitución Fondo) - Detalle por años originación activos

**Delinquency analysis:** 3+ months cumulative delinquency rate (calendar quarters after the Fund is established) - Detailed by asset origination years

**Activos / Assets:** Préstamos hipotecarios vivienda (CTHs) / Residential mortgage loans (PTCs)

**Fecha / Date:** 30/04/2023

**Divisa / Currency:** EUR

Esta serie histórica calculada a esta fecha puede diferir de las series históricas calculadas con anterioridad a consecuencia de cobros o actualización de información de los activos titulizados comunicados o modificados por el Administrador correspondiente con posterioridad a sus fechas de efectividad / This historical series calculated as at today's date may differ from previously calculated historical series following collections or information update of the securitised assets communicated or modified by the relevant Servicer after their effective dates

Origenación activo Asset origination	Total	1994	1995	1996	1997	1998	1999	2000	2001	2002	2003	2004
Principal titulizado (mill. €) Principal securitised (€ million)	1.500,008	0,628	1,734	4,727	11,327	16,250	58,393	103,211	125,456	197,340	150,296	830,646
Nº activos / Nº. of assets	15.465	15	46	108	225	315	1.023	1.654	1.833	2.437	1.317	6.492
1	0,00% 0	0,00% 0	0,00% 0	0,00% 0	0,00% 0	0,00% 0	0,00% 0	0,00% 0	0,00% 0	0,00% 0	0,00% 0	0,00% 0
2	0,20% 33	0,00% 0	0,00% 0	0,00% 0	0,43% 1	0,00% 0	0,09% 1	0,52% 6	0,22% 5	0,28% 6	0,40% 6	0,11% 8
3	0,64% 108	0,00% 0	0,00% 0	0,66% 1	0,43% 1	0,79% 3	0,36% 4	1,17% 17	0,58% 11	0,78% 19	1,03% 16	0,49% 36
4	0,97% 162	0,00% 0	0,00% 0	0,66% 1	3,57% 7	1,13% 4	0,53% 6	1,58% 23	0,77% 13	1,10% 27	1,31% 21	0,84% 60
5	1,37% 222	0,00% 0	0,00% 0	0,66% 1	4,01% 8	1,13% 4	0,74% 9	1,69% 26	1,06% 18	1,47% 35	2,39% 34	1,19% 87
6	1,56% 252	0,00% 0	0,00% 0	0,66% 1	4,42% 9	1,88% 6	0,85% 10	1,85% 28	1,09% 19	1,77% 42	2,67% 39	1,35% 98
7	1,88% 299	0,00% 0	0,00% 0	0,66% 1	4,42% 9	2,55% 8	1,05% 13	1,98% 31	1,18% 21	1,94% 45	3,23% 46	1,74% 125
8	2,13% 337	0,00% 0	0,00% 0	1,45% 2	4,42% 9	3,02% 9	1,10% 14	2,02% 32	1,57% 27	2,09% 48	3,73% 53	1,98% 143
9	2,39% 378	0,00% 0	1,29% 1	2,61% 3	4,60% 10	3,30% 10	1,17% 15	2,10% 33	1,89% 33	2,27% 52	4,05% 58	2,28% 163
10	2,66% 420	0,00% 0	1,29% 1	2,61% 3	4,91% 11	4,28% 13	1,57% 18	2,39% 38	2,19% 38	2,53% 57	4,60% 64	2,47% 177
11	2,90% 456	0,00% 0	1,29% 1	3,24% 4	5,18% 12	4,28% 13	1,62% 19	2,41% 39	2,27% 40	2,86% 63	4,72% 66	2,77% 199
12	3,28% 508	0,00% 0	1,29% 1	3,24% 4	5,18% 12	5,34% 16	1,73% 20	2,54% 42	2,61% 47	3,13% 68	5,19% 74	3,20% 224
13	3,68% 560	0,00% 0	1,29% 1	4,28% 5	5,18% 12	5,34% 16	1,86% 22	2,59% 43	2,84% 52	3,58% 79	5,73% 79	3,67% 251
14	3,95% 596	0,00% 0	1,29% 1	4,28% 5	5,18% 12	5,75% 17	1,97% 23	2,64% 44	3,17% 57	3,72% 83	6,18% 84	3,97% 270
15	4,39% 655	0,00% 0	1,29% 1	4,28% 5	5,18% 12	6,16% 18	2,07% 24	2,83% 47	3,50% 62	3,94% 86	6,53% 89	4,57% 311
16	5,09% 746	0,00% 0	1,29% 1	4,28% 5	5,48% 13	6,53% 20	2,07% 24	2,94% 50	3,63% 64	4,46% 97	7,35% 101	5,51% 371
17	5,53% 803	0,00% 0	1,29% 1	4,28% 5	5,87% 14	6,53% 20	2,07% 24	3,10% 53	3,84% 68	4,70% 103	7,74% 106	6,11% 409
18	5,92% 853	0,00% 0	1,29% 1	4,28% 5	5,87% 14	6,93% 21	2,18% 26	3,34% 55	4,07% 72	4,76% 105	8,14% 112	6,67% 442

## HIPOCAT 8 Fondo de Titulización de Activos

### Cartera de Activos Titulizados / Portfolio of Securitised Assets

**Análisis de morosidad:** Tasa de entrada acumulada en mora +3 meses (trimestres naturales desde constitución Fondo) - Detalle por años originación activos

**Delinquency analysis:** 3+ months cumulative delinquency rate (calendar quarters after the Fund is established) - Detailed by asset origination years

**Activos / Assets:** Préstamos hipotecarios vivienda (CTHs) / Residential mortgage loans (PTCs)

**Fecha / Date:** 30/04/2023

**Divisa / Currency:** EUR

Esta serie histórica calculada a esta fecha puede diferir de las series históricas calculadas con anterioridad a consecuencia de cobros o actualización de información de los activos titulizados comunicados o modificados por el Administrador correspondiente con posterioridad a sus fechas de efectividad / This historical series calculated as at today's date may differ from previously calculated historical series following collections or information update of the securitised assets communicated or modified by the relevant Servicer after their effective dates

	Total	1994	1995	1996	1997	1998	1999	2000	2001	2002	2003	2004
19	6,26% 897	0,00% 0	1,29% 1	4,93% 6	6,30% 15	6,93% 21	2,50% 28	3,49% 57	4,09% 73	5,18% 111	8,29% 114	7,10% 471
20	6,48% 925	0,00% 0	1,29% 1	4,93% 6	6,30% 15	6,93% 21	2,65% 29	3,49% 57	4,26% 78	5,28% 114	8,37% 115	7,42% 489
21	6,74% 959	0,00% 0	1,29% 1	4,93% 6	6,45% 16	6,93% 21	2,65% 29	3,52% 58	4,42% 81	5,48% 120	8,71% 118	7,74% 509
22	6,93% 989	0,00% 0	1,29% 1	4,93% 6	6,45% 16	6,93% 21	2,65% 29	3,52% 58	4,64% 86	5,68% 125	8,95% 122	7,96% 525
23	7,08% 1.013	0,00% 0	1,29% 1	4,93% 6	6,45% 16	6,93% 21	2,71% 30	3,56% 59	4,70% 87	5,78% 128	9,23% 126	8,15% 539
24	7,37% 1.055	0,00% 0	1,29% 1	4,93% 6	6,68% 17	6,93% 21	2,86% 32	3,69% 61	4,99% 91	6,00% 134	9,43% 129	8,50% 563
25	7,59% 1.086	0,00% 0	1,29% 1	4,93% 6	6,86% 18	6,93% 21	2,93% 33	3,76% 62	5,05% 93	6,48% 143	9,76% 133	8,70% 576
26	7,86% 1.124	0,00% 0	1,29% 1	4,93% 6	6,97% 20	7,04% 22	3,02% 34	3,91% 64	5,13% 94	6,57% 146	10,27% 140	9,04% 597
27	8,09% 1.155	0,00% 0	1,29% 1	4,93% 6	6,97% 20	7,04% 22	3,02% 35	4,13% 67	5,25% 97	6,78% 151	10,39% 142	9,34% 618
28	8,27% 1.186	0,00% 0	1,29% 1	4,93% 6	7,26% 22	7,04% 22	3,02% 35	4,18% 69	5,36% 99	6,93% 154	10,60% 145	9,56% 633
29	8,53% 1.222	0,00% 0	1,29% 1	4,93% 6	7,26% 22	7,04% 22	3,13% 36	4,49% 72	5,42% 100	7,19% 159	10,99% 150	9,84% 654
30	8,82% 1.255	0,00% 0	1,29% 1	4,93% 6	7,26% 22	7,04% 22	3,17% 37	4,49% 72	5,57% 101	7,19% 159	11,38% 155	10,26% 680
31	9,08% 1.294	0,00% 0	1,29% 1	4,93% 6	7,26% 22	7,08% 23	3,41% 39	4,59% 75	5,71% 104	7,30% 161	11,90% 164	10,56% 699
32	9,61% 1.363	0,00% 0	1,29% 1	4,93% 6	7,26% 22	7,51% 26	3,53% 41	4,68% 77	5,74% 105	7,52% 168	12,40% 170	11,35% 747
33	10,13% 1.437	0,00% 0	1,29% 1	4,93% 6	7,91% 24	7,51% 26	3,53% 41	5,02% 82	5,86% 108	7,86% 177	12,92% 177	12,04% 795
34	10,51% 1.495	0,00% 0	1,29% 1	4,93% 6	7,91% 24	7,51% 26	3,55% 42	5,04% 83	6,05% 113	8,04% 183	13,56% 187	12,53% 830
35	10,91% 1.558	0,00% 0	3,62% 3	4,93% 6	7,91% 24	7,67% 27	3,62% 43	5,10% 84	6,08% 114	8,39% 193	14,06% 194	13,06% 870
36	11,29% 1.611	0,00% 0	3,62% 3	4,93% 6	7,91% 24	7,75% 28	3,70% 45	5,21% 87	6,13% 115	8,59% 198	14,31% 197	13,62% 908
37	11,68% 1.668	0,00% 0	3,62% 3	4,93% 6	7,91% 24	7,75% 28	3,74% 46	5,31% 89	6,17% 117	8,72% 202	14,95% 205	14,17% 948
38	12,00% 1.716	0,00% 0	3,62% 3	4,93% 6	8,41% 25	7,75% 28	3,93% 47	5,49% 92	6,23% 118	8,84% 207	15,44% 211	14,58% 979
39	12,27% 1.757	0,00% 0	3,62% 3	4,93% 6	8,41% 25	8,08% 29	4,17% 50	5,50% 93	6,52% 125	9,03% 213	15,77% 215	14,88% 998
40	12,44% 1.787	0,00% 0	3,62% 3	4,93% 6	8,41% 25	8,22% 30	4,17% 50	5,50% 93	6,62% 127	9,14% 218	15,85% 216	15,15% 1.019
41	12,62% 1.817	0,00% 0	3,62% 3	4,93% 6	8,58% 26	8,22% 30	4,29% 52	5,53% 94	6,70% 129	9,23% 221	15,97% 218	15,39% 1.038

## HIPOCAT 8 Fondo de Titulización de Activos

### Cartera de Activos Titulizados / Portfolio of Securitised Assets

**Análisis de morosidad:** Tasa de entrada acumulada en mora +3 meses (trimestres naturales desde constitución Fondo) - Detalle por años originación activos

**Delinquency analysis:** 3+ months cumulative delinquency rate (calendar quarters after the Fund is established) - Detailed by asset origination years

**Activos / Assets:** Préstamos hipotecarios vivienda (CTHs) / Residential mortgage loans (PTCs)

**Fecha / Date:** 30/04/2023

**Divisa / Currency:** EUR

Esta serie histórica calculada a esta fecha puede diferir de las series históricas calculadas con anterioridad a consecuencia de cobros o actualización de información de los activos titulizados comunicados o modificados por el Administrador correspondiente con posterioridad a sus fechas de efectividad / This historical series calculated as at today's date may differ from previously calculated historical series following collections or information update of the securitised assets communicated or modified by the relevant Servicer after their effective dates

	Total	1994	1995	1996	1997	1998	1999	2000	2001	2002	2003	2004
42	12,72%1.837	0,00% 0	3,62% 3	4,93% 6	8,58% 26	8,36% 31	4,34% 53	5,55% 95	6,70% 129	9,27% 223	16,12% 220	15,52%1.051
43	12,77%1.851	0,00% 0	3,62% 3	5,03% 8	8,58% 26	8,36% 31	4,34% 53	5,58% 96	6,73% 131	9,34% 224	16,14% 221	15,59%1.058
44	12,83%1.860	0,00% 0	3,62% 3	5,03% 8	8,96% 27	8,36% 31	4,42% 55	5,62% 97	6,73% 131	9,41% 225	16,18% 222	15,65%1.061
45	12,93%1.878	0,00% 0	3,62% 3	5,03% 8	9,24% 28	8,36% 31	4,42% 55	5,62% 97	6,79% 133	9,41% 225	16,26% 223	15,82%1.075
46	12,97%1.886	0,00% 0	3,62% 3	5,03% 8	9,29% 29	8,36% 31	4,54% 56	5,62% 97	6,85% 134	9,41% 225	16,31% 224	15,85%1.079
47	12,99%1.891	0,00% 0	3,62% 3	5,03% 8	9,60% 30	8,36% 31	4,57% 57	5,62% 97	6,85% 134	9,41% 225	16,31% 224	15,89%1.082
48	13,03%1.902	0,00% 0	3,62% 3	5,03% 8	9,60% 30	8,36% 31	4,57% 57	5,64% 98	6,93% 137	9,44% 226	16,45% 227	15,91%1.085
49	13,09%1.915	0,00% 0	3,62% 3	5,03% 8	9,60% 30	8,36% 31	4,57% 57	5,65% 99	6,93% 137	9,48% 229	16,48% 228	16,01%1.093
50	13,12%1.921	0,00% 0	3,62% 3	5,03% 8	9,60% 30	8,36% 31	4,57% 57	5,65% 99	6,95% 138	9,52% 230	16,53% 229	16,04%1.096
51	13,14%1.927	0,00% 0	3,62% 3	5,03% 8	9,60% 30	8,36% 31	4,57% 57	5,68% 100	6,97% 139	9,53% 231	16,53% 229	16,07%1.099
52	13,20%1.940	0,00% 0	3,62% 3	5,03% 8	9,60% 30	8,43% 32	4,57% 57	5,68% 100	7,02% 140	9,56% 233	16,61% 230	16,15%1.107
53	13,24%1.949	0,00% 0	3,62% 3	5,03% 8	9,60% 30	8,43% 32	4,71% 59	5,71% 101	7,02% 140	9,56% 233	16,61% 230	16,20%1.113
54	13,24%1.953	0,00% 0	3,62% 3	5,03% 8	9,60% 30	8,43% 32	4,71% 59	5,74% 103	7,03% 141	9,56% 233	16,61% 230	16,20%1.114
55	13,25%1.954	0,00% 0	3,62% 3	5,03% 8	9,60% 30	8,43% 32	4,71% 59	5,74% 103	7,03% 141	9,56% 233	16,61% 230	16,21%1.115
56	13,27%1.958	0,00% 0	3,62% 3	5,03% 8	9,60% 30	8,43% 32	4,71% 59	5,74% 103	7,03% 141	9,62% 235	16,61% 230	16,23%1.117
57	13,28%1.962	0,00% 0	3,62% 3	5,03% 8	9,60% 30	8,43% 32	4,71% 59	5,74% 103	7,04% 142	9,62% 235	16,61% 230	16,26%1.120
58	13,30%1.968	0,00% 0	3,62% 3	5,03% 8	9,60% 30	8,43% 32	4,71% 59	5,77% 104	7,06% 143	9,64% 236	16,61% 230	16,27%1.123
59	13,31%1.970	0,00% 0	3,62% 3	5,03% 8	9,60% 30	8,43% 32	4,71% 59	5,77% 104	7,06% 143	9,64% 236	16,61% 230	16,29%1.125
60	13,32%1.972	0,00% 0	3,62% 3	5,03% 8	9,60% 30	8,43% 32	4,71% 59	5,77% 104	7,10% 144	9,64% 236	16,61% 230	16,30%1.126
61	13,34%1.978	0,00% 0	3,62% 3	5,03% 8	9,60% 30	8,63% 33	4,71% 59	5,79% 105	7,10% 144	9,67% 237	16,61% 230	16,33%1.129
62	13,35%1.983	0,00% 0	3,62% 3	5,03% 8	9,60% 30	8,63% 33	4,71% 59	5,79% 105	7,12% 145	9,67% 238	16,68% 231	16,34%1.131
63	13,36%1.984	0,00% 0	3,62% 3	5,03% 8	9,60% 30	8,63% 33	4,71% 59	5,79% 105	7,12% 145	9,67% 238	16,68% 231	16,35%1.132
64	13,37%1.985	0,00% 0	3,62% 3	5,03% 8	9,60% 30	8,63% 33	4,71% 59	5,79% 105	7,12% 145	9,67% 238	16,68% 231	16,37%1.133

## HIPOCAT 8 Fondo de Titulización de Activos

### Cartera de Activos Titulizados / Portfolio of Securitised Assets

**Análisis de morosidad:** Tasa de entrada acumulada en mora +3 meses (trimestres naturales desde constitución Fondo) - Detalle por años originación activos

**Delinquency analysis:** 3+ months cumulative delinquency rate (calendar quarters after the Fund is established) - Detailed by asset origination years

**Activos / Assets:** Préstamos hipotecarios vivienda (CTHs) / Residential mortgage loans (PTCs)

**Fecha / Date:** 30/04/2023

**Divisa / Currency:** EUR

Esta serie histórica calculada a esta fecha puede diferir de las series históricas calculadas con anterioridad a consecuencia de cobros o actualización de información de los activos titulizados comunicados o modificados por el Administrador correspondiente con posterioridad a sus fechas de efectividad / This historical series calculated as at today's date may differ from previously calculated historical series following collections or information update of the securitised assets communicated or modified by the relevant Servicer after their effective dates

	Total	1994	1995	1996	1997	1998	1999	2000	2001	2002	2003	2004
65	13,37%1.986	0,00% 0	3,62% 3	5,03% 8	9,60% 30	8,63% 33	4,71% 59	5,79% 105	7,12% 145	9,67% 238	16,72% 232	16,37%1.133
66	13,37%1.987	0,00% 0	3,62% 3	5,03% 8	9,60% 30	8,63% 33	4,71% 59	5,79% 105	7,12% 145	9,67% 238	16,72% 232	16,37%1.134
67	13,39%1.990	0,00% 0	3,62% 3	5,03% 8	9,60% 30	8,63% 33	4,71% 59	5,79% 105	7,14% 146	9,67% 238	16,76% 233	16,38%1.135
68	13,39%1.993	0,00% 0	3,62% 3	5,03% 8	9,60% 30	8,63% 33	4,71% 59	5,79% 105	7,14% 146	9,67% 238	16,78% 234	16,39%1.137
69	13,40%1.995	0,00% 0	3,62% 3	5,03% 8	9,60% 30	8,63% 33	4,71% 59	5,80% 106	7,14% 146	9,67% 238	16,78% 234	16,40%1.138
70	13,42%2.002	0,00% 0	3,62% 3	5,03% 8	9,60% 30	8,63% 33	4,71% 59	5,89% 108	7,14% 146	9,67% 239	16,78% 234	16,42%1.142
71	13,42%2.002	0,00% 0	3,62% 3	5,03% 8	9,60% 30	8,63% 33	4,71% 59	5,89% 108	7,14% 146	9,67% 239	16,78% 234	16,42%1.142
72	13,42%2.005	0,00% 0	3,62% 3	5,03% 8	9,60% 30	8,63% 33	4,71% 59	5,89% 108	7,14% 146	9,68% 240	16,78% 234	16,43%1.144
73	13,43%2.007	0,00% 0	3,62% 3	5,03% 8	9,60% 30	8,71% 34	4,71% 59	5,89% 108	7,14% 146	9,68% 240	16,78% 234	16,43%1.145