

# HIPOCAT 11 Fondo de Titulización de Activos

## Cartera de Activos Titulizados / Portfolio of Securitised Assets

**Análisis de morosidad:** Tasa de entrada acumulada en mora +3 meses (trimestres naturales desde constitución Fondo) - Detalle por años originación activos

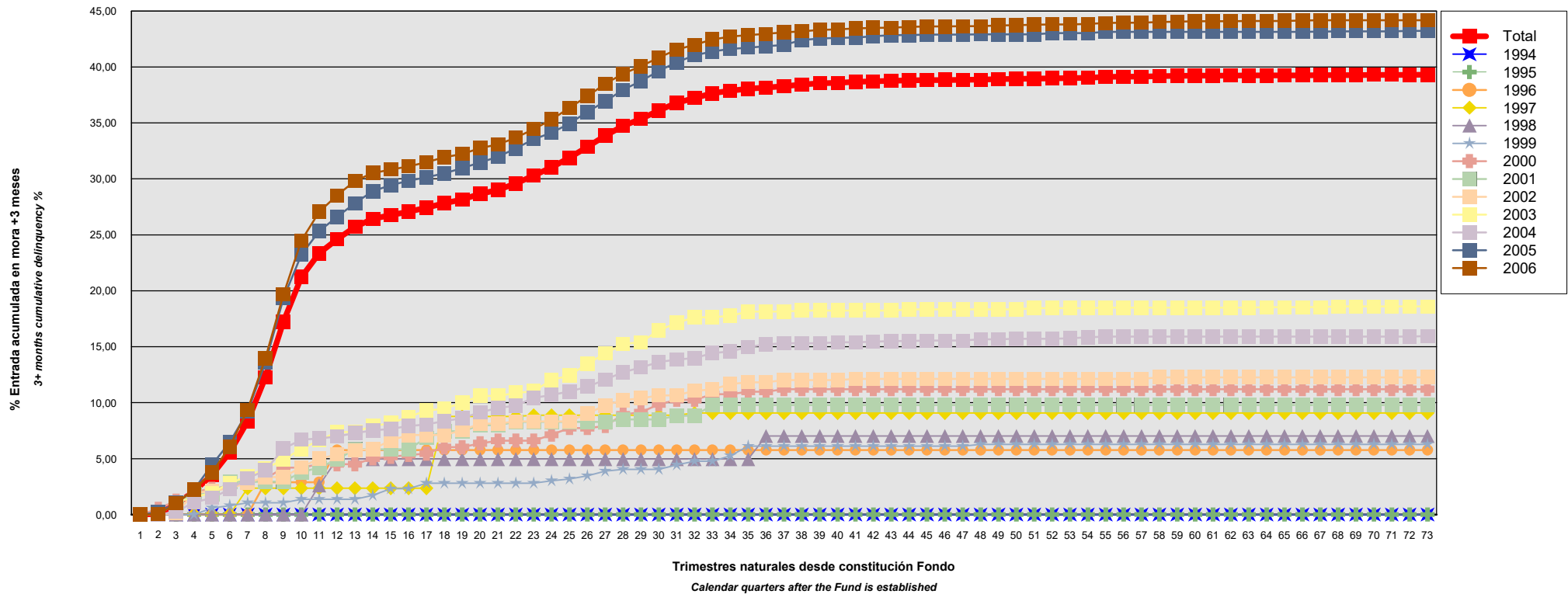
**Delinquency analysis:** 3+ months cumulative delinquency rate (calendar quarters after the Fund is established) - Detailed by asset origination years

**Activos / Assets:** Préstamos hipotecarios vivienda (CTHS) / Residential mortgage loans (PTCs)

**Fecha / Date:** 28/02/2025

**Divisa / Currency:** EUR

Esta serie histórica calculada a esta fecha puede diferir de las series históricas calculadas con anterioridad a consecuencia de cobros o actualización de información de los activos titulizados comunicados o modificados por el Administrador correspondiente con posterioridad a sus fechas de efectividad / This historical series calculated as at today's date may differ from previously calculated historical series following collections or information update of the securitised assets communicated or modified by the relevant Servicer after their effective dates



# HIPOCAT 11 Fondo de Titulización de Activos

## Cartera de Activos Titulizados / Portfolio of Securitised Assets

**Análisis de morosidad:** Tasa de entrada acumulada en mora +3 meses (trimestres naturales desde constitución Fondo) - Detalle por años originación activos

**Delinquency analysis:** 3+ months cumulative delinquency rate (calendar quarters after the Fund is established) - Detailed by asset origination years

**Activos / Assets:** Préstamos hipotecarios vivienda (CTHs) / Residential mortgage loans (PTCs)

**Fecha / Date:** 28/02/2025

**Divisa / Currency:** EUR

Esta serie histórica calculada a esta fecha puede diferir de las series históricas calculadas con anterioridad a consecuencia de cobros o actualización de información de los activos titulizados comunicados o modificados por el Administrador correspondiente con posterioridad a sus fechas de efectividad / This historical series calculated as at today's date may differ from previously calculated historical series following collections or information update of the securitised assets communicated or modified by the relevant Servicer after their effective dates

Originación activo Asset origination	Total	1994	1995	1996	1997	1998	1999	2000	2001	2002	2003	2004	2005	2006
Principal titulizado (mill. €) Principal securitised (€ million)	1.600,000	0,016	0,103	0,782	2,087	1,996	14,576	16,896	15,122	25,087	50,931	127,024	314,249	1.031,132
Nº activos / Nº. of assets	10.635	1	3	22	40	39	308	326	237	356	655	1.277	1.892	5.479
1	0,00% 0	0,00% 0	0,00% 0	0,00% 0	0,00% 0	0,00% 0	0,00% 0	0,00% 0	0,00% 0	0,00% 0	0,00% 0	0,00% 0	0,00% 0	0,00% 0
2	0,06% 8	0,00% 0	0,00% 0	0,00% 0	0,00% 0	0,00% 0	0,00% 0	0,51% 2	0,00% 0	0,00% 0	0,06% 1	0,00% 0	0,21% 4	0,02% 1
3	0,92% 96	0,00% 0	0,00% 0	0,00% 0	0,00% 0	0,00% 0	0,00% 0	1,26% 4	1,04% 3	0,13% 1	1,09% 7	0,26% 5	1,02% 21	0,99% 55
4	2,09% 206	0,00% 0	0,00% 0	0,00% 0	0,00% 0	0,00% 0	0,00% 0	2,03% 6	1,83% 5	1,92% 6	1,57% 9	1,10% 16	2,25% 43	2,24% 121
5	3,54% 337	0,00% 0	0,00% 0	0,00% 0	0,00% 0	0,00% 0	0,59% 2	2,31% 8	1,83% 5	2,12% 7	1,94% 11	1,48% 21	4,43% 83	3,74% 200
6	5,56% 501	0,00% 0	0,00% 0	0,00% 0	0,00% 0	0,00% 0	0,80% 3	2,56% 9	2,93% 7	2,35% 8	2,81% 15	2,27% 27	6,47% 117	6,08% 315
7	8,32% 728	0,00% 0	0,00% 0	0,00% 0	2,35% 1	0,00% 0	1,06% 4	2,86% 10	2,93% 7	2,83% 10	3,43% 19	3,22% 35	9,19% 166	9,37% 476
8	12,26% 1.058	0,00% 0	0,00% 0	2,90% 1	2,35% 1	0,00% 0	1,06% 4	3,20% 11	2,93% 7	3,36% 13	4,13% 23	3,98% 45	13,59% 241	13,98% 712
9	17,25% 1.461	0,00% 0	0,00% 0	2,90% 1	2,35% 1	0,00% 0	1,06% 4	4,20% 15	2,93% 7	3,36% 13	4,91% 28	5,89% 62	19,34% 339	19,69% 991
10	21,22% 1.801	0,00% 0	0,00% 0	2,90% 1	2,35% 1	0,00% 0	1,37% 5	4,20% 15	3,80% 9	4,24% 16	5,87% 31	6,69% 72	23,23% 411	24,49% 1.240
11	23,35% 1.996	0,00% 0	0,00% 0	2,90% 1	2,35% 1	2,61% 1	1,37% 5	4,50% 17	4,20% 10	5,00% 18	6,63% 35	6,81% 74	25,32% 451	27,06% 1.383
12	24,60% 2.114	0,00% 0	0,00% 0	5,77% 2	2,35% 1	4,96% 2	1,37% 5	4,50% 17	4,92% 11	5,37% 19	7,37% 39	6,98% 76	26,60% 476	28,53% 1.466
13	25,70% 2.217	0,00% 0	0,00% 0	5,77% 2	2,35% 1	4,96% 2	1,37% 5	4,50% 17	5,84% 12	5,74% 20	7,37% 39	7,28% 80	27,82% 503	29,81% 1.536
14	26,43% 2.286	0,00% 0	0,00% 0	5,77% 2	2,35% 1	4,96% 2	1,71% 6	5,02% 19	5,84% 12	5,86% 21	7,90% 43	7,52% 82	28,90% 522	30,53% 1.576
15	26,76% 2.324	0,00% 0	0,00% 0	5,77% 2	2,35% 1	4,96% 2	2,31% 7	5,16% 20	5,84% 12	6,62% 23	8,18% 44	7,66% 85	29,44% 532	30,83% 1.596
16	27,08% 2.358	0,00% 0	0,00% 0	5,77% 2	2,35% 1	4,96% 2	2,31% 7	5,33% 21	5,84% 12	7,12% 24	8,72% 47	7,92% 89	29,83% 539	31,12% 1.614
17	27,42% 2.393	0,00% 0	0,00% 0	5,77% 2	2,35% 1	4,96% 2	2,80% 8	5,45% 22	6,86% 13	7,12% 24	9,29% 49	8,06% 91	30,15% 545	31,49% 1.636
18	27,83% 2.438	0,00% 0	0,00% 0	5,77% 2	8,78% 2	4,96% 2	2,80% 8	6,02% 23	7,44% 14	7,12% 24	9,45% 50	8,36% 95	30,49% 553	31,94% 1.665

# HIPOCAT 11 Fondo de Titulización de Activos

## Cartera de Activos Titulizados / Portfolio of Securitised Assets

**Análisis de morosidad:** Tasa de entrada acumulada en mora +3 meses (trimestres naturales desde constitución Fondo) - Detalle por años originación activos

**Delinquency analysis:** 3+ months cumulative delinquency rate (calendar quarters after the Fund is established) - Detailed by asset origination years

**Activos / Assets:** Préstamos hipotecarios vivienda (CTHs) / Residential mortgage loans (PTCs)

**Fecha / Date:** 28/02/2025

**Divisa / Currency:** EUR

Esta serie histórica calculada a esta fecha puede diferir de las series históricas calculadas con anterioridad a consecuencia de cobros o actualización de información de los activos titulizados comunicados o modificados por el Administrador correspondiente con posterioridad a sus fechas de efectividad / This historical series calculated as at today's date may differ from previously calculated historical series following collections or information update of the securitised assets communicated or modified by the relevant Servicer after their effective dates

	Total	1994	1995	1996	1997	1998	1999	2000	2001	2002	2003	2004	2005	2006
19	28,15%2.475	0,00% 0	0,00% 0	5,77% 2	8,78% 2	4,96% 2	2,80% 8	6,02% 23	7,44% 14	7,53% 26	10,00% 53	8,61% 99	30,97% 563	32,22%1.683
20	28,67%2.525	0,00% 0	0,00% 0	5,77% 2	8,78% 2	4,96% 2	2,80% 8	6,37% 24	7,99% 15	8,12% 27	10,61% 57	9,15% 104	31,46% 572	32,76%1.712
21	29,01%2.559	0,00% 0	0,00% 0	5,77% 2	8,78% 2	4,96% 2	2,80% 8	6,61% 25	7,99% 15	8,12% 27	10,61% 57	9,53% 109	31,98% 582	33,08%1.730
22	29,58%2.614	0,00% 0	0,00% 0	5,77% 2	8,78% 2	4,96% 2	2,80% 8	6,61% 25	8,29% 16	8,33% 28	10,88% 59	9,75% 112	32,72% 597	33,68%1.763
23	30,30%2.677	0,00% 0	0,00% 0	5,77% 2	8,88% 3	4,96% 2	2,80% 8	6,61% 25	8,29% 16	8,33% 28	11,03% 60	10,42% 118	33,55% 612	34,45%1.803
24	31,02%2.743	0,00% 0	0,00% 0	5,77% 2	8,88% 3	4,96% 2	3,02% 9	7,14% 27	8,29% 16	8,33% 28	12,05% 65	10,70% 121	34,12% 622	35,30%1.848
25	31,90%2.823	0,00% 0	0,00% 0	5,77% 2	8,88% 3	4,96% 2	3,18% 10	7,73% 29	8,29% 16	8,33% 28	12,41% 68	11,01% 125	34,93% 636	36,35%1.904
26	32,86%2.914	0,00% 0	0,00% 0	5,77% 2	8,88% 3	4,96% 2	3,46% 11	7,73% 29	8,29% 16	9,03% 30	13,51% 75	11,43% 129	35,99% 657	37,40%1.960
27	33,85%3.014	0,00% 0	0,00% 0	5,77% 2	8,88% 3	4,96% 2	3,89% 13	7,92% 30	8,29% 16	9,76% 32	14,38% 81	12,06% 136	36,92% 676	38,50%2.023
28	34,74%3.101	0,00% 0	0,00% 0	5,77% 2	8,88% 3	4,96% 2	4,04% 14	8,94% 33	8,51% 17	10,22% 33	15,25% 85	12,72% 143	37,97% 697	39,40%2.072
29	35,36%3.163	0,00% 0	0,00% 0	5,77% 2	8,88% 3	4,96% 2	4,04% 14	9,15% 34	8,51% 17	10,39% 34	15,40% 87	13,15% 147	38,75% 712	40,06%2.111
30	36,12%3.239	0,00% 0	0,00% 0	5,77% 2	8,88% 3	4,96% 2	4,04% 14	9,86% 36	8,51% 17	10,65% 35	16,47% 92	13,64% 153	39,64% 729	40,83%2.156
31	36,79%3.300	0,00% 0	0,00% 0	5,77% 2	8,88% 3	4,96% 2	4,44% 15	10,25% 38	8,83% 18	10,65% 35	17,13% 95	13,85% 155	40,43% 744	41,55%2.193
32	37,22%3.354	0,00% 0	0,00% 0	5,77% 2	9,07% 4	4,96% 2	4,77% 16	10,25% 38	8,83% 18	11,07% 37	17,64% 98	13,98% 158	41,04% 759	41,99%2.222
33	37,65%3.404	0,00% 0	0,00% 0	5,77% 2	9,07% 4	4,96% 2	4,77% 16	10,76% 40	9,78% 20	11,17% 39	17,64% 98	14,42% 164	41,40% 768	42,46%2.251
34	37,88%3.433	0,00% 0	0,00% 0	5,77% 2	9,07% 4	4,96% 2	5,26% 18	10,76% 40	9,78% 20	11,66% 41	17,76% 99	14,59% 167	41,62% 773	42,72%2.267
35	38,05%3.462	0,00% 0	0,00% 0	5,77% 2	9,07% 4	4,96% 2	6,11% 21	10,99% 41	9,78% 20	11,82% 42	18,15% 104	14,98% 172	41,73% 776	42,85%2.278
36	38,17%3.478	0,00% 0	0,00% 0	5,77% 2	9,07% 4	7,02% 3	6,11% 21	10,99% 41	9,78% 20	11,82% 42	18,15% 104	15,21% 175	41,86% 779	42,96%2.287
37	38,28%3.495	0,00% 0	0,00% 0	5,77% 2	9,07% 4	7,02% 3	6,11% 21	11,21% 42	9,78% 20	12,01% 43	18,15% 104	15,31% 177	41,97% 783	43,09%2.296
38	38,43%3.506	0,00% 0	0,00% 0	5,77% 2	9,07% 4	7,02% 3	6,11% 21	11,21% 42	9,78% 20	12,01% 43	18,24% 105	15,31% 177	42,41% 787	43,18%2.302
39	38,54%3.518	0,00% 0	0,00% 0	5,77% 2	9,07% 4	7,02% 3	6,11% 21	11,21% 42	9,78% 20	12,01% 43	18,24% 105	15,31% 177	42,55% 791	43,31%2.310
40	38,59%3.524	0,00% 0	0,00% 0	5,77% 2	9,07% 4	7,02% 3	6,11% 21	11,21% 42	9,78% 20	12,01% 43	18,24% 105	15,40% 179	42,60% 792	43,35%2.313
41	38,67%3.532	0,00% 0	0,00% 0	5,77% 2	9,07% 4	7,02% 3	6,11% 21	11,21% 42	9,78% 20	12,13% 44	18,24% 105	15,40% 179	42,64% 793	43,46%2.319

# HIPOCAT 11 Fondo de Titulización de Activos

## Cartera de Activos Titulizados / Portfolio of Securitised Assets

**Análisis de morosidad:** Tasa de entrada acumulada en mora +3 meses (trimestres naturales desde constitución Fondo) - Detalle por años originación activos

**Delinquency analysis:** 3+ months cumulative delinquency rate (calendar quarters after the Fund is established) - Detailed by asset origination years

**Activos / Assets:** Préstamos hipotecarios vivienda (CTHs) / Residential mortgage loans (PTCs)

**Fecha / Date:** 28/02/2025

**Divisa / Currency:** EUR

Esta serie histórica calculada a esta fecha puede diferir de las series históricas calculadas con anterioridad a consecuencia de cobros o actualización de información de los activos titulizados comunicados o modificados por el Administrador correspondiente con posterioridad a sus fechas de efectividad / This historical series calculated as at today's date may differ from previously calculated historical series following collections or information update of the securitised assets communicated or modified by the relevant Servicer after their effective dates

	Total	1994	1995	1996	1997	1998	1999	2000	2001	2002	2003	2004	2005	2006
42	38,72%3.539	0,00% 0	0,00% 0	5,77% 2	9,07% 4	7,02% 3	6,11% 21	11,21% 42	9,78% 20	12,13% 44	18,24% 105	15,45% 180	42,75% 796	43,50%2.322
43	38,76%3.544	0,00% 0	0,00% 0	5,77% 2	9,07% 4	7,02% 3	6,11% 21	11,21% 42	9,78% 20	12,13% 44	18,24% 105	15,52% 181	42,86% 798	43,52%2.324
44	38,80%3.548	0,00% 0	0,00% 0	5,77% 2	9,07% 4	7,02% 3	6,11% 21	11,21% 42	9,78% 20	12,13% 44	18,33% 106	15,52% 181	42,86% 798	43,58%2.327
45	38,83%3.555	0,00% 0	0,00% 0	5,77% 2	9,07% 4	7,02% 3	6,11% 21	11,21% 42	9,78% 20	12,13% 44	18,33% 107	15,56% 182	42,89% 800	43,62%2.330
46	38,84%3.556	0,00% 0	0,00% 0	5,77% 2	9,07% 4	7,02% 3	6,11% 21	11,21% 42	9,78% 20	12,13% 44	18,33% 107	15,56% 182	42,89% 800	43,62%2.331
47	38,85%3.559	0,00% 0	0,00% 0	5,77% 2	9,07% 4	7,02% 3	6,11% 21	11,21% 42	9,78% 20	12,13% 44	18,33% 107	15,56% 182	42,89% 801	43,65%2.333
48	38,87%3.563	0,00% 0	0,00% 0	5,77% 2	9,07% 4	7,02% 3	6,27% 22	11,21% 42	9,78% 20	12,13% 44	18,33% 107	15,67% 183	42,92% 802	43,65%2.334
49	38,92%3.569	0,00% 0	0,00% 0	5,77% 2	9,07% 4	7,02% 3	6,27% 22	11,21% 42	9,78% 20	12,13% 44	18,33% 107	15,67% 183	42,93% 803	43,72%2.339
50	38,93%3.572	0,00% 0	0,00% 0	5,77% 2	9,07% 4	7,02% 3	6,27% 22	11,21% 42	9,78% 20	12,13% 44	18,33% 107	15,72% 184	42,93% 803	43,73%2.341
51	38,97%3.576	0,00% 0	0,00% 0	5,77% 2	9,07% 4	7,02% 3	6,27% 22	11,21% 42	9,78% 20	12,13% 44	18,44% 108	15,72% 184	42,93% 803	43,79%2.344
52	38,99%3.579	0,00% 0	0,00% 0	5,77% 2	9,07% 4	7,02% 3	6,27% 22	11,21% 42	9,78% 20	12,13% 44	18,44% 108	15,72% 184	43,02% 805	43,80%2.345
53	39,00%3.580	0,00% 0	0,00% 0	5,77% 2	9,07% 4	7,02% 3	6,27% 22	11,21% 42	9,78% 20	12,13% 44	18,44% 108	15,75% 185	43,02% 805	43,80%2.345
54	39,03%3.585	0,00% 0	0,00% 0	5,77% 2	9,07% 4	7,02% 3	6,27% 23	11,21% 42	9,78% 20	12,13% 44	18,44% 108	15,85% 186	43,02% 805	43,84%2.348
55	39,12%3.596	0,00% 0	0,00% 0	5,77% 2	9,07% 4	7,02% 3	6,27% 23	11,21% 42	9,78% 20	12,13% 44	18,49% 109	15,90% 187	43,14% 808	43,94%2.354
56	39,14%3.598	0,00% 0	0,00% 0	5,77% 2	9,07% 4	7,02% 3	6,27% 23	11,21% 42	9,78% 20	12,13% 44	18,49% 109	15,92% 188	43,14% 808	43,96%2.355
57	39,14%3.598	0,00% 0	0,00% 0	5,77% 2	9,07% 4	7,02% 3	6,27% 23	11,21% 42	9,78% 20	12,13% 44	18,49% 109	15,92% 188	43,14% 808	43,96%2.355
58	39,18%3.603	0,00% 0	0,00% 0	5,77% 2	9,07% 4	7,02% 3	6,27% 23	11,21% 42	9,78% 20	12,27% 45	18,49% 109	15,92% 188	43,14% 808	44,02%2.359
59	39,20%3.607	0,00% 0	0,00% 0	5,77% 2	9,07% 4	7,02% 3	6,27% 23	11,21% 42	9,78% 20	12,27% 45	18,49% 109	15,92% 188	43,14% 808	44,05%2.363
60	39,22%3.609	0,00% 0	0,00% 0	5,77% 2	9,07% 4	7,02% 3	6,27% 23	11,21% 42	9,78% 20	12,27% 45	18,49% 109	15,92% 188	43,14% 808	44,08%2.365
61	39,22%3.609	0,00% 0	0,00% 0	5,77% 2	9,07% 4	7,02% 3	6,27% 23	11,21% 42	9,78% 20	12,27% 45	18,49% 109	15,92% 188	43,14% 808	44,08%2.365
62	39,23%3.610	0,00% 0	0,00% 0	5,77% 2	9,07% 4	7,02% 3	6,27% 23	11,21% 42	9,78% 20	12,27% 45	18,49% 109	15,92% 188	43,14% 808	44,09%2.366
63	39,24%3.612	0,00% 0	0,00% 0	5,77% 2	9,07% 4	7,02% 3	6,27% 23	11,21% 42	9,78% 20	12,27% 45	18,49% 109	15,92% 188	43,14% 808	44,11%2.368
64	39,24%3.613	0,00% 0	0,00% 0	5,77% 2	9,07% 4	7,02% 3	6,27% 23	11,21% 42	9,78% 20	12,27% 45	18,54% 110	15,92% 188	43,14% 808	44,11%2.368

## HIPOCAT 11 Fondo de Titulización de Activos

### Cartera de Activos Titulizados / Portfolio of Securitised Assets

**Análisis de morosidad:** Tasa de entrada acumulada en mora +3 meses (trimestres naturales desde constitución Fondo) - Detalle por años originación activos

**Delinquency analysis:** 3+ months cumulative delinquency rate (calendar quarters after the Fund is established) - Detailed by asset origination years

**Activos / Assets:** Préstamos hipotecarios vivienda (CTHs) / Residential mortgage loans (PTCs)

**Fecha / Date:** 28/02/2025

**Divisa / Currency:** EUR

Esta serie histórica calculada a esta fecha puede diferir de las series históricas calculadas con anterioridad a consecuencia de cobros o actualización de información de los activos titulizados comunicados o modificados por el Administrador correspondiente con posterioridad a sus fechas de efectividad / This historical series calculated as at today's date may differ from previously calculated historical series following collections or information update of the securitised assets communicated or modified by the relevant Servicer after their effective dates

	Total	1994	1995	1996	1997	1998	1999	2000	2001	2002	2003	2004	2005	2006
65	39,25%3.614	0,00% 0	0,00% 0	5,77% 2	9,07% 4	7,02% 3	6,27% 23	11,21% 42	9,78% 20	12,27% 45	18,54% 110	15,92% 188	43,14% 808	44,12%2.369
66	39,26%3.617	0,00% 0	0,00% 0	5,77% 2	9,07% 4	7,02% 3	6,27% 23	11,21% 42	9,78% 20	12,27% 45	18,54% 110	15,92% 188	43,14% 808	44,15%2.372
67	39,28%3.621	0,00% 0	0,00% 0	5,77% 2	9,07% 4	7,02% 3	6,27% 23	11,21% 42	9,78% 20	12,27% 45	18,54% 110	15,92% 188	43,17% 809	44,17%2.375
68	39,28%3.623	0,00% 0	0,00% 0	5,77% 2	9,07% 4	7,02% 3	6,27% 23	11,21% 42	9,78% 20	12,27% 45	18,61% 111	15,92% 188	43,18% 810	44,17%2.375
69	39,28%3.623	0,00% 0	0,00% 0	5,77% 2	9,07% 4	7,02% 3	6,27% 23	11,21% 42	9,78% 20	12,27% 45	18,61% 111	15,92% 188	43,18% 810	44,17%2.375
70	39,29%3.624	0,00% 0	0,00% 0	5,77% 2	9,07% 4	7,02% 3	6,27% 23	11,21% 42	9,78% 20	12,27% 45	18,61% 111	15,92% 188	43,18% 810	44,17%2.376
71	39,29%3.625	0,00% 0	0,00% 0	5,77% 2	9,07% 4	7,02% 3	6,27% 23	11,21% 42	9,78% 20	12,27% 45	18,61% 111	15,92% 188	43,18% 810	44,18%2.377
72	39,30%3.627	0,00% 0	0,00% 0	5,77% 2	9,07% 4	7,02% 3	6,27% 23	11,21% 42	9,78% 20	12,27% 45	18,61% 111	15,92% 188	43,23% 812	44,18%2.377
73	39,31%3.628	0,00% 0	0,00% 0	5,77% 2	9,07% 4	7,02% 3	6,27% 23	11,21% 42	9,78% 20	12,27% 45	18,61% 111	15,95% 189	43,23% 812	44,18%2.377